

# WETHERINGSETT-CUM-BROCKFORD



*digital*

## NEWSLETTER

**July 2020**

Inside this month ....

- ◇ Competition to design Village Hall sign
  - ◇ News on the Neighbourhood Plan
  - ◇ Libraries re-opening
  - ◇ Mobile Library resumes service
  - ◇ Children's Summer Reading Challenge
  - ◇ History of the Village Hall
  - ◇ Parish Council meeting report
- and much more,

## USEFUL CONTACTS

VILLAGE HALL BOOKINGS ~ Sue Stannard	01449 767752
CHURCH WARDENS ~ Ken Goudy	01449 673648
~ Michael Churchill	01449 768869
Wetheringsett VC Primary School	01449 766215
Headteacher ~ Mrs Hookway	Chair of Governors ~ Jo Pitt
PARISH TREE WARDEN ~ Elizabeth Aldred	01728 860482
TOWNLANDS TRUST~	
PARISH FOOTPATH WARDEN ~ Elizabeth Aldred	01728 860482
RSPCA Suffolk East & Ipswich branch~ Ian Hendry	01449 767747
NON-EMERGENCY POLICE Reporting, Information or Enquiries	101
MENDLESHAM HEALTH CENTRE	01449 767722

**Editor contact: Cally Buch 01449 766417**

**wetheringsettnews@gmail.com**

***Deadline for copy 15th of every month.***

**Typed announcements by email only. pdf or word doc. preferably please.**

**HALF PAGE ADVERTS SHOULD BE IN LANDSCAPE FORMAT**

**Any contributions from the village community are welcomed.**

**The newsletter is for the community and serves to inform and give news and the occasional interesting fact or two. Editor reserves the right to amend pieces due to space restrictions. If pieces for inclusion are not formatted, Editor reserves the right to amend as best fits the edition. Views expressed within are not necessarily those of the editor and contributions are made from various sources.**

***Invoice / advert queries please contact Clare Rogers 01728 861382***

***Distribution is organised by Eddie and Sue Payne 01449 767794***

## Welcome to the July 2020 issue of your newsletter



I hope everyone is managing to keep well and has been able to enjoy the wonderful weather we have experienced this past month.

Many businesses are able to open again and I expect—with so many people needing a haircut— hairdressers could work round the clock if they were able! In the newsletter this month - a competition to design a new sign for our Village hall; some more snippets from the Village History, as well as our usual monthly updates, and much more. Also the good news that the libraries will be opening and the Library van will be with us again every 4th Thursday starting on July 30th.

This month and probably next month, August, the newsletter (as with the past 2 issues), will only be available on the Village web-site <http://wetheringsettcumbrockford.onesuffolk.net/>

After that we are hoping to print the newsletter and resume door-to-door delivery. I should be able to let you know next month.

Stay safe everyone

Cally (Editor)



Debenham, Eye, Stradbroke,  
Occold, Laxfield ...and every  
other village in between.  
[info@highsuffolkrotary.org](mailto:info@highsuffolkrotary.org)

From Alan Cutting - Rotary Club of High Suffolk:-

*"It is with much sadness, but owing to declining membership, the remaining members have decided that The Rotary Club of High Suffolk be dissolved with effect from 30<sup>th</sup> June 2020.*

*Residual funds have been distributed to charities previously supported by the Club and physical assets have been given to other Clubs in the district".*

Alan extends his thanks to all those who have supported the club over the years and helped to raise so much for the many charities the club supported.



# Happy 72nd Birthday



On 5 July 2020, it will be 72 years since the NHS and social care system was established.

2020 has been the most challenging year in NHS history. This year, the birthday is an opportunity to recognise, reflect and remember. To recognise the skills, commitment, achievements, compassion and diversity of all our 1.9 million people, across more than 350 different professions.

Over the last few months staff have worked around the clock to tackle coronavirus—caring for the 100,000 patients with COVID-19 who needed specialist hospital treatment and treating countless others besides, redesigning services and creating backup Nightingale hospitals.

None of this would have been possible without the help and support of countless individuals and organisations around the country.

Everyone across the NHS is hugely grateful to the thousands of former doctors, nurses and other health service staff who came out of retirement to battle coronavirus, the fellow key workers – from bus drivers and refuse collectors to social care staff and teachers – who kept the country running and, of course, all those who stopped the spread of the virus by following the expert advice and staying home to save lives. Everyone has had a part to play and, in the most difficult days, frontline workers were sustained by the support of the public.

On Sunday 5 July we invite [everyone to come together at 5pm](#) to come together and applaud the commitment, courage and sacrifice shown by so many. .

Lockdown has been a tremendously challenging time for everyone, but at the same time we have seen countless examples of people doing their best and achieving amazing things – fundraising, volunteering, returning to NHS careers, helping out neighbours, being more active, and a greater willingness to talk about and address mental health issues.

We are asking people to carry on supporting the NHS and social care by continuing or embracing one or more of these positive changes to [Live well](#), [Work well](#) and [Care well](#). Be proud of what you are doing and share your story, or commitment, to inspire and motivate others.

**Boots  
n  
Blades**

## **GARDEN MACHINERY SERVICE & REPAIRS.**

**\*SPRING INTO ACTION IN YOUR GARDEN\***

**WE NOW HIRE GARDEN MACHINERY OUT FOR THOSE ONE OFF JOBS.**

**ROTOVATOR, SCARIFIER, POST HOLE BORER AND LOTS MORE**

**Open Mon - Fri 9am-4pm, Sat 9am - 12pm**

**Closed Sundays and Bank Holidays**

**6A MEADOW WORKS BUSINESS PARK, DEBENHAM. IP14 6RP. TEL 01728 860330 EMAIL [karen@bootsnblades.co.uk](mailto:karen@bootsnblades.co.uk)**

**FOLLOW US ON TWITTER @BOOTSNBLADES AND FACEBOOK BOOTSNBLADES DEBENHAM**

**D.I. ALSTON LTD THE CEDARS BROCKFORD**

**20ft Containers for self storage:  
£100/month inc VAT**

**We can also store your caravan on hardstanding.**

**Enquiries: 07788 974169**

**TO LET:**

**OFFICES AND WORKSHOPS ALSO  
HOLIDAY ACCOMMODATION  
AT BROCKFORD RAILWAY SIDING**

**Tel: 01449 766231**

**[tonyalston@hotmail.com](mailto:tonyalston@hotmail.com)**

Your Village Hall



**COMPETITION!**

Needs You!

## **To design a sign**

*Our beautifully refurbished Hall is in need of new signage and so the Village Hall Committee is running a competition for a new sign.*

*The sign will be placed on the main wall as you approach the entrance of the Hall, in this, its centenary year.*

*The competition ends in September - so get designing now!*

*More details in next month's newsletter about where to send your design, etc*

# Creative Silk Painting

Book yourself on a day course to learn the Art of Creative Silk Scarf Painting

No experience necessary & beginners are very welcome.

Booking is essential These are small workshops allow for individual tuition, Based in Pages Green.

Workshop Days are 10am-3pm, cost £45

*Be Inspired, Get Creative, Have Fun*

Various dates available, Please see website for dates or call Ruth ...

Call to book your place...  
01728 861899

[theartysilkworm.co.uk](http://theartysilkworm.co.uk)

DIGITAL

**copycentre**

For All Your Copying



1992 - 2017

**Digital Laser Colour Copies**  
**Plan Prints to A0 size**  
**Booklet - Magazine Printing**  
**Laminating to A2 size**

**We print from E-mail, CD**  
**Memory stick, or hard copy**

**EXCELLENT RANGE OF**  
**COLOURED PAPER AND CARD**  
**DOCUMENT COMB BINDING**

Email: [info@digitalcopycentre.co.uk](mailto:info@digitalcopycentre.co.uk)

37 Stowupland Street, Stowmarket, IP14 1EG

**01449 678100**

## RUST IN TIME

Lovingly created in steel that will  
"Rust in time" for many years throughout the  
changing seasons



FACEBOOK  
[@rustintimesuffolk](https://www.facebook.com/rustintimesuffolk)

EBAY  
seller:[rustintimesuffolk](https://www.ebay.com/str/rustintimesuffolk)

WEBSITE  
[www.rustintime.com](http://www.rustintime.com)

# *Snippets from the Village History*

## *The Village Hall* written by Katie Goudy

The opening ceremony took place on Easter Monday, March 28th 1921 with a first class entertainment. The many items on the programme included the REDS AND WHITES - a party of eleven local young men entertained the company with songs and topical humour, making a smart appearance in dress suits with red and white facings and buttons. Later that same year it was decided to put an extension onto the hall (presumably that was when the kitchen was added). At a cost of £150. As the months went on the repair of the roof came in for discussion, and Mr Clarke estimated that the cost of covering the roof with corrugated iron with felt underneath would be £25.

Heating at that time was by three Valor Perfection Stoves.

In 1926 it was proposed that a gent's cloakroom be added to the Hall building, 'and it was decided that a room 14ft x 8ft would be built onto the Hall on the north east side and another to communicate directly into the hall'. A boarded floor was suggested.

In 1927 the making up of a path from the gate to the door was discussed and Mr Woodward was asked to make enquiries about broken bricks, etc, from the railway.

Towards the end of 1927 the Head Teacher of the school (Mr R F Howe) was asked for permission to use the Hall an hour weekly for the purpose of children's physical exercises. Apparently considerable discussion took place, and eventually it was proposed and seconded that the use of the Hall be granted to SELECTED children for 2 half hours a week, and the school managers to be asked to pay £2 for the privilege!!

In 1930 it was proposed that a charge of 3/- (15 pence in decimal) be made for the use of the Hall for a length of 3½ hours and 5/- for a Dance.

The Hall committee also purchased 4 dozen cups and saucers and 12 dozen plates for 30/- (£1.50) from the Rector (Rev. FR Smith), who was at the time retiring.

As the Hall was now being used a great deal it was decided to raise the caretaker's money to 7/6 for the winter 6 months and 3/- a week for the summer.

*More next month on the history of the Village Hall*



## **Taylormade Kitchens**

Kitchens - Bedrooms - Bathrooms  
Designs from traditional to ultra modern.

*Any finish including hand painted, satin lacquered or high gloss.  
Bespoke units made to any size, birch plywood carcasses optional.  
Choice of Granite, Quartz, Timber, Solid Surface or Laminate  
worktops.*

*Most makes of appliances - sinks - taps supplied at competitive prices.  
Large range of Bathroom suites, showers, enclosures & brassware.  
Professional meticulous Installations. ~ Supply only if required.*

**Please contact Neil Taylor on  
Tel: 01728 860856 ~ Mobile: 07860 602317**

## *Vince Plumbing and Heating*

Gas Boilers and Heating, Bathrooms, Kitchens,  
and Plumbing.

**Justin Vince**

07585081787

vinceplumbingandheating@gmail.com



# Mendlesham Medical Group

Tel: 01449 767722

Email: [IESCCG.mendlesham@nhs.net](mailto:IESCCG.mendlesham@nhs.net)

## LEAVING ANNOUNCEMENT

### Dr Jon Herman



Sadly we need to announce that Dr Jon Herman will be leaving the Practice this summer after 25 years in the role. He won't be hanging his stethoscope up all together but will be branching out into other aspects of Primary Care.

We would like to confirm that all Dr Herman patients will continue to receive the high standard of patient care that Mendlesham Medical Group gives to all its patients.

It goes without saying that Dr Herman will be missed greatly by staff and patients' alike. We would like to wish him all the best for his future career. Dr Julia Ford whom most of you know will be replacing Dr Herman's position within the Partnership alongside Dr Raj Tanna and Dr Sarah Evans this summer.

**Please check our website for further news and updates – thank you.**  
<https://mendleshamhealthcentre.co.uk/>

### **Information on the website includes:**

**“All our face-to-face appointments will be scheduled at Mendlesham Surgery where we have adequate facilities and staff support.**

**We have altered our online appointment booking system to ‘Telephone Consultations’ only.**

If you feel you need to be seen please call Mendlesham Surgery on 01449 767722. Your call will be dealt with by a care navigator and then triaged by a healthcare professional.

# Friends of Debenham Library

**Debenham Library will open with a limited number of services from Tuesday 7 July. Mobile libraries will also restart from Monday 6 July. The home library service remains suspended**

There will be no reservations, browsing or use of computers

Customers will be able to email or phone for a selection of titles for collection at a pre-arranged date. We will take e-mails to [debenham.library@suffolklibraries.co.uk](mailto:debenham.library@suffolklibraries.co.uk) from Monday 29th June for pre-orders for "Select and Collect", to be collected from Tuesday July 7th and orders can be placed by phone to the library 01728 861940 during opening hours from that date.

All DVD and CD loans will be free

You can use the Advanced Search at [www.suffolk.spydus.co.uk](http://www.suffolk.spydus.co.uk) to check which titles are available at Debenham. Under "location" in a drop-down box, choose Debenham.

For more details see [www.suffolklibraries.co.uk/coronavirus](http://www.suffolklibraries.co.uk/coronavirus)

When you have finished with your books, please put them in our black bin outside the library. All items have been renewed automatically until August.

Meanwhile you can still use all our online services for free audio-books, ebooks, films and other services. Use your library card at [www.suffolklibraries.co.uk](http://www.suffolklibraries.co.uk) for more details.

**Join our film mailing list** (email [tony@tonyhutt.co.uk](mailto:tony@tonyhutt.co.uk)) so you don't miss out in future! We can't show films, but meanwhile details are being circulated of various free films you can watch at home.

School Corner, Debenham IP14 6PL

Tel: 01728 861940

Facebook: @DebenhamLibraryFriends





## Friends of Debenham Library Summer Reading Challenge 2020

This year the Summer Reading Challenge, children aged 4 to 11, will be organised online. You will need to register at [www.sillysquad.org.uk](http://www.sillysquad.org.uk). Books can be borrowed from the library (see above), or you can use eBooks or audiobooks.

School corner, Debenham IP14 6PL (next to the Primary School). Opening hours:

Tuesday: 0930 am – 1300 pm

Wednesday : 1500 am – 1930 pm

Saturday: 0900 am – 1300 pm

Sunday: 1200 am – 1600 pm

### Ipswich Mobile Library Route 7

**Coronavirus update:  
The mobile library service resumes from 6th July  
The Home Library Service remains suspended until further notice.**

#### **Thursday 30th July**

Brockford Street	Old Griffin	1245–1300
Wetheringsett	Hockey Hill	1405–1420
Wetheringsett	Wetherup Street	1430–1445
Wetheringsett	Park Green	1450–1505

This was correct at time of going to print - please check for up to date information on:-

<https://www.suffolklibraries.co.uk/mobiles-home/>



Do you need help  
with Babysitting or  
Ironing?

My name is Georgie

I'm a Year 10 student and I am  
looking for work.

If you need any  
ironing done or  
babysitting, please  
give me a call or  
text me on

07920 104 217

You can also email

[georgiebullock12345@gmail.com](mailto:georgiebullock12345@gmail.com)



*Gill Nicholls*  
*A singer*  
*for your special occasion*

Gill sings all time favourites from all  
decades, especially the '30s, '40s and '50s.  
She also performs Old Tyme Music Hall in  
costume and can sing a  
song or songs chosen  
by you for that  
special occasion.

All enquiries  
most welcome,  
call Gill on  
01449 781375 or  
07505227606



Email: [gnicholls3@aol.com](mailto:gnicholls3@aol.com)  
[www.gillnicholls.co.uk](http://www.gillnicholls.co.uk)

***Michael Brame,***

**60 Pretyman Avenue, Bacton, IP 14 4NY**

**“A” rated UPVC windows, doors and conservato-  
ries with ‘A’ rated installation ‘C’ rated prices**

**Complete replacement of fascias, soffits, gutter-  
ing and downpipes**

***Needing quotes for any of the above?***

**Contact Michael on**

**01449 781533 mob. 07931 784470**



# Suffolk Sweep

## Chimney Sweeping Services



As a member of the Guild of Master Chimney Sweeps I am committed to providing a professional service, ensuring your chimney is kept clean and your home safe.

My services include:

**The sweeping of open fires, all solid fuel appliances, gas and oil boiler flues.**

**Safety inspections and smoke testing.**

**Carbon monoxide and smoke alarms supplied and fitted.**

**Insurance company recognised certificates issued.**

**Fully insured**

The safety of your home is paramount and all services are carried out in strict accordance with current regulations and approved sweeping methods.

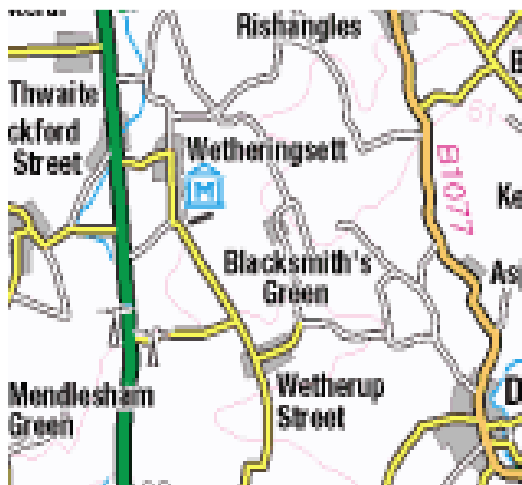
**Telephone John on 01449 737513**

**or text SWEEP to 07858768162**

## Update on our Village Neighbourhood Plan

Further to the update in last month's issue, Melanie would like to encourage everyone in the village to have a voice in the development of the plan, and says -

'We are always keen to hear from residents who would like to help the existing Neighbourhood Plan team'. (Contact details below).



We are currently applying for grant funding so that the parish can employ a planning consultant.

We are also in the process of applying for designation with Mid Suffolk District Council.

When we have funding and designation, we can begin the next two stages of making the plan

1. Researching the area
2. Creating another comprehensive consultation with all businesses, stakeholders and households in Wetheringsett-cum-Brockford



Please email the neighbourhood plan working group at [plan@wetheringsett.com](mailto:plan@wetheringsett.com), or contact the Parish Council if you would like to help with this work.

You can keep in touch with progress as we complete each stage of the process.

Go to the website: [plan.wetheringsett.com](http://plan.wetheringsett.com)

# Bishop & Miller

AUCTIONEERS VALUERS

## Suffolk's International Auctioneer

With over 40 specialist auctions throughout the year such as antiques, paintings, vinyl, jewellery & watches, furniture, ceramics, toys, advertising & automobilia, coins & military and so much more.

We hold regular valuation events around the East of England and also a weekly walk in Friday valuation event at our saleroom in Stowmarket, see our website for all dates.

If you can't make a valuation event you can contact the team to arrange to pop in and see us or for a free home visit.



[www.bishopandmillerauctions.co.uk](http://www.bishopandmillerauctions.co.uk)

19 Charles Industrial Estate, Stowmarket, IP14 5AH



01449 673088 enquiries@bm-auctions.co.uk



# Rosedale FUNERAL HOME

The Rosedale  
Funeral Plan  
enables you  
to select and  
pay for the  
arrangements  
of your choice  
at today's  
prices.



A family  
business  
- we believe  
it makes a  
difference

BEREAVEMENT  
SUPPORT GROUP

\*\*\*

ADVICE ON  
FUNERAL GRANTS



Rosedale House  
63 Victoria Rd  
Diss

24hr Tel:  
**01379  
640810**

# Optimal Heating

Father & Son Team  
with over 30 years experience

Specialist Heating Engineers  
Oil, Natural Gas & LPG Servicing and Repairs



Tel: 01728 628687

Mobile: 07806 660399



## Providing Personal Care in your own Home



Recruiting  
NOW!  
We need  
exceptional  
people who  
love to  
care

## Do you need help with:

Personal Care  
Dementia Care  
Respite Care  
Help Around the  
House  
Day Trips Special  
Occasions

Request a  
Brochure or book  
an appointment  
on 01449 763086  
or 01284 711845



*We only employ people who love to care.*

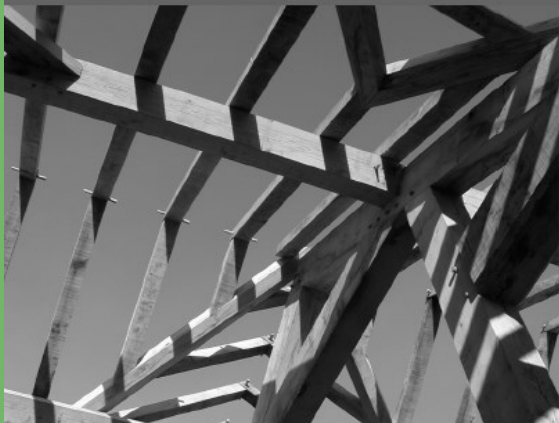
 **MyCare**  
at Home

Supporting Independent Living

[www.mycare-at-home.co.uk](http://www.mycare-at-home.co.uk)

# Traditional Oak Carpentry

Conservation and Construction



New Homes  
Extensions  
Garden Frames  
Structural Repairs  
Historic Reports  
Design Service

[www.traditionaloakcarpentry.co.uk](http://www.traditionaloakcarpentry.co.uk)

01449 768817



## Take the right direction with expert financial advice

I provide a comprehensive wealth management service, offering specialist face-to-face advice tailored to you. My services include:

- Investment Planning
- Retirement Planning
- Inheritance Tax Planning
- Intergenerational Planning

For further details please contact:



Amanda Dossett

T: 01449 768768 | M: 07808 549876  
E: [amanda.dossett@sjpp.co.uk](mailto:amanda.dossett@sjpp.co.uk)  
W: [www.amandadossett.co.uk](http://www.amandadossett.co.uk)

# **Wetheringsett cum Brockford Parish Council**

## **Report on the video meeting held**

### **Monday 1st June 2020**

**Footpaths** – parish councillors were very pleased to hear that the village footpaths and public rights of way have been well used by parishioners during the lockdown but there have been reports of several incidents of dog fouling not being cleared up and also cycling on footpaths. It would be much appreciated if dog fouling could please be removed and that residents are aware that cycling is not allowed on footpaths. Our councillors thank you for your co-operation with these matters.

**Trees** – Cllr Mrs Aldred reported the Suffolk Tree Warden network had warned of the spread of a caterpillar that attacks oak trees. The caterpillar can in some instances strip the tree of its leaves leaving it vulnerable and weakened. This has caused a problem in the south of England and appears to be spreading further afield. Young trees can be protected but there is little that can be done to protect a mature oak but in the majority of cases the leaves will regrow the following year.

**Village Hall** – the parish council has assisted with the cost of some maintenance items in the village hall which has transformed the hall in readiness for its re-opening after lockdown. The wooden floor has received a complete overhaul, interior walls and windows have been redecorated with some remedial plasterwork and new lighting installed. It is hoped the new look will attract increased bookings when the hall re-opens.

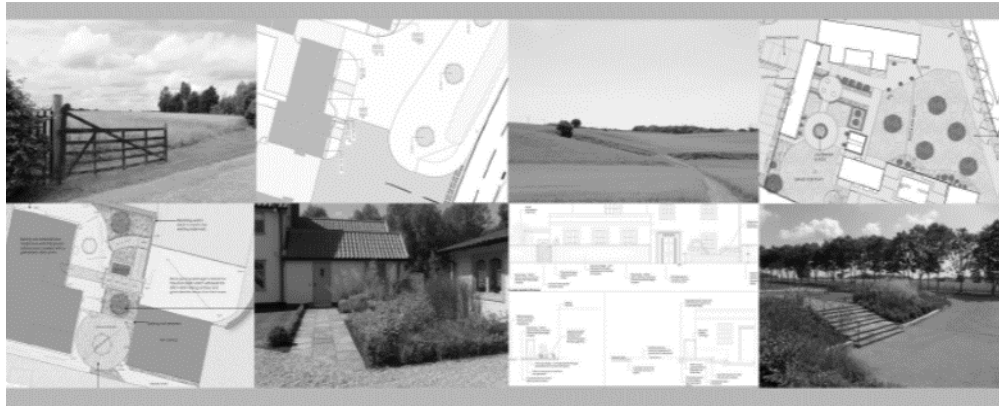
**Cemetery grass cutting** – Cllr Lacey reported on the first grass cut in the cemetery which was now looking very good. The grass will be cut on the same basis as last year – four grass cuts and some strimming over the growing season. The parish council received compliments from parishioners last year on the improvements made.

**Parish Council meetings** – the Council continues to hold its monthly meeting via video link during lockdown and closure of the village hall. Parishioners may observe or take part in the meeting during the public session via the Teams Microsoft app.

Link published on the parish council agenda posted on the parish notice boards and website.

**Next meeting – Monday 6 July 2020, 7pm via Micro Soft Teams.**

It would be appreciated if parishioners could email any queries they wish to raise to the Chairman or Clerk prior to the meeting. Please include your name and address in any communication.



- \* Release of landscape planning conditions
- \* Landscape design
- \* Landscape and visual impact assessment
- \* Design and access statements
- \* Tree surveys
- \* Supporting statements

W. [www.kirstenbowden.co.uk](http://www.kirstenbowden.co.uk)

T: 07790 907241

E: [kirsten.bowden@hotmail.co.uk](mailto:kirsten.bowden@hotmail.co.uk)

**Kirsten Bowden**  
 CHARTERED LANDSCAPE ARCHITECT

A Chartered member of the Landscape Institute with full professional and public liability insurance

*Debenham & District*  
**Need help with  
 your PC?**

**Friendly advice & training**

**Repairs & upgrades**

*No fix, no fee*

Windows – Web – Email

Microsoft Word & Excel expert

Home network – WiFi – TV links

***At your Home or Business***

Phone Chris on

0757 069 5279

*email: [info@ubestree.co.uk](mailto:info@ubestree.co.uk)*

*[www.ubestree.co.uk](http://www.ubestree.co.uk)*

**Domestic Appliance Repairs**



**For local, reliable service please call**

**Alan:**

**01449 613457**

**or 07508 051 518**

**WASHING MACHINE    DISHWASHER  
 OVEN    HOB    TUMBLE DRYER**



# **BEV & KIRSTY**

**FORMERLEY CURL UP & DYE**

**WE ARE BOTH FULLY QUALIFIED WITH OVER 40 YEARS  
OF EXPERIENCE BETWEEN US**

**PROFESSIONAL ADVICE AND PERSONAL ATTENTION**

**IN ALL ASPECTS OF HAIRDRESSING**

**PERMS: COLOURS: HI-LITES: CASUAL PUT-UPS WEDDING HAIR: RESTYLES Etc**

**FOR ALL THE FAMILY AT UNBEATABLE PRICES**

**SENIOR CITIZEN RATES TUESDAY ONLY**

**EAR PIERCING AVAILABLE**

**EASY OFF ROAD PARKING**

**LOYALTY CARD, STAMP EVERY SERVICE**

**ALL DEBIT/CREDIT CARDS ACCEPTED**

**GIFT VOUCHERS AVAILABLE**

# TREES

I have been planting about 100 trees, shrubs, hedges since 'Plant a tree in '73.' Without much success in a dry year.

I have always wanted to play cricket for England, without much hope of reality, so I planted some cricket bat willows, in the hope that at least I was represented. The second batch were planted along the river between the Hall and the Manor. they died back and then shot from the base: no good for a bat willow. We did the job properly and planted a number of oaks as they would outlive the willows.

These willows now stand about 100ft tall and look fantastic from the 'council houses' - except the ones that have been blown into the Hall garden or onto Munter's field.

One of the consequences of the extraordinary weather we have had since 23 Sep '19, is that we have been able to tidy up these trees but also to manicure the several oaks that are amongst their giant brothers. These have been trimmed of their lower branches and, where possible, we have cut back the interfering willows, so that many years after I have passed on those walking along the adjacent will view some very fine oaks.

As you pass around our Parish, enjoy the trees. They are what the land owners have given to the countryside and very few are worth a pound; the best oak £100 perhaps.

Recently, we found a tree in danger of falling onto a building so obtained a quote to have it taken down. £900 to you Guvnor!

**AJA**

# Some Tree Funnies ...

How does a tree get on the internet?  
They log on!

What did the tree do when the bank closed?  
It opened its own branch!

If a tree falls in a wood and there is no-one there to Twitter it—does it make a sound?



What crime did the tree commit?  
Treason!

What's a tree's favourite subject at school?

Geometree!

What kind of tree is often found in a kitchen?

A pan-tree!

What did the tree say to the bully?  
Leafme alone!

What did the tree say to the chicken?  
I'll tell you if I make a sound when I fall and no-ones around, if you tell me why you crossed the road!

What do you get when you cross a pig with a pine tree?

A pork-u-pine!

Why don't you ever see hippos hiding in trees?

Because they're really good at it!


What do you get when you cross an apple with a Christmas tree?

A pine-apple!

**GEOFF NICHOLLS & CO**  
**SPECIALISTS IN**  
**PERIOD PROPERTY**  
**RESTORATION**

*renovation work, all repairs,  
 alterations, conversions,  
 roofing, decoration etc.*

*Quality work guaranteed*



**Bacton.**  
 (01449) 781375

**Complete Building Service**



**Cleaning  
 and  
 Gardening Services**

Friendly team who provide an excellent  
 cleaning and gardening service

Wetheringsett, Brockford, Mendlesham  
 and other IP14 areas

Kitchens

Bathrooms

Hoovering

Polishing

Holiday Let Change Over

End of Tenancy

Garden Maintenance

Mowing

Trimming



"Fast, efficient and thorough  
 - highly recommended"  
 The Cartledge A140



Please get in touch for availability  
 Email [karinathacker1@gmail.com](mailto:karinathacker1@gmail.com)  
 or  
 Phone 01449 767731

# GREEN MAN

**Forestry & Tree Care**

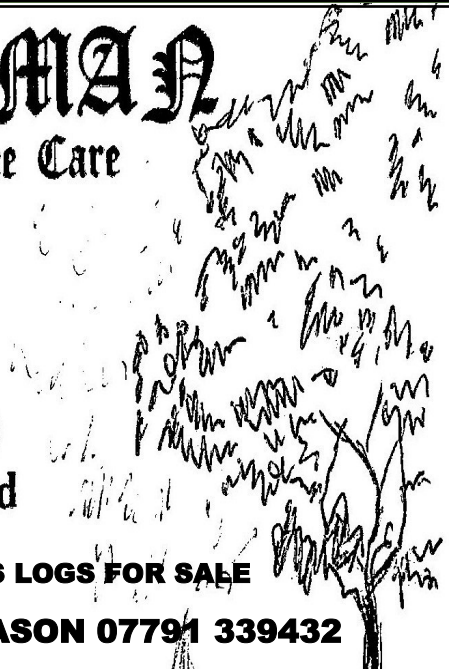
**Horse Logging**

**Tree & Hedge Maintenance**

**Health Report & Advice**

**Tree Felling (only as last resort)**

**NPTC qualified - fully insured**



**JASON HAS LOGS FOR SALE**

**Ring: JASON 07791 339432**



## The Cedars Pool - Keep Swimming!



Having checked that chlorinated pools are not a no-go area, the Cedars pool has been open for some weeks. With the warm weather, the water temperature has been between 85-95F, so just right for many... but not many have been to visit us! However, as the local Risk appears to be not too great, more people are swimming, not just children, who are supposed to be at less risk, but some older people who need the body exercise.

So, all welcome, but we have to say at your own risk!

We do not charge to swim, as we like to see the pool being used to useful effect. So please keep swimming: we do not like the warm water being idle!  
AJA Contact: [tonyalston@hotmail.com](mailto:tonyalston@hotmail.com)



Amanda  
Polley

# Swimming Lessons

Private one-to-one swimming lessons nr Wetheringsett

For all ages and abilities

30 min sessions

Available on weekday evenings and weekends

Experienced, STA Qualified, CRB checked and Insured

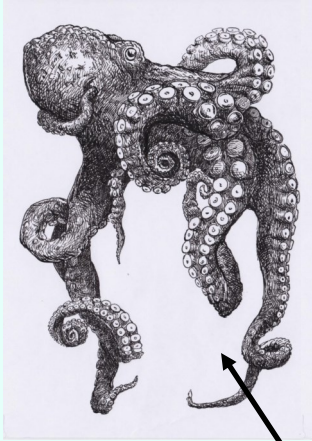
Call **07910 376 906** or

Email **[theswimteacher@yahoo.com](mailto:theswimteacher@yahoo.com)** for details

# FANTASTICAL CREATURES

Unfortunately we did not have any of your own  
Fantastical Creatures sent in.

We'll give it a last try .... Here is another Fantastical Creature.



## OCTOPUSSY

The question was asked ...'why  
is it called an Octopussy?' The  
answer is the outline of a cat  
can be seen under the creature.

Can you see it?

Would you like one of **your** drawings  
featured in the Newsletter?

Draw or paint a fantastical creature -  
photograph it and email it to

[wetheringsetnews@gmail.com](mailto:wetheringsetnews@gmail.com)



Can you think  
of a name for  
this creature?

# S.C. CLIFFORD

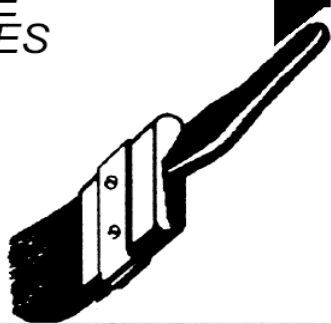
## PAINTER & DECORATOR

• INTERIOR/EXTERIOR • PRIVATE & COMMERCIAL

9 Stowmarket Road  
Stonham Aspal  
Stowmarket  
Suffolk IP14 6AB

FREE  
ESTIMATES

Tel: STOWMARKET (01449) 711369



# mymow

WITH ALL THE TRIMMINGS

**mowing, trimming, hedging, landscaping,  
digging...**

We are a local, reliable, family run grass cutting and garden maintenance company. We will provide you with an honest and reliable service and a perfectly cut lawn to enjoy all year round.

Visit our website to meet the mymow team and call us today for a free consultation and no obligation quote.

rob@mymow.co.uk  
www.mymow.co.uk  
07747037503

# South Hartismere Benefice

July 2020 Newsletter



## Cancelled Until Further Notice

Following government advice, church buildings have stayed closed during lockdown, and a message that pops up regularly on my mobile is CANCELLED UNTIL FURTHER NOTICE. This has been very difficult for us at a time when we have wanted to be there to support our communities.

However, **we have continued to be church** in a different way! So instead of thinking about what we can't do, we have focussed on what we **CAN** do: - praying for our communities and responding to prayer requests; pastoral care by phone and email; practical support – shopping, collecting medicines and donating financially to the foodbanks; 3 services a week; a Daily Reflection on Facebook and via email; worship materials for those who can't access online worship; funerals at the graveside or at the Crematorium; bereavement support; support for couples whose weddings are postponed; school governance and virtual Governors meetings; checking the church buildings regularly, and much more.

At the same time, we have lost a significant amount of income, but the running costs still have to be met, including electricity, insurance, testing of appliances, ongoing maintenance and repairs of the building and churchyard. When not in lockdown it also funds our ministry to schools, hospitals, Care Homes and home visiting, and enables weddings, baptisms, funerals and key events and services throughout the year, including Remembrance and Christmas. We receive no government funding and have to do a significant amount of fundraising to keep our heads above water, yet we would like to do more to serve the needs of the community rather than always trying to raise funds.

Cont.

## South Hartismere Benefice

*Continued:*

We would like our churches to be able to continue when lockdown ends! and some of them are coming very close to going into the red. We need our communities to get behind us if our churches are to continue to be a beacon of hope in each village.

With this in mind we are planning a **Grand Craft Fair and Exhibition: Life in Lockdown**, (hopefully during September) so could you support us by using lockdown to make or produce things that could be sold - **knitted, crocheted or sewn items; jams, chutneys or preserves, plants and garden produce; dried flower arrangements, natural craft items/Christmas table decorations; greetings cards, woodwork items etc.** and on the day **cakes/savouries and refreshments**. We would also love to receive paintings, artwork, poems or reflections and photos on the theme of lockdown. It will be good to have something to focus on and I am so looking forward to being out and about among you again! In the meantime – stay safe, look after yourselves, and be in touch if I can help in any way.

With love and prayers,

*Julia*

Are you feeling isolated and anxious because of the coronavirus?

We want to assure you that the church community remembers and prays for those who are in any kind of need.

Please call Julia on **01379 678064** or email **[rev.julialall@gmail.com](mailto:rev.julialall@gmail.com)**  
[if you would like prayer, conversation or practical support.](#)

South Hartismere Benefice is planning a  
*Grand Craft Fair and Exhibition*  
*“Life in Lockdown”*

Can you help with any of the following, please -



Also -

paintings, artwork, poems or reflections and photos on the theme of lockdown.

## SOUTH HARTISMERE BENEFICE

To our schools and families:

### Food, Fun and Family Friendly!

You will have heard that our usual services and activities in church are cancelled, and this includes Messy Church and our Café services.

However, you can still see me in school, and I will be leaving Messy church ideas at school.

We will put out a weekly email to families, and if you would like to access this, email me on [rev.julialall@gmail.com](mailto:rev.julialall@gmail.com)

**Follow us on Facebook:**

<https://www.facebook.com/groups/SouthHartismereChurches/>



ALL SAINTS

WETHERINGSETT-CUM-BROCKFORD

*Coffee Mornings Wednesdays*  
*Unfortunately these have been*

**cancelled**

*until further notice*


# Support during coronavirus

## Home, But Not Alone

Supporting vulnerable people in **Suffolk**

The Home, But Not Alone free phonenumber is for people who need **urgent** help and support during the Coronavirus pandemic. It is only for people who do not have support available from friends, family or neighbours and are struggling for food, medicines or other essential supplies.

## Coronavirus Emergency Phonenumber

 **0800 876 6926**

9am-5pm every day

For all other enquiries please visit: [www.suffolk.gov.uk/homebutnotalone](http://www.suffolk.gov.uk/homebutnotalone)

## Other useful contacts

- National domestic violence 24-hour helpline:

**0808 200 0247**

- Mental health helpline, called First Response, run by the Norfolk and Suffolk Foundation Trust:

**0808 196 3494**

- For any police matters please visit:

**[www.suffolk.police.uk](http://www.suffolk.police.uk)**





## Whatcha Doin', Dear?

If I was a dancer, darlin',  
I s'pose that I'd be dancin'.

If I was a painter, honey,  
I s'pose that I'd be paintin'.

If I was a singer, lovie,  
I s'pose that I'd be singin'.

But me, I'm just a writer,  
there's no s'posin', 'bout what I'm doin'!

J. Eleanor Bonet

### ADVERTISING RATES

for the Wetheringsett-Cum-Brockford Newsletter

A5 Full Page	11 Issues - £ 100.00	5 Issues - £ 50.00
A5 Half Page	11 Issues - £ 50.00	5 Issues - £ 25.00
A5 Quarter Page	11 Issues - £ 40.00	5 Issues - £ 20.00
Back cover	11 Issues - £ 150.00	5 Issues - £ 75.00

RING CLARE ROGERS ON 01728 861382

clarelouiserogers@btinternet.com

**WE WELCOME NEW ADVERTISERS**



## **MOT testing in Wetheringsett at MPA**

**All cars and light vans up to 3T  
Testing by appointment**

**Ring Michael to book your test**

**Tel: 01449 767070**

**Classic car restoration,  
service and repair.**



Email: [mpaclassics@hotmail.com](mailto:mpaclassics@hotmail.com)

Tel: 01449 767070

**Unit 2, Old Station Yard, Station Road, Wetheringsett, IP14 5QJ  
Next door to Mid Suffolk Light Railway Museum**

# WETHERINGSETT PARISH COUNCILLORS

## Parish Councillors

Cllr Charles Harvey	CHAIRMAN	Charles@the-harveys.org	
Cllr Elizabeth Cain	VICE CHAIRMAN	eccain@btinternet.com	
Cllr Mrs Ann Arnold		broadoaksuffolk@googlemail.com	01449 767781
Cllr Tony Alston		tonyalston@hotmail.com	01449 766231
Cllr Barry Lacey		sally.lacey@btconnect.com	01728 860273
Cllr Mrs Elizabeth Aldred		aldred.sons@gmail.com	01728 860482
Cllr Mike Pease		mikepease@btinternet.com	
Cllr Mrs Hilary Green		greenhils2911@gmail.com	
Cllr Mrs Sue Gibbs		suegibbsj10@hotmail.co.uk	01449 766735
Cllr Claire Estcourt		clairehestcourt@gmail.com	
Cllr David Brown		daveandjanetbrown@gmail.com	01449 766151
Parish Clerk: Mrs Lynne Cockerton		lynne.cockerton@btopenworld.com	01728 862001
<u>County &amp; District Councillor :</u>			
Cllr Andrew Stringer			01449 780339
Stowmarket Safer Neighbourhood Team		Stowmarket.snt@suffolk.pnn.police.uk	101 (non emergency calls only)



# NEWSLETTER

Once again, we hope you have enjoyed this, the third digital issue of the newsletter. Please alert others you know in the village who may not realise where they can find the newsletter — on the village website:

<http://wetheringsettcumbrockford.onesuffolk.net/>

This is your newsletter.

Please get in touch with any Village related news, or any articles you feel may be of interest or amusement.

Stay well.