

WETHERINGSETT
-CUM-
BROCKFORD
NEWSLETTER

DECEMBER 2020 - JANUARY 2021

Inside -



Census 2021
Christmas Ghost story
School news
Latest on the Village Hall
Church Services
New - 'It's a Dog's Life'
News from the Middy
And much more...

USEFUL CONTACTS

VILLAGE HALL BOOKINGS ~ Sue Stannard	01449 767752
CHURCH WARDENS ~ Ken Goudy	01449 673648
~ Michael Churchill	01449 768869
Wetheringsett VC Primary School	01449 766215
Headteacher ~ Mrs Hookway	Chair of Governors ~ Jo Pitt
PARISH TREE WARDEN ~ Elizabeth Aldred	01728 860482
TOWNLANDS TRUST~	
PARISH FOOTPATH WARDEN ~ Elizabeth Aldred	01728 860482
RSPCA Suffolk East & Ipswich branch ~ Ian Hendry	01449 767747
NON-EMERGENCY POLICE Reporting, Information or Enquiries	101
MENDLESHAM HEALTH CENTRE	01449 767722

Editor contact: Cally Buch 01449 766417

wetheringsettnews@gmail.com

Deadline for copy 15th of every month.

Typed announcements by email only .pdf or word .doc preferably please.

HALF PAGE ADVERTS SHOULD BE IN LANDSCAPE FORMAT

Any contributions from the village community are welcomed.

The newsletter is for the community and serves to inform and give news and the occasional interesting fact or two. Editor reserves the right to amend pieces due to space restrictions. If pieces for inclusion are not formatted, Editor reserves the right to amend as best fits the edition. Views expressed within are not necessarily those of the editor and contributions are made from various sources.

Distribution is organised by Eddie and Sue Payne 01449 767794

Parish website;

<http://wetheringsettcumbrockford.onesuffolk.net/home/>

DECEMBER

Welcome to the
December 2020 &
January 2021 issue of
your Newsletter

JANUARY



Bumper issue this month!

As well as the usual welcome news from our smashing Primary School, we've got an update on activities at The Middy; lots from our local nature reporters - including ideas of what to look out for around the village; also, a new reporter joins our ranks - see our light-hearted take on 'It's a Dog's Life' on p. As usual the times of all the church services are included. We have a 'heads up' on the national decennial census for 2021, p. There's news about Townsland Trust, Village Hall and the Neighbourhood Plan and much more. To get you in the mood for late night ghost story telling around the fire, you can find this year's ghost story on p.

Enjoy your Christmas and let's hope better times are ahead for 2021.

Cally (Editor)

Newsletter Distribution

Thank
you

As this year draws to a close we wanted to thank all those who have distributed the newsletter through 2020. We usually say thank you for delivery during wind, sun, snow and rain, but this year there has been the pandemic too.

Wetheringsett-cum-Brockford has many parts, and it is thanks to the volunteers that the newsletter reaches them all.

So, thanks to Malcolm, Angela and Des, Gerda, Steve and Nina, Sue, Linda, Elizabeth, Lesley, Andrea, Fiona, Jo and Tim, Mike and Angie, Shirley, and earlier in the year, John and Rose.

Next delivery will be the end of January 2021

Sue and Eddie Payne

01449 767794



Optimal Heating

Father & Son Team
with over 30 years experience

Specialist Heating Engineers
Oil, Natural Gas & LPG Servicing and Repairs



Tel: 01728 628687
Mobile: 07806 660399



Rosedale FUNERAL HOME

The Rosedale
Funeral Plan
enables you
to select and
pay for the
arrangements
of your choice
at today's
prices.



A family
business
- we believe
it makes a
difference

BEREAVEMENT
SUPPORT GROUP

...

ADVICE ON
FUNERAL GRANTS



Rosedale House
63 Victoria Rd
Diss

24hr Tel:
**01379
640810**

mymow

WITH ALL THE TRIMMINGS



mowing, trimming, hedging, landscaping,
digging...

We are a local, reliable, family run grass cutting and garden maintenance company. We will provide you with an honest and reliable service and a perfectly cut lawn to enjoy all year round.

Visit our website to meet the mymow team and call us today for a free consultation and no obligation quote.

rob@mymow.co.uk
www.mymow.co.uk
07747037503



Snippets from the Village History:

The Village Hall written by Katie Goudy

By October 1968 concern was felt at the lack of cutlery and members suggested a start be made towards some new. Also the 100 chairs were now reduced to 78 and the order was given for a further 25 to be purchased.

In 1969 the Woman's Institute asked the Village Hall Committee if there could be washing facilities for use in the ladies toilets, and at that same meeting the decorating of the interior of the Hall was discussed. During that summer the decorating was completed and MR Peter Gissing was thanked for doing it in his spare time.

By March 1970, a wash basin had been installed in the ladies cloakroom—so all was now well in that area! New curtains had now been put up at all the windows, complete with swish rails.

It appears that ever since the Village Hall was erected there had been a never ending list of repairs, this installed, that painted and a hundred and one other items bought or given over the years, and we suppose that as one old committee gives way to new, it will continue so. The Village Hall will always need funds to carry on, and it's not always easy to find new money raising efforts, but to have a hall is something, and no one can say they haven't had cause to use it at some time or other and as 1982 gets under way the committee is giving the Hall another new face lift—and various money raising efforts are being arranged and so it goes on; you get one job done and another crops up immediately, but we all know we would be lost without our VILLAGE HALL, so lets hope it stays erect for many, many more years.



The finishing

lines of Katie

Goudy's entry, writing about the Village hall, in 'A Village History.

*Wetheringsett-cum-Brockford' have special
resonance at this particular time—the hall's 100th anniversary.*

She tells us that, at the time of writing in 1982, the hall was undergoing a facelift. I wonder, since that time, how many face lifts there have been?

*Next year I will be selecting some other snippets from the Village History
to reproduce here*

Swim to keep fit, at The Cedars Pool

After four months of very busy use, the pool has gone very quiet. We are hoping to replace the liner, but not sure which side of Christmas. However, we hope that those needing the exercise over the festive season will be able to swim - we hope there will be a festive season!



Anyway, looking forward to seeing all registered swimmers in 2021.
AJA

Contact: tonyalston@hotmail.com



Amanda
Polley

Swimming Lessons

Private one-to-one swimming lessons nr Wetheringsett

For all ages and abilities

30 min sessions

Available on weekday evenings and weekends

Experienced, STA Qualified, CRB checked and Insured

Call **07910 376 906** or

Email **theswimteacher@yahoo.com** for details

Did you know?

It's technically illegal to eat mince pies on Christmas Day in England. In the 17th century, Oliver Cromwell banned Christmas pudding, mince pies and anything to do with gluttony. The law has never been rescinded.

Robins on cards started as a joke 150 years ago when postmen wore red tunics and were named after them.





WETHERINGSETT-CUM-BROCKFORD NEWSLETTER

Would you like to join our small team?

Clare, who has managed the finances of the newsletter over the last ten years is stepping down and we need someone to replace her.

This is a voluntary role. If you would enjoy managing our very modest accounts, which entails on-line banking to make monthly payments to the printer and invoicing our advertisers and overseeing their online payments - then we would love to welcome you.

For further details please email cally.buch@yahoo.com



**Providing Personal Care
in your own Home**



**Recruiting
NOW!
We need
exceptional
people who
love to
care**

Do you need help with:

**Personal Care
Dementia Care
Respite Care
Help Around the
House
Day Trips Special
Occasions**

**Request a
Brochure or book
an appointment**
on **01449 763086**
or **01284 711845**



We only employ people who love to care.

**MyCare
at Home**

Supporting Independent Living

www.mycare-at-home.co.uk



Wetheringsett Wildlife

Following my first article last month I have been joined by “Secret Stan” who has kindly agreed to collaborate on these articles. The following is mainly his work. Thanks are due!

When the clocks go back and we shift into winter mode there are compensations for bird lovers and spotters.

Many species come down from the snow lands to spend a milder winter with us and two of my favourites are the Fieldfares and Redwings of genus *Turdus*. The unflattering name shows they are cousins from the thrush family, similar sizes and plumage but the Redwing has its scarlet flash under the wing and is slightly smaller. They can often be seen along by the Middy and in Town Lane and the Fieldfare has a distinctive "Chack - Chack " call which I heard at the beginning of October this year. Both types forage in groups chiefly plucking the hedgerows for berries.

Fieldfare



The Fieldfare is the largest member of the thrush family and don't usually visit gardens but a few years ago I had one in my garden that liked to throw its weight about. There was snow on the ground for a couple of weeks so we put out some apples. A large

Fieldfare decided they were all his and set about driving away any interlopers. However, birds are intelligent opportunists so after a while they started gathering together and whilst the Fieldfare defended one apple the others nipped in for a peck or two at the other apples. This whole event allowed me a very close view of this individual bird for quite a few days.





Wetheringsett Wildlife cont.

About once per century Fieldfares turn up in huge numbers – there was a roost of 25,000 in 1977 in Warwickshire! However, the most I have seen this year so far is about 50. We have until the end of April to see them.

Other winter visitors to the parish include exotic Wildfowl – Ducks, Geese, Swans and even Long Eared Owls visit East Anglia for the winter so keep your eyes to the skies when you are on your lockdown walks on the footpaths which we are so lucky to have in Wetheringsett.



Long Eared Owl

The Winter skies, with little light pollution, shows the stars on a cold

clear night within the parish and you are often accompanied by the call of Tawny Owls.... in a coming feature I will be doing a piece on the three main types seen in the area.

To the birds of course the extra hours of darkness mean a shorter time to gather fuel to shiver the long night away, so we must help by feeding and importantly providing fresh water. Don't forget birds feed at different levels. Blackbirds and Robins ground feed while Tits and Starlings perform circus acts to get at the nuts! Fatty Christmas scraps will help tremendously but be wary of rats who also like a high fat diet. A good tip is to leave nesting boxes up...Blue Tits have been known to huddle together in numbers to keep warm.

The difference in the bird world between a "Twitcher" and a "Spotter" is the former goes to the birds and the latter lets the birds come to them....Happy Spotting!

If you do see anything of interest, we would be glad to hear of it. Contact us at spotterstan@gmail.com.



Taylormade Kitchens

Kitchens - Bedrooms - Bathrooms
Designs from traditional to ultra modern.

*Any finish including hand painted, satin lacquered or high gloss.
Bespoke units made to any size, birch plywood carcasses optional.
Choice of Granite, Quartz, Timber, Solid Surface or Laminate
worktops.*

*Most makes of appliances - sinks - taps supplied at competitive prices.
Large range of Bathroom suites, showers, enclosures & brassware.*

Professional meticulous Installations. ~ Supply only if required.

**Please contact Neil Taylor on
Tel: 01728 860856 ~ Mobile: 07860 602317**

*Gill Nicholls
A singer
for your special occasion*

*Gill sings all time favourites from all
decades, especially the '30s, '40s and '50s.
She also performs Old Tyme Music Hall in
costume and can sing a
song or songs chosen
by you for that
special occasion.*

All enquiries
most welcome,
call Gill on
01449 781375 or
07505227606



Email: gnicholls3@aol.com
www.gillnicholls.co.uk



Do you need help
with Babysitting or
Ironing?

My name is Georgie

I'm a Year 11
student and I am looking for
work.

If you need any
ironing done or
babysitting,
please give me a
call or text me on
07541 834453

You can also
email -

georgiebullock12345@gmail.com

Thank you



Wetheringsett cum Brockford Parish Council Report on the video meeting held Monday 2nd November 2020

Land east of Hockey Hill – a number of parishioners joined the meeting to express views on the planning application for 11 dwellings on land east of Hockey Hill (see MSDC planning website DC/20/04692). One of the main concerns relates to the single-track access to the site and constrained narrow entrance onto Hockey Hill to accommodate potentially an additional 20 – 30 vehicles. Visibility in and out of the access was a concern - impaired during school pick-up and drop-off when that section of road is particularly congested. Also the site is outside the village settlement boundary and MSDC currently has a 5-year land supply for new builds. Having listened to parishioners' concerns and considered the application papers, the parish council agreed to recommend refusal of the application to MSDC.

Town Lane Haulage Site: stacked containers – District Cllr Stringer confirmed a Planning Officer from MSDC had visited the site and was compiling a report on his visit. Cllr Stringer did confirm that containers could be stacked 4 high without planning permission. The Parish Council will be supplied with a copy of the report when available.

Remembrance Sunday – it was reported the services that were to be held at both Wetheringsett and Mendlesham could no longer go ahead due to the lockdown. The Parish Council poppy wreaths for both Memorials would however be laid by the PC representatives.

Parish Council Vacancy – a vacancy has arisen due to the resignation of Mrs. Sue Gibbs who will be moving from the village. Members recorded their huge thanks to Sue for all her work during her time as a councillor, particularly she having taken over the village hall admin and accounts. The statutory notice of the vacancy is on display on the village notice boards. Unless a by-election is called by ten or more parishioners by 26 November 2020 the Parish Council will be free to fill the vacancy by co-option. Any parishioner who may be interested in joining the council should contact the Chairman or Clerk.

Meetings – these continue to be held via video call for the foreseeable future and are open to parishioners to join via the requested video link.

Lockdown – any parishioner in need of assistance with shopping/prescription collections please do contact a parish councillor or the clerk.

**Dates of next meetings: Monday 7 December 2020 and Monday 4 January 2021
both at 7pm.**

In the meantime our Parish Councillors take the opportunity, during these difficult times, to wish all parishioners a happy Christmas and hopeful New Year



Wetheringsett Manor

ACORN

Better days, Better lives

Wetheringsett Manor School has now opened to pupils.

We are looking for a caterer, who would be able to provide packed lunches for eight people currently. Moving forward we would be looking for them to cook hot meals in state-of-the-art kitchen facilities.

We are also looking for a guitar teacher, who would be able to work with the pupils.

**If you would like more information please contact us on
01449 703935
or David Bishop on 07423 707438.**

Friends of Debenham Library

This decorative plate was found in Dove Cottage and donated to the library by Chris Bishop, and is now on display in the



library. On the back it appears to be made by C. F. Butler in 1975 for Mr & Mrs J. B. Brooking, 5 Moores Close Debenham



Debenham Festival of Villages.

Were you here for that festival in 1975?



As we are now in our second but hopefully shorter lockdown I thought readers might be interested to hear how our canine companions are coping. This is what our dog has to say on the current situation...



It's a Dog's Life !

"So it seems we have to stay in again...unless we need to go out. I must say I've found this a bit confusing so goodness knows what my humans are feeling.

We have been going out of course, I'm a dog after all and we need the exercise. I'm doing my best to adhere to the rule on social distancing - although flushing out the odd rabbit or pheasant is permitted I imagine?

I believe there's been much said about the importance of self care and I'm doing my best to comply: I've found a long snooze on the sofa is very beneficial, (not so popular if I'm muddy.... don't understand why), and as a way of releasing tension I find a vigorous game of chase and throw with my rubber squeaky chicken works wonders. I think this will benefit my humans so I've taken to leaving it for them to use too...in their bed, on the stairs and in the bathroom. I'm sure it cheers them up when one of them stands on it at 4am.

Like everyone else I'm watching my diet. I find staring balefully at them when they eat generally puts them off so that often means a tasty treat comes my way! And she keeps making biscuits...surely they must be for me?

Lastly , I'm happy to offer proven calming techniques - belly rubs, ear tickles and endless kisses and cuddles - for me of course! It's nice to know I'm helping them through this in some small way...."

Woofles of Wetheringsett

Wagging Tails



Take the right direction with expert financial advice

I provide a comprehensive wealth management service, offering specialist face-to-face advice tailored to you. My services include:

- Investment Planning
- Inheritance Tax Planning
- Retirement Planning
- Intergenerational Planning

For further details please contact:



Amanda Dossett

T: 01449 768768 | M: 07808 549876

E: amanda.dossett@sjpp.co.uk

W: www.amandadossett.co.uk

Christmas Crackers!

- * How much did Santa pay for his sleigh?
Nothing – it was on the house.
- * How did the bauble know that she was addicted to Christmas?
She'd been hooked on Christmas trees all her life
- * Which side of a turkey has the most feathers? The outside
- * What did the snowman say to the aggressive carrot?
"Get out of my face."
- * Who hides in a bakery at Christmas? A mince spy
- * Why did Santa have to go to the hospital?
Because of his poor elf.
- * Why did the red-nosed reindeer help the old lady cross the road?
It would have been Rudolph him not to.
- * What is Santa's favourite kind of pizza?
One that's deep-pan, crisp and even.

Merry Christmas



Christmas Ghost Story

Timmy's sobs slowly abated as he curled inside the comfort of his mum's arms. Karen felt the tension in his body gradually leave him as he drifted into sleep. She was perplexed. Her son wasn't given to nightmares, but he had been truly scared.

It was a soft dawn light that fell onto the pillow. Contemplation of the day ahead, Christmas day, put all thought of the night's drama into a hovering shadow for Timmy. Friendships had been forged over the past forty-eight hours and he was eager to meet up again and share the excitement of all things Christmas.

This hotel had appealed to Karen, she needed somewhere previously unknown and untainted with reminders of past Christmases for her first Christmas alone with Timmy. A small family run establishment, that promised a child orientated festive season.

The day went well and tired flush faced children were gradually rounded up for bed. Timmy's fears returned. "But I heard them mummy, crying and crying. They said they were trapped, that they couldn't get out!" Some comfort was accepted when Karen said he could sleep in her bed once again.

"Only one more night Timmy, then we go home in the morning"

She looked down on him, asleep, as she left the room to go and finish festivities with the other guests. Every fibre of her being suffused with love for this gentle child.

"No, no, I Can't. Oh, stop oh no!" Karen came awake. "it's OK, Timmy. It's alright. I'm here. It's alright"

The room, brightly moonlit, showed Karen the terror etched on Timmy's face.

"Can't you hear them mummy? Listen, listen! They want to come out. They're trapped"

Karen could only hear Timmy's fear filled cries. She saw his eyes wide stretched and tear filled. He slammed his fists over his ears and continued an appalled response to the calls audible only to him, as Karen gathered him up and left the bedroom. Karen was shocked, this was no nightmare – her son was very much awake.

Continued on page





November 2020

I hope this finds everybody well. This half term continues to be moving swiftly and enjoyably on and we feel we have adapted to all of our new regimes. The children continue to work hard and their positivity and energy are certainly a joy to




be around. The staff and pupils have achieved so much already since September but there is still so much more learning and fun to fit in before the end of term!

Remembrance



The children have all made poppies in class this week in remembrance of Armistice Day which we have displayed on our walls. It is amazing how many different ways there are to create a poppy! This has also stimulated a lot of

thoughtful discussions with the children. We held a minute's silence on the playground on Wednesday. All the class contributions for the Poppy displays can be viewed on the school website.

 Why did the music teacher need a ladder? To reach the high notes.



Children in Need



On Friday we participated in joining Joe Wicks for the final 25 minutes of his 24 hours PE challenge. The children really enjoyed taking part. We need to thank you again for your donations to Children in Need. After further donations, after school, we raised a total of £43.40! Thank you very much.

The children have enjoyed the non-uniform day and participated in discussions and activities to remind us all that there are families and children who are in great need, to think of others and to help in any small way we can

Mrs Sheeran
Head of school



What did the pencil sharpener say to the pencil?
Stop going in circles and get to the point!

What did you learn in school today?
Not enough, I have to go back tomorrow!

THE WETHERINGSETT CHURCH AND TOWNSLAND TRUST ESTATE CHARITY

The Church and Townsland Trust is an historic charity originating in 1836.

The charity owns land in the parish and looks after that land for future generations.

The trustees meet 4 times a year to ensure the charity is run in accordance with it's constitution.

Every Christmas The Charity donates a sum of money (gained from interest on its assets every year) that is split, as laid out in the constitution, equally three ways:

Church School 'Deserving and Necessitous' of the parish

The amount is usually between £4,000- £5,000 to each group.

Over the past few years payments have been made automatically to a group of people at Christmas. These are people who in the past have deemed to be in need.

Now due to various circumstances, including GDPR and the impact of Covid, we are asking anyone who is struggling, in any way, to apply for funds from the 'Deserving and Necessitous' portion.

Any group or individual in the parish of Wetheringsett-cum-Brockford deemed to be deserving or necessitous (needy) can apply for funds. Decisions are made in line with constitutional guidelines, this could include money for heating, medical equipment, etc, or funding charitable organisations that help those in the Parish.

In the past the Trust has donated money to help with transport costs to hospital and further education establishments, medical equipment, medical treatments, a donation to students helping to build a school in South Africa, equipment for the "Curtain's Up" drama group and paying towards the over 60's Christmas meal.

If you feel you, or someone you know, could be eligible for a donation to assist in a time of need, please get in touch with the Clerk of the Trust. Use the form in the newsletter to give us information regarding your request.

The trustees will consider all applications, funds can be applied for all year.

*If you wish to be considered for donation in time for Christmas, please send your applications to the Clerk by **the 14th of December.***

Please send you application to:

Clerk of Wetheringsett Townsland Trust

23 High Street

Debenham

IP14 6QL

South Hartismere Benefice



December 2020

An Unexpected Christmas

At this Christmas time, we were not expecting this year to be like this. Life was going so well. We started out so full of hope and expectations. Then suddenly our plans were cut short or had to be changed. We were ready to travel, but our plans were thrown into confusion; and just when we thought we knew what the future would hold, that one moment in time, - the outbreak of the virus, - changed our lives, our friends, our community, and the world. We were not sure how to respond. There was so much confusion, and things were beyond our control. No matter how much we complained, or tried to object, we soon realised things would happen anyway. In years to come people will hear the stories of all the commotion, and they won't be sure how much of it is true. It's been a year like no other, full of unexpected events, and the challenges of staying at home and caring for our loved ones as best we can with the restrictions

At that first Christmas, 2000 years ago, Mary and Joseph were not expecting the year to be like that. Life was going so well. They had started out so full of hope and expectations. Then suddenly their plans were cut short and had to be changed. They were ready to travel, but their plans were thrown into confusion; and just when they thought they knew what the future would hold, that one moment in time, - the birth of their son, - changed their lives, their friends, their community, and the world. They were not sure how to respond. There was so much confusion, and things were beyond their control. No matter how much they complained, or tried to object, they soon realised things would happen anyway. In years to come people will hear the stories of all the commotion, and they won't be sure how much of it is true. It had been a year like no other, full of unexpected events, and the challenges of finding a new place to stay, and being separated from their loved ones.

Now and then, there were those who travelled and spread the news. Others were amazed at what was going on. The kindness of strangers was shown with gifts and blessings. Community strengths were seen, and a nation was drawn together by the uncertainty, not knowing what the future will hold. The times may not have gone as we have imagined but we trust, have faith and believe the future will be brighter because of the one who came to us at Christmas - Jesus Christ.

My love and prayers to you this Christmas, wherever you are, and whoever you are with.

Blessings, *Julia*

From the Parishes

In Loving Memory:

David Miller, Gislingham; Elizabeth Massey, Thorndon; Anne Savereaux, Yaxley;
Ronald Hubbard, Mellis



South Hartismere Benefice Recovery Worship Rota

December 2020

Wednesday 2nd December

Mid-week Worship On-line 7.00pm

Week 1

Sunday 6th December
The 2nd Sunday of Advent

On-line	9.00am	Worship for All
Gislingham	10.30am	Holy Communion
Thorndon	10.30am	Worship for All
Thorndon	4.00pm	CONNECT

Wednesday 9th December

Mid-week Worship On-line 7.00pm

Week 2

Sunday 13th December
The 3rd Sunday of Advent

On-line	9.00am	Worship for All
Thornham Parva	10.30am	Holy Communion
Yaxley	10.30am	Worship for All
Thorndon	4.00pm	CONNECT

Wednesday 16th December

Mid-week Worship On-line 7.00pm

Week 3

Sunday 20th December
The 4th Sunday of Advent

On-line	9.00am	Worship for All
Mellis	10.30am	Holy Communion
Stoke Ash	10.30am	Worship for All
Thorndon	4.00pm	CONNECT

Wednesday 23rd December

Mid-week Worship On-line 7.00pm

Thursday 24th December
Christmas Eve

Thorndon	11.30pm	Midnight Holy Communion
----------	---------	-------------------------

Friday 25th December
Christmas Day

Gislingham	9.30am	Worship for All
Mellis	10.30am	Worship for All
Wetheringsett	10.30am	Holy Communion

Week 4

Sunday 27th December
The 1st Sunday of Christmas

On-line	9.00am	Worship for All
Thornham Magna	10.30am	Holy Communion
Thorndon	4.00pm	CONNECT

Wednesday 30th December

Mid-week Worship On-line 7.00pm

Contact:



Reverend Canon Julia Lall - Rector
rev.julialall@gmail.com 01379 678064

Reverend Lauren Moore – Curate
rev.laurenmoore@gmail.com 07798705876



<https://www.facebook.com/groups/SouthHartismereChurches/>



South Hartismere Benefice Recovery Worship Rota

January 2021

Week 1

Sunday 3rd January
The 2nd Sunday of Christmas

On-line	9.00am	Worship for All
Gislingham	10.30am	Holy Communion
Thorndon	4.00pm	CONNECT

Wednesday 6th January
The Epiphany

Mid-week Worship On-line 7.00pm

Week 2

Sunday 10th January
The Baptism of Christ

On-line	9.00am	Worship for All
Thornham Parva	10.30am	Worship for All
Yaxley	10.30am	Holy Communion
Thorndon	4.00pm	CONNECT

Wednesday 13th January

Mid-week Worship On-line 7.00pm

Week 3

Sunday 17th January
The 2nd Sunday of Epiphany

On-line	9.00am	Worship for All
Wetheringsett	10.30am	Holy Communion
Mellis	10.30am	Worship for All
Thorndon	4.00pm	CONNECT

Wednesday 20th January

Mid-week Worship On-line 7.00pm

Week 4

Sunday 24th January
The 3rd Sunday of Epiphany

On-line	9.00am	Worship for All
Thornham Magna	10.30am	Holy Communion
Stoke Ash	10.30am	Worship for All
Thorndon	4.00pm	CONNECT

Wednesday 27th January

Mid-week Worship On-line 7.00pm

Week 5

Sunday 31st January
The 4th Sunday of Epiphany

Thorndon	10.30am	Commissioning and Re-commissioning of Lay Elders and Holy Communion
Thorndon	4.00pm	CONNECT

Contact:



Reverend Canon Julia Lall - Rector
rev.julialall@gmail.com 01379 678064



Reverend Lauren Moore – Curate
rev.laurenmoore@gmail.com 07798705876
<https://www.facebook.com/groups/SouthHartismereChurches/>



"You are never too old to set another goal,
or to dream a new dream."

— C.S. Lewis



The Hair Studio at Mendlesham Ltd

BEV & KIRSTY

FORMERLEY CURL UP & DYE

**WE ARE BOTH FULLY QUALIFIED WITH OVER 40 YEARS
OF EXPERIENCE BETWEEN US**

**PROFESSIONAL ADVICE AND PERSONAL ATTENTION
IN ALL ASPECTS OF HAIRDRESSING**

PERMS: COLOURS: HI-LITES: CASUAL PUT-UPS WEDDING HAIR: RESTYLES Etc

FOR ALL THE FAMILY AT UNBEATABLE PRICES

**SENIOR CITIZEN RATES TUESDAY ONLY
EAR PIERCING AVAILABLE**

EASY OFF ROAD PARKING

**LOYALTY CARD, STAMP EVERY SERVICE
ALL DEBIT/CREDIT CARDS ACCEPTED**

GIFT VOUCHERS AVAILABLE

FOR ALL ADVICE AND APPOINTMENTS

CALL US ON 01449 766977

OR VISIT US AT

Ropers Farm, Church Road, Mendlesham, IP14 5SF

www.hairstudioatmendlesham.co.uk

To make an application to
THE WETHERINGSETT CHURCH AND TOWNSLAND TRUST ESTATE CHARITY
you will need to provide the following details, using these headings:

- **Name**
- **Name of person the application is for (if different)**
- **Relationship to you**
- **Address, inc. postcode and phone number**
- **Circumstances which can be deemed 'deserving or necessitus'. (please give as much information as you can – all applications will be discussed confidentially).**
- **Amount applied for and what it will be spent on (receipts and proof of purchases will be required by the Board of Trustees)**



Christmas Ghost Story continued:

They ventured back into the bedroom at daybreak. Sleep, though fitful, had once again removed the worst of Timmy's fears, but their packing was completed in a heightened nervous state. Both felt more than ready to leave. Karen politely refused breakfast and made tentative enquiries about any other guests ever having heard anything in the bedrooms. Her question went almost unheard a brushed off shrug; but she caught a lightening flash of eye contact between her hosts.

As they were leaving Timmy said "Oh, I've left my backpack upstairs!" As Karen turned to go back, her host called out, "Oh, a big boy like you doesn't need his mummy to get it, does he?". Hesitation, and then Timmy ran back up the stairs. Karen's bags were then picked up and she was ushered without ceremony, out, and into her car where she waited uneasily wondering at the exchange she had just experienced. Though she couldn't quite say why, her relief was immense as Timmy ran out, clutching his backpack, and climbed into the back of the car.

"It won't take us too long to get home and we'll stop soon to have some breakfast, sweetheart".

"That will be nice mummy" said Timmy. As she looked into the mirror, she saw his smiling face and the vacant dark eyes that did not belong to her son, and her blood ran cold.

Carolyn Lesley



Creative Silk Painting

Book yourself on a day course to learn the Art of Creative Silk Scarf Painting

No experience necessary & beginners are very welcome.

Booking is essential! These are small workshops allow for individual tuition, Based in Pages Green.

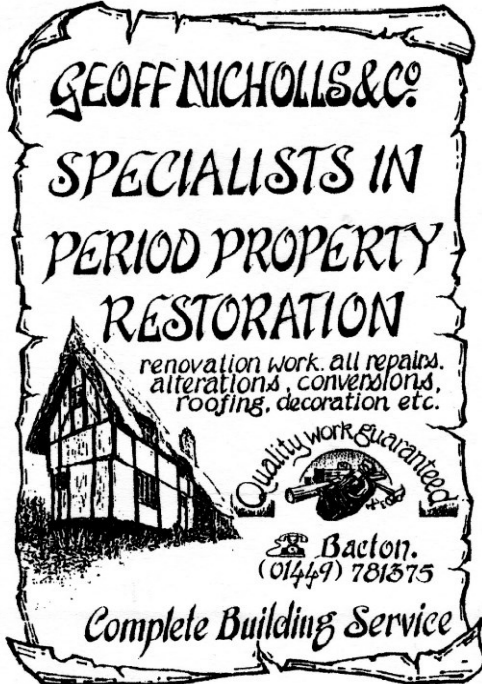
Workshop Days are 10am~3pm, cost £45

Be Inspired, Get Creative, Have Fun

Various dates available, Please see website for dates or call Ruth ...

Call to book your place...
01728 861899

theartysilkworm.co.uk



GEOFF NICHOLLS & CO
SPECIALISTS IN
PERIOD PROPERTY
RESTORATION

renovation work, all repairs,
alterations, conversions,
roofing, decoration etc.

Quality work guaranteed

Bacton.
(01449) 781375

Complete Building Service

Vince Plumbing and Heating

Gas Boilers and Heating, Bathrooms, Kitchens,
and Plumbing.

Justin Vince

07585081787

vinceplumbingandheating@gmail.com



Wetheringsett Village Hall

Village Hall

News

As we look forward to 2021, we are hopeful that the refurbishment of the Village Hall will be completed and we can begin to plan some community events to celebrate its centenary year.



Work has been undertaken on the kitchen, the stage, the floor, the decoration and there is ongoing work on the storeroom. While the refurbished Hall may not last another 100 years, it will hopefully serve the village for several more years.

We would like the village to help us to prepare for opening, which realistically looks more like Springtime now:-

New Village Hall Sign

There have been a few entries from the community and school, but the delay in reopening means there is an opportunity to extend the closing date to March 2021. Have you eaten school dinners in the village hall, dressed up for a panto, or attended a village fete? Could you **design a sign!**

If you want more details please contact Councillor Mike Pease.

All entries will be displayed in the village at a later date. The Parish Council are offering a £25.00 prize to the winner and will then commission a new sign.

Village Hall Memories and Photo

Do you have any old photos of the Village Hall, articles on past events or memories of being there? We would like to use these items in a display when we open the Village Hall.

Any items used can be copied if necessary, and any handwritten artefacts typed.

If you can help, please contact Sue Payne on behalf of the
Village Hall Committee (01449 767704)

A Call to Arms



Dear Villagers, as you will know we have been endeavouring for some time to get a *Neighbourhood Plan* off the ground.

Without a plan we are vulnerable to opportunist developers so we urgently need to have a cohesive approach to the way we would like our village to look in the future. This includes where and how much development the village as a whole would accept in line with government house-building targets.

To date we have been a small group working on the various elements of the process and we are looking for new members to help carry this process forward. Due to the pressures Covid has placed on our lives, some of our members have had to take a step back and we thank them for their efforts to date.

To put it bluntly, we need YOU!. In order for this process to represent all interests we need people from all hamlets in Wetheringsett village so each area is represented, as well as a range of age groups.



If you think you can make a positive contribution please contact our Parish Clerk, Lynne Cockerton at lynne.cockerton@btopenworld.com, and one of the councillors will get in touch with you.

Don't ask what your village can do for you but what you can do for your village.

Thank you.
Hilary Green
On behalf of the Parish Council

A Celebration of Nature

Winter brings magic in the natural world around us. Chance sightings of startling murmurations, deer standing silhouetted on the horizon of the ploughed field and gangs of long tailed tits twittering their joy when we hang bird food from our garden trees. An apt nickname for these wonderful little birds is

'Flying Teaspoons' !



Sara MacIver

At night, you can hear the tawny owl calling 'twit-twoo' for they call out far more in Winter. Although established pairs probably never leave their territories, young birds do disperse from breeding grounds in Autumn.

"When we try to pick out anything by itself, we find it hitched to the everything else in the universe".

John Muir

As we arrive in the festive season, which is normally one of excitement, anticipation and very possibly, overspend for many of us, we celebrate not only the birth of Jesus, but also the midwinter gift giving, family time and socialising. This year, we are living with government restrictions that have slowed our normal human activity as we head toward the Christmas holidays, and we keep in mind those whose livelihoods have been disrupted by events, but throughout it all many of us have found solace in the constancy of nature to which we turned in the last Lockdown. Nature can continue to lift our spirits through the darker months of Winter. There will still be activity and we can get involved in enjoying and supporting it. We can walk, run, and cycle in the countryside and green spaces enjoying all that surrounds us. There are a number of useful Apps you can download to your phone that will identify plants and trees as you walk. It is amazing what you can learn once you look closely.

As the dark evenings draw in, there are many books, podcasts and 'Audible' listens that can occupy the mind, and prepare you for more observations when you spend time outside.

Hopefully, the appreciation of Nature during these turbulent times will have focussed many minds on what we should be doing to conserve and maintain it. We are part of it, we are nurtured by it and as such we each have a responsibility to care of it.

Wishing everyone a very happy Festive period and don't forget to look out for the reindeer on Christmas Eve!



Wetheringsett Nature Lover

Our Church and Our Neighbourhood

Just before Lock-down, the Wetheringsett Charity Trustees met at Thorndon Church. The church has been delightfully updated with the rear pews removed and the area carpeted, with infra-red overhead heaters. The back was vertically boarded and behind the almost hidden door was a small kitchen, and to the other side, toilets.

Why cannot we have a useful church like this, I ask?

We also have a Village hall which is having redecoration so that, as for the last 20 years, "it will do one more year". Well done those at work, but what happened

to those people who enthusiastically voted to renew the Hall?

Our Neighbourhood Plan is floundering for lack of support: how many of those enthusiasts above have come forward? We need a Neighbourhood Plan so that we have a say in the development of the parish, and so that our Parish Council is given a higher proportion of the CIL* taxes that come from us.



Do YOU care about the parish in which you live? Everybody makes time for what they want to do; are YOU really so busy that you will not make a little time to help. Do YOU do anything to help society, or are you just a taker not a giver?

A Parish Councillor

*CIL *Community Infrastructure Levy* - is a charge which can be levied by local authorities on new development in their area. It is an important tool for local authorities to use to help them deliver the infrastructure needed to support development in their area.



"New Year's Day... now is the accepted time to make your regular annual good resolutions. Next week you can begin paving hell with them as usual."

Mark Twain



NEWS FROM THE MIDDY

Whilst Covid has put paid to regular business at the railway, 'Covid Safe' work has still been going on behind the scenes. So much so that the decision has been made to run three popular 'Santa Specials' these are **already fully booked** with a long waiting list.

If you fancy going to the New Year's Day Steam & Light Festival which is also taking place you will also need to pre-book for this event, details can be found on: www.MSLR.org.uk/What's On/Santa Specials

Or call 01473 890622

The Middy Bar (aka The Kitchener Arms)

Those village residents who have been fortunate enough to experience the bar at The Middy will undoubtedly have missed its presence over the past few months. Bar Manager, Stephen (heard to mutter "I hate throwing good beer away"), finally had to accept defeat in his efforts to get the bar open; the difficulties involved in keeping customers safe were just too great with the government guidance to hospitality constantly changing and often vague.

However, when the bar is once again open for business, customers will be welcomed back to a freshly renovated carriage. Stephen's team have taken the opportunity to strip off the outside panels, repair and replace, topped off with a fresh coat of paint. Roll on *Early Doors* and *Opening Time!*

On a final note, is there anyone out there who might be interested in working alongside The Middy on ideas to seek funding for the community bar and café projects? The Middy team are also looking to recruit a café manager to realise the opportunities of the newly refurbished tearoom. There are also opportunities for anyone who would like to help with the shop and bar.

Contact can be made through the website or by phone (see above) or email **Stephen at mslr.middybar@gmail.com**

Michael Brame,

60 Pretyman Avenue, Bacton, IP 14 4NY

“A” rated UPVC windows, doors and conservatories with ‘A’ rated installation ‘C’ rated prices

Complete replacement of fascias, soffits, guttering and downpipes

Needing quotes for any of the above?

Contact Michael on

01449 781533 mob. 07931 784470

Ipswich Mobile Library Route 7

7H	<i>Brockford St</i>	<i>Old Griffin</i>	1245 – 1300
7I	<i>Wetheringsett</i>	<i>Hockey Hill</i>	1405 – 1420
7J	<i>Wetheringsett</i>	<i>Wetherup St</i>	1430 – 1445
7K	<i>Wetheringsett</i>	<i>Park Green</i>	1450 – 1505

Email: help@suffolklibraries.co.uk

Telephone: 01473 263838

Calling every 4 weeks on ***Thursdays***

Next visits: Thursday December 17th & January 14th

ADVERTISING RATES

for the Wetheringsett-Cum-Brockford Newsletter

A5 Full Page	11 Issues - £ 100.00	5 Issues - £ 50.00
A5 Half Page	11 Issues - £ 50.00	5 Issues - £ 25.00
A5 Quarter Page	11 Issues - £ 40.00	5 Issues - £ 20.00
Back cover	11 Issues - £ 150.00	5 Issues - £ 75.00

RING CLARE ROGERS ON 01728 861382

clarelouiserogers@btinternet.com

WE WELCOME NEW ADVERTISERS

CENSUS 2021

Ready, steady, census 2021

The decennial census is almost upon us.

Households across Wetheringsett will soon be asked to take part in the nationwide survey of housing and the population. It has been carried out every decade since 1801, with the exception of 1941.

Information from the digital-first census will help decide how services are planned and funded in your local area. This could mean things like doctors' surgeries, housing or new bus routes.

Households will receive a letter with a unique access code in the post, allowing them to complete their questionnaire online. Paper questionnaires will be available on request. Census day is March 21.

Further details to follow in February edition of the newsletter

For more information, visit <https://census.gov.uk/>

DIGITAL

copycentre
For All Your Copying



Digital Laser Colour Copies
Plan Prints to A0 size
Booklet - Magazine Printing
Laminating to A2 size

***We print from E-mail, CD
Memory stick, or hard copy***

**EXCELLENT RANGE OF
COLOURED PAPER AND CARD
DOCUMENT COMB BINDING**

Email: info@digitalcopycentre.co.uk

37 Stowupland Street, Stowmarket, IP14 1EG

01449 678100



Cleaning
and
Gardening Services

Friendly team who provide an excellent
cleaning and gardening service

Wetheringsett, Brockford, Mendlesham
and other IP14 areas

Kitchens

Bathrooms

Hoovering

Polishing

Holiday Let Change Over

End of Tenancy

Garden Maintenance

Mowing

Trimming

Please get in touch for availability

Email karinathacker1@gmail.com

or

Phone 01449 767731



"Fast, efficient and thorough
- highly recommended"
The Cartlodge A140



**Boots
n
Blades**

GARDEN MACHINERY SERVICE & REPAIRS.

SPRING INTO ACTION IN YOUR GARDEN

WE NOW HIRE GARDEN MACHINERY OUT FOR THOSE ONE OFF JOBS.

ROTOVATOR, SCARIFIER, POST HOLE BORER AND LOTS MORE

Open Mon - Fri 9am-4pm, Sat 9am - 12pm

Closed Sundays and Bank Holidays

6A MEADOW WORKS BUSINESS PARK, DEBENHAM. IP14 6RP. TEL 01728 860330 EMAIL karen@bootsnblades.co.uk

FOLLOW US ON TWITTER @BOOTSBLADES AND FACEBOOK BOOTSBLADES DEBENHAM

D.I.ALSTON LTD THE CEDARS BROCKFORD

**20ft Containers for self storage:
£100/month inc VAT**

**We can also store your caravan on hardstanding.
Enquiries: 07788 974169**

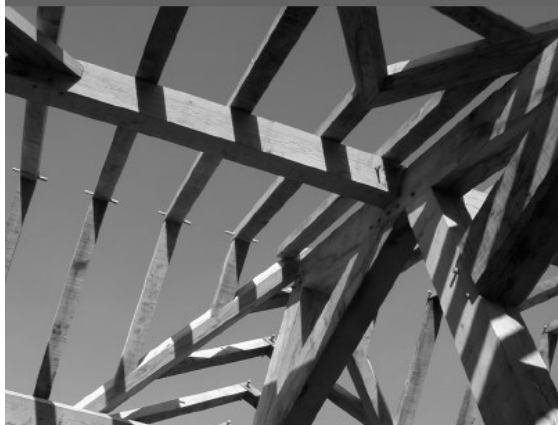
TO LET:

**OFFICES AND WORKSHOPS ALSO
HOLIDAY ACCOMMODATION
AT BROCKFORD RAILWAY SIDING
Tel: 01449 766231**

tonyalston@hotmail.com

Traditional Oak Carpentry

Conservation and Construction



New Homes
Extensions
Garden Frames
Structural Repairs
Historic Reports
Design Service

www.traditionaloakcarpentry.co.uk

01449 768817

RUST IN TIME

Lovingly created in steel that will
"Rust in time" for many years throughout the
changing seasons



FACEBOOK
[@rustintimesuffolk](https://www.facebook.com/rustintimesuffolk)

EBAY
seller:[rustintimesuffolk](https://www.ebay.com/str/rustintimesuffolk)

WEBSITE
www.rustintime.com

Wetheringsett Wildlife – The Colours of Autumn

I have often heard it said that you need a good frost to get the best autumn leaf colours. However, despite the fact that no frosts have occurred at the time of writing there is a wonderful display of colours in the hedgerows around the village. For example, if you venture into the churchyard or along the path alongside the church past the Manor there is plenty to see.

The chemicals in leaves that cause these colours fall into two main groups - carotenoids (mainly yellows and oranges) and anthocyanins (mainly reds). It has long been thought that these were waste products of leaf function that are masked by the green pigment, chlorophyll, that all green plants use to manufacture food by photosynthesis. As the chlorophyll drains away these pigments are revealed. However, recent research has shown that plants produce these pigments in autumn. One new idea is that they allow photosynthesis to carry on for a few more days to allow the plants to get the last bit of nutrients from the decaying leaves. It seems that the reds are more effective in cold, bright conditions as found in North-East America so perhaps you do need a good frost for the best colours!

Maple trees, members of the genus *Acer*, all seem to have great colours – gardeners will be familiar with the Japanese acers. However, around here they perform well too. We have Field Maple, *Acer campestre*, and Sycamore, *Acer pseudoplatanus*, both of which have striking buttery yellow colour now. As the month has worn on, I have noticed other trees joining in – Poplars are late to come into leaf and amongst the first to lose them again, hazel, birches, hawthorn all are making contributions to the yellow display.

Why not choose a sunny day and see how many species you can spot?

SpotterStan





With over 40 specialist auctions throughout the year such as antiques, paintings, vinyl, jewellery & watches, furniture, ceramics, toys, advertising & automobilia, coins & militaria. Full details on our website or contact us to find out more!

WWW.BISHOPANDMILLERAUCTIONS.CO.UK

19 Charles Industrial Estate

Stowmarket

Suffolk

IP14 5AH

01449 673088

enquiries@bm-auctions.co.uk

Debenham & District

Need help with your PC?

Friendly advice & training

Repairs & upgrades

No fix, no fee

Windows – Web – Email

Microsoft Word & Excel expert

Home network – WiFi – TV links

At your Home or Business

Domestic Appliance Repairs



**For local, reliable service please call
Alan:**

**01449 613457
or 07508 051 518**

**WASHING MACHINE DISHWASHER
OVEN HOB TUMBLE DRYER**

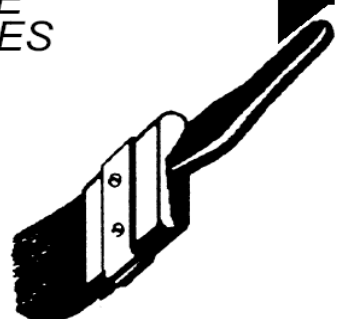
S. C. CLIFFORD PAINTER & DECORATOR

• INTERIOR/EXTERIOR • PRIVATE & COMMERCIAL

*9 Stowmarket Road
Stonham Aspal
Stowmarket
Suffolk IP14 6AB*

**FREE
ESTIMATES**

Tel: STOWMARKET (01449) 711369





Friends of Debenham Library

For the latest details see

www.suffolklibraries.co.uk/coronavirus

During November Suffolk Libraries have remained open for collection only until 2nd December. (Our Government have been persuaded that libraries are an essential service!)

- *Browsing will not be permitted unfortunately, but reservations and collections will continue and/or you can use the Select and Collect process to request a selection of books—email or phone the library. --*

- *Opening hours will be as usual.*

- *Computer booking for Universal Credit and other benefit usage only: contact the library*

- *It is compulsory to wear a face covering when visiting the Library. — Please complete the test and trace form on entry (or you can scan the QR code using the NHS app). Hand sanitiser is provided for your use, and please respect social distancing.*

- *Mobile library and home library services are suspended during the November lockdown.*

- *Book ahead to use a computer: phone or email the library; or just turn up. Printing, faxing and photocopying are also available.*

- *We have reintroduced charges for overdue items. This will only apply to items borrowed on or after Monday 5 October which are due back on 2 November onwards. Library loan periods will remain at four weeks.*

- *We have also reintroduced charges for DVDs.*

For free audiobooks, ebooks, films and other services, use your library card at www.suffolklibraries.co.uk

Opening hours:

Tuesday: 0930am – 1300pm Wednesday : 1500 – 1930pm

Saturday: 0900am – 1300pm Sunday: 1200 – 1600pm

School Corner, Debenham IP14 6PL

(next to the Primary School)

Tel: 01728 861940

Facebook: @DebenhamLibraryFriends

Email:

debenham.library@suffolklibraries.co.uk

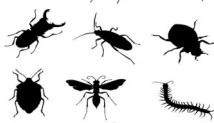


Gardening Tips to Help Nature



With vital insect numbers declining we can help by creating log piles. Save prunings from trees and shrubs. These will attract many insects and create safe hibernation spots for frogs and toads.

Leave stems of plants during Winter, the hollow ones play a vital role in sheltering hibernating insects. Resist cutting seed heads on plants such as teasels, *Verbenia Bonariensis* and sunflowers as these will attract 'charms' of Goldfinches and other seed eaters and help them survive the Winter temperatures.



It is tempting to clear all the Autumn leaves away, but you will be denying birds and insects an important food source. They harbour all sorts of life and form part of a decaying system that benefits the soil. If you do need to tidy areas such as lawns, bag them up and allow them to decompose into leaf mould. Gold Star compost for the borders and vegetable garden!

Wetheringsett Nature Lover

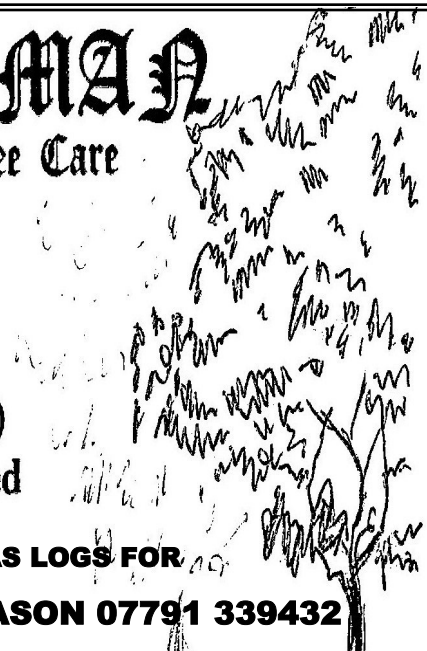
GREEN MAN Forestry & Tree Care

Horse Logging
Tree & Hedge Maintenance
Health Report & Advice
Tree Felling (*only as last resort*)
NPTC qualified - fully insured



JASON HAS LOGS FOR

Ring: JASON 07791 339432



Did you hear about the man who stole an advent calendar?
He got 25 days.

WETHERINGSETT PARISH COUNCILLORS

Parish Councillors

Cllr Charles Harvey	CHAIRMAN	Charles@the-harveys.org	
Cllr Elizabeth Cain	VICE CHAIRMAN	eccain@btinternet.com	
Cllr Mrs Ann Arnold		broadoaksuffolk@googlemail.com	01449 767781
Cllr Tony Alston		toyalston@hotmail.com	01449 766231
Cllr Barry Lacey		sally.lacey@btconnect.com	01728 860273
Cllr Mrs Elizabeth Aldred		aldred.sons@gmail.com	01728 860482
Cllr Mike Pease		mikepease@btinternet.com	
Cllr Mrs Hilary Green		greenhils291.1@gmail.com	
Cllr Mrs Sue Gibbs		suegibbsj10@hotmail.co.uk	01449 766735
Cllr Claire Estcourt		clairehestcourt@gmail.com	
Cllr David Brown		dsbwsettpc@gmail.com	01449 766151
<u>Parish Clerk:</u> Mrs Lynne Cockerton		lynnecockerton@btopenworld.com	01728 862001
<u>County & District Councillor :</u>		Andrew.Stringer@midsuffolk.gov.uk	01449 780339
Stowmarket Safer Neighbourhood Team		Stowmarket.snt@suffolk.pnn.police.uk	101 (non emergency calls only)



MOT testing in Wetheringsett at MPA

**All cars and light vans up to 3T
Testing by appointment**

Ring Michael to book your test

Tel: 01449 767070

**Classic car restoration,
service and repair.**



Email: mpaclassics@hotmail.com

Tel: 01449 767070

Unit 2, Old Station Yard, Station Road, Wetheringsett, IP14 5QJ
Next door to Mid Suffolk Light Railway Museum