



JULY 2021 NEWSLETTER



USEFUL CONTACTS

Parish website;

<http://wetheringsettcumbrockford.onesuffolk.net/home/>

VILLAGE HALL BOOKINGS ~ Sue Stannard 01449 767752

CHURCH WARDENS ~ Michael Churchill 01449 768869
~ Edward Gordon-Hall 07780 495851

WETHERINGSETT V C PRIMARY SCHOOL 01449 766215

Headteacher ~ Mrs Hookway Chair of Governors ~ Jo Pitt

PARISH TREE WARDEN ~ Elizabeth Aldred 01728 860482

TOWNLANDS TRUST ~ Lynne Cockerton 01728 862001

PARISH FOOTPATH WARDEN ~ Elizabeth Aldred 01728 860482

RSPCA Suffolk E & Ips branch ~ Ian Hendry 01449 767747

NON-EMERGENCY POLICE ~ Reporting, Info or Enquiries 101

MENDLESHAM HEALTH CENTRE 01449 767722

NEWSLETTER ~ Editor, Cally Buch 01449 766417

~ Adverts/Invoicing, Bernie Grindlay 07745 503967

~ Distribution, Sue & Eddie Payne 01449 767794

Email ~ wetheringsettnews@gmail.com

Contributions from the village community for inclusion in the newsletter are welcomed

Deadline for copy 15th of every month

DISCLAIMER

All adverts are placed in good faith, and the publishers cannot undertake responsibility for work carried out.

The opinions expressed in articles are not necessarily those of the editor. We cannot be held responsible for the accuracy of material submitted for publication; however, we reserve the right to include, edit or amend as we think appropriate.

The newsletter is produced in good faith but errors and omissions may occur during the process of production. Please let us know if this is the case so that any errors may be corrected in future editions.



Welcome to the July 2021 issue of your Newsletter

Now properly into summer, with hopeful indications that the normal pace of life is gradually resuming. It's wonderful to be able to report on activities in the village starting up again...keeping fingers crossed for - the re-opening of the village hall with a Centenary Tea Party; Sunday openings at the Middy and the Middy Café on Wed and Saturday mornings and our wonderful panto now in the planning stage ready for next February!

Enjoy July

Cally (Editor)

Thank you Clare

For over 10 years Clare Rogers has been at the hub of our weekly newsletter. Her role in managing the advertising and payments over this period has ensured that the newsletter has remained solvent and available to the parish.

Clare's role, like all others associated with the newsletter, is entirely voluntary and the hours she has given are much appreciated.

Clare is now stepping down from her role, and we welcome Bernie as her replacement. It has taken time for the accounts and information to be transferred and we are grateful that Clare has remained in position until this was achieved.

So once again thank you Clare, from all of us, for a job well done.



Dates for the Diary

July

Sunday 4th

Middy Land Rover Day

Sunday 25th

Middy Narrow Gauge Modellers' Day

August

Sunday 1st

Middy Tractor Club Day

Sunday 8th

Middy Vintage Bus Day

Debenham & District

Need help with your PC?

Friendly advice & training

Repairs & upgrades

No fix, no fee

Windows – Web – Email

Microsoft Word & Excel expert

Home network – WiFi – TV links

At your Home or Business

Phone Chris on

0757 069 5279

email: info@ubestree.co.uk

www.ubestree.co.uk

Domestic Appliance Repairs



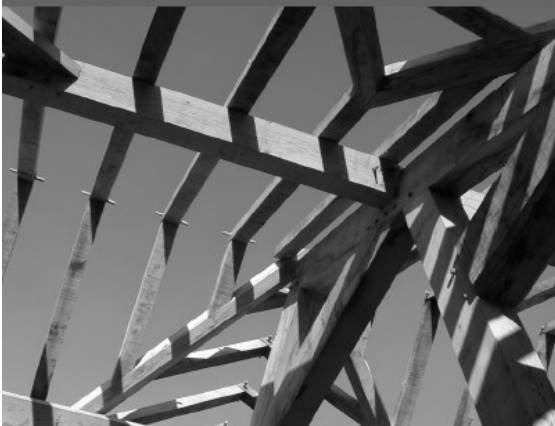
**For local, reliable service please call
Alan:**

**01449 613457
or 07508 051 518**

**WASHING MACHINE DISHWASHER
OVEN HOB TUMBLE DRYER**

Traditional Oak Carpentry

Conservation and Construction



New Homes
Extensions
Garden Frames
Structural Repairs
Historic Reports
Design Service

www.traditionaloakcarpentry.co.uk

01449 768817

Centenary Tea Party



Wetheringsett Village Hall 1921-2021

To celebrate the centenary of the Village Hall and (hopefully) the end of “lock down”, Wetheringsett Parish Council invite you to a tea party at the village hall on **Sunday, 29th August 2021, from 2pm to 5pm**

Further details to follow and please note that this event is subject to all COVID “lockdown” restrictions being removed.

The Cedars Pool:

We have had the busiest couple of months at the pool that we have ever had. The good weather has helped, but even during the colder, wetter times the regulars have persisted, as we keep the temperature 'warm'. Because of C19, our holiday carriages have been busier than expected, and they have been visitors to the pool, also. However, we have few people reporting times for 100 lengths!



Croquet: with the lawn now looking good, we are accepting challenges, even from those not sure of the rules - but do not expect to win!

Tennis: we usually see some activity around Wimbledon time, but not to that standard, but please come and have a go.

Contact: tonyalston@hotmail.com





With over 40 specialist auctions throughout the year such as antiques, paintings, vinyl, jewellery & watches, furniture, ceramics, toys, advertising & automobilia, coins & militaria. Full details on our website or contact us to find out more!

WWW.BISHOPANDMILLERAUCTIONS.CO.UK

19 Charles Industrial Estate
Stowmarket
Suffolk
IP14 5AH
01449 673088
enquiries@bm-auctions.co.uk

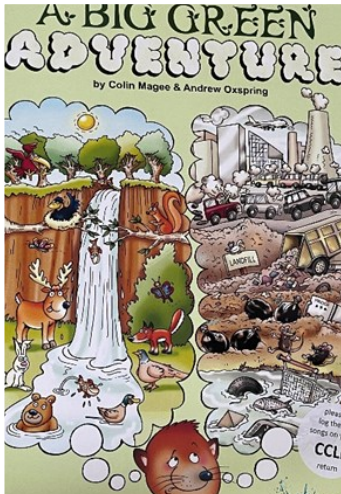


July 2021



This lovely hot weather has helped our new garden beds to blossom. We have got a range peas, strawberries, potatoes, beetroot, tomatoes, butternut squash and beanstalks growing.

The children have been taking great care of the plants watering and weeding the beds during lunchtime gardening club.



Rehearsals have started for the end of summer production and preparation for sports day. Unfortunately due to the current announcement these will be very different. The production is called 'A big green adventure'. This year the production will be filmed due to the current Government guidelines.

Yours sincerely,
Mrs Sheeran



Neighbourhood Plan Update, June 2021

- Locality Funding agreed for 2021/2022.
- Work on the Design Code has begun – will be undertaken by consultants AECOM and funded by Locality – draft due in September 2021.
- Work on the Housing Needs Assessment has begun – will be undertaken by consultants AECOM and funded by Locality.
- Steering Group Meeting held on 7th June to identify some early policy ideas – following the feedback from the questionnaire in the Newsletter.



1st public consultation event – to be held in September –
16th and 17th September. Drop-in exhibition at the Village Hall

All welcome to come along.

ADVERTISING RATES

for the Wetheringsett-Cum-Brockford Newsletter

A5 Full Page	11 Issues - £ 100.00	5 Issues - £ 50.00
A5 Half Page	11 Issues - £ 50.00	5 Issues - £ 25.00
A5 Quarter Page	11 Issues - £ 40.00	5 Issues - £ 20.00
Back cover	11 Issues - £ 150.00	5 Issues - £ 75.00

RING Bernie Grindlay on 07745 503967
bernadette.grindlay@skycom

WE WELCOME NEW ADVERTISERS

Ipswich Mobile Library Route 7

7H	<i>Brockford St</i>	<i>Old Griffin</i>	1245 – 1300
7I	<i>Wetheringsett</i>	<i>Hockey Hill</i>	1405 – 1420
7J	<i>Wetheringsett</i>	<i>Wetherup St</i>	1430 – 1445
7K	<i>Wetheringsett</i>	<i>Park Green</i>	1450 – 1505

Email: help@suffolklibraries.co.uk

Telephone: 01473 263838

Calling every 4 weeks on **Thursdays**

Next visits: Thursday 1st July, Thursday 29th July

Curtains Up are returning!

Well, it has been a long time since we have been able to give you any news regarding the Drama Group, so it's lovely to *set the scene!!!* Here's the latest: - We had our first meet-up on a sunny evening outside on the meadow. It was good news - we plan to put on our next Pantomime in FEBRUARY 2022.

(The group will of course be following all Government guide lines as required)
Watch out for the **Big Reveal** telling you which Pantomime we will be performing.

Apart from the Pantomime, the group plan to bring back our
Play and Supper Evening.

We will update you later with details of these events

We rely very much on people to put on production there are many other back-stage: - Scenery; Props; Refreshments; Costumes; Programmes; Box Office— the list goes on.



the help and back up of many people as, apart from the cast, necessary jobs, especially

We are looking for anyone who would be interested in helping us on the Technical side especially with Lighting.

We would like to take thank Shaun Easter down from this role. have done in your time lighting but helping to



this opportunity to who has decided to step Thank- you for all you with us not only with make flour blowing ma-

chines to the bow of the titanic and more! You will be missed.
Also anyone interested in working Front of House ie refreshments/ selling programmes.

Please get in touch with Sue Stannard on 01449 767752
We will be very happy to hear from you and you will be made very welcome.

*“Thanks to Rosedale,
I now feel closure and
a sense of peace, after
all the upheaval of
recent weeks.”*

– from a family we have
cared for at Rosedale



- BEREAVEMENT SUPPORT GROUP •
- ADVICE ON FUNERAL GRANTS •

The Rosedale Funeral Plan enables you
to select and pay for the arrangements of
your choice at today's prices.



Rosedale
FUNERAL HOME



Victoria Road, Diss **01379 640810** (24hrs)

www.rosedalefuneralhome.co.uk

GEOFF NICHOLLS & CO
SPECIALISTS IN
PERIOD PROPERTY
RESTORATION

renovation work, all repairs,
alterations, conversions,
roofing, decoration etc.

Quality work guaranteed



Bacton.
(01449) 781375

Complete Building Service

Vince Plumbing and Heating

Gas Boilers and Heating, Bathrooms, Kitchens,
and Plumbing.

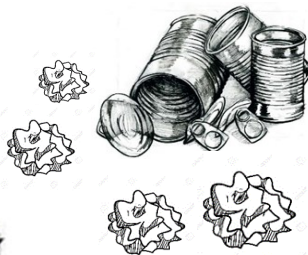
Justin Vince

07585081787

vinceplumbingandheating@gmail.com



COMMUNITY LITTER PICK



Deferred now until next year - with apologies to all those intrepid folk who turned out ready and willing on 12th June

Due to a communication breakdown our litter picking equipment wasn't available when we were!

The opportunity for sighting any litter lurking in the verges and hedgerows has now passed and so we will re-convene after the winter months, when the plant growth has died back.

It has to be noted though, that there does not appear to be as much litter around as in past years ...perhaps an unexpected minor benefit of this year's lock-downs?

Thank you everyone who turned out 'to-pick'!

Michael Brame

60 Pretyman Avenue, Bacton, IP 14 4NY

"A" rated UPVC windows, doors and conservatories with 'A' rated installation 'C' rated prices

Complete replacement of fascias, soffits, guttering and downpipes

Needing quotes for any of the above?

Contact Michael on

01449 781533 mob. 07931 784470

SHORT STORY COMPETITION

Kindly sponsored by Brockford Services

Lawn Mower Servicing



Garden machinery
repair

Collection and delivery
available

07818 438004

www.brockfordservices.co.uk

The winner in the adult section was
Mat Rosen and you can read his winning
entry on page 13



We will be publishing the
other highly commended
entries in the next few
issues.

Some good reading here!

This is Isla, our junior
winner, with her £25
book token prize

SHORT STORY COMPETITION *Winning entry by Matt Rosen*

Peter was a grizzly with a thick Dutch accent. Nearly 30 years obscures the precise details of his face, but if we were to meet again, I would recognise him. Behind his dark eyes there was an unhinged intensity, like the pieces inside didn't quite fit together. His hair, dark with grey slivers, was pulled back into a ponytail. He was not comfortable to work with, growling blame if mistakes were made and it was always my fault; but he paid me, without fuss, at the end of each week.

We'd been introduced by a mutual friend, Josh. I'd moved to Berlin and was looking for a job, he needed an assistant. The previous one had stopped showing up. It was an early start, and in the months leading up to winter, increasingly bitter.

Natalie and I resided in an inner courtyard flat, just over the steel latticed road-bridge and behind Schloss-Charlottenburg. It took nearly an hour to get to the flats where he lived. I was only once invited up, and briefly met his wife; normally, after ringing the bell, he'd come down. Then we would drive to wherever the work was, collecting materials on the way. Conversation took some time to warm up and it was uneasy until the work started: I think he enjoyed teaching me the practical skills, from plumbing to carpentry, although most of my work was heavy lifting.

Over Christmas, he, his wife and two children were taking the ferry to England, to visit her family. In the new year Josh called me: Peter had left Berlin and gone back to Holland with his children. A sudden aching interruption of continuity: On the night crossing, his wife had gone for a walk and jumped into the cold black sea.

judges comments ..

The character of Peter was intriguing and cleverly drawn. There were some great phrases; "unhinged intensity" and "aching interruption of continuity", and this story had the punchiest ending. Although it was a difficult choice, I would select this as the winner, because the questions that remained about Peter and his wife stayed with me after I'd read the entry. Why did she jump into the sea?

I thought the descriptive writing in this was excellent. I have never been to Berlin but I had a picture in my mind of what it is like - the steel latticed road bridge, the bitter winter and living in a flat. I found these images preying on my mind over quite a few days, particularly the end although I thought that a bit more could have been made of this - more tension. It was also a bit dark in these dark times and I was hoping more uplifting entries could be received.

TAYLORMADE KITCHENS

BEDROOMS ~ BATHROOMS



Traditional to Ultramodern

Standard sizes or Bespoke
(Plywood carcass option)

Graite, Quartz, Timber, Corian
or Laminate worktops

Most makes of appliances

Built-in wardrobes

Large range of bathroom
suites and showers

Professional, Meticulous Installations or supply only

Tel: 01728 860856 Mob: 07860 602317 ~ taylormadekitchens.neil@gmail.com

S. C. CLIFFORD

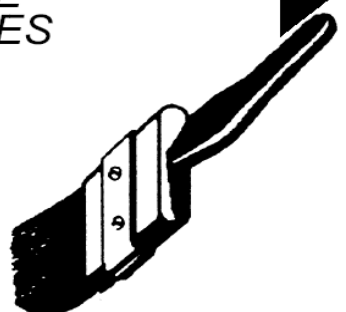
PAINTER & DECORATOR

• INTERIOR/EXTERIOR • PRIVATE & COMMERCIAL

9 Stowmarket Road
Stonham Aspal
Stowmarket
Suffolk IP14 6AB

FREE
ESTIMATES

Tel: STOWMARKET (01449) 711369





Mid-Suffolk Light Railway Museum

01449 766899

www.mslr.org.uk

Brockford Station, Wetheringsett, IP14 5PW

Steam Railway Days 4th, 11th, 18th July

Openings during the extended coronavirus restriction period at the MSLR

The Middy programme of Sunday openings during June and July will continue until the next release day 19th July as now and visitors will need to buy their tickets online at the Middy [website **www.mslr.org.uk**](http://www.mslr.org.uk)

So far this has been remarkably successful with no loss of visitor numbers and everyone coming to the Middy well aware of what is now required in terms of social distancing, queuing and following routes around the site.

Our Events team have worked extremely hard to make things as normal and welcoming as possible and visitors can be reassured that we have our proper 'Good to Go' accreditation and the site and carriages are sanitised to required standards. Then we hope to continue, all being well, with our programme for the rest of the summer and into September.

Steam Railway Days at the Middy will, of course, feature steam train rides in genuine Victorian 4-wheel coaches and visitors will be able to have as many trips as they like, subject to the social distancing rules currently in place. The Museum will also be open together with the souvenir shop and the refreshment room, now under new management with a substantially extended menu.

Visitors will also be able to see the progress at Dovebrook where the new footbridge over the brook to the picnic area is now complete and operational. It is also possible to see the recent the additional track installed earlier this year as part of the extension project, and further work is expected soon.

Adults £10.00, children under 16 £5.00, under 5s free.

First train 10.30a.m

For more information visit www.mslr.org.uk or contact John Reeve 01986 798019 or [email \[marketing@mslr.org.uk\]\(mailto:email_marketing@mslr.org.uk\)](mailto:email_marketing@mslr.org.uk)

Middy Café

now open to the local community on Wednesday and Saturday mornings 9am—1pm (when the railway volunteers are there) plus Friday evenings 6 to 9pm; all for tasty takeaways!



South Hartismere Benefice Recovery Worship Rota

*For services held in church and online
(subject to change due to government guidance)*

July 2021

Thursday 1st July

Telephone Church BCP Holy Communion 11.00am

Week 1

Sunday 4th July
The 5th Sunday after Trinity

No On-line Worship
Gislingham 10.30am Holy Communion
Thorndon 10.30am Worship for All

St Edmundsbury Cathedral
Ordination of the Revd. Lauren Moore
Live streamed on the Cathedral Facebook page at 2pm

Wednesday 7th July
Thursday 8th July

Mid-week Worship On-line 7.00pm
Telephone Church BCP Holy Communion 11.00am

Week 2

Sunday 11th July
The 6th Sunday after Trinity

No On-line Worship
Mellis 10.30am Benefice Holy Communion

Wednesday 14th July

Gislingham 7.00pm Licensing of Debbie Nicholls as Lay Pioneer Minister

Thursday 15th July

Telephone Church BCP Holy Communion 11.00am

Week 3

Sunday 18th July
The 7th Sunday after Trinity

On-line 9.00am Worship for All
Thornham Parva 10.30am Holy Communion
Wetheringsett 10.30am Worship for All
Mellis 4.00pm Hedgerow Celebration refreshments
(subject to guidance)
Mellis 5.00pm Hedgerow Celebration service

Wednesday 21st July
Thursday 22nd July

Mid-week Worship On-line 7.00pm
Telephone Church BCP Holy Communion 11.00am

Week 4

Sunday 25th July
The 8th Sunday after Trinity

On-line 9.00am Worship for All
Yaxley 10.30am Holy Communion
Thornham Magna 10.30am Worship for All

Wednesday 28th July
Thursday 29th July

Mid-week Worship On-line 7.00pm
Telephone Church BCP Holy Communion 11.00am

Contact:



Reverend Canon Julia Lall - Rector
rev.julialall@gmail.com 01379 678064

Reverend Lauren Moore – Curate
rev.laurenmoore@gmail.com 07798705876

<https://www.facebook.com/groups/SouthHartismereChurches/>

South Hartismere Benefice

July 2021 Newsletter



Ministry in our churches

Although lockdown has been a difficult time for us, and we were saddened to have closed our churches at a time when people needed somewhere to turn to, this time has led to people thinking about their calling to serve in our churches as part of our growing ministry team.

In January we appointed Emma Morris as a Schools and Families worker to help with our ministry to the four Church of England primary schools, and to help strengthen our links between church, school and home.

At the end of May three new Lay Elders were commissioned by Archdeacon Jeanette, and 2 Lay Elders were recommissioned to assist with pastoral care and leading worship.

In July we are pleased to welcome Debbie Nicholls who will be living in Gislingham and will be a Licensed Lay Minister working in the community. In June 2022, subject to the completion of her training Debbie will be ordained as a full-time curate and will continue to minister within the community with a focus on school, families and youth.

At the beginning of July our self-supporting Curate, Revd Lauren Moore will be ordained priest in St Edmundsbury Cathedral, and will continue to minister among us.

These new ministries, - combined with the ministry of Revd Dr Alan Harding, and our two Readers, Peter Neale and Jean Archdeacon - will strengthen our ability to serve our communities more effectively and increase our visible presence.

If you feel that God may be calling you to serve in any of our churches do please get in touch with me, or anyone on the ministry team for an informal chat. We would love to hear from you.

Blessings,
Julia

News from the parishes:

In Loving Memory: Margaret Scuffham, Mellis; Barbara Newman, Stoke Ash

Art Exhibition

SARA MACIVER

J Parker Studios
16a Red House Yard
Gislingham Road
Thornham Magna
IP23 8HH



THE ART OF LOCKDOWN

Featuring
watercolour/acrylic
collages and
original oils.

PRIVATE VIEW
FRIDAY 2ND JULY '21
7PM – 9PM
ALL WELCOME

OPEN DAILY
3RD – 9TH JULY '21
10AM – 4PM

Stenning Photographic



Portraiture, model portfolios
Commercial/Industrial Photography
email: stenningphotographic@gmail.com
www.michael-stenning.format.com

Optimal Heating

Father & Son Team
with over 30 years experience

Specialist Heating Engineers
Oil, Natural Gas & LPG Servicing and Repairs



Tel: 01728 628687
Mobile: 07806 660399



A Wildlife Conservation Project, Pitmans Corner

We live on the unmade track/footpath (locally called 'Clay Lane') off High Lane, Pitmans Corner. The track is 'unadopted' meaning that the Highways Authority does not have responsibility for its upkeep. Instead, we, as residents, acknowledge our responsibility to contribute to the upkeep of the unmade track and footpath which gives access to the residential properties and the verges and ponds at its edge.

With other residents, some of whom have already been involved in clearing the area with us for the past two years, we are working on the verges not only to maintain them but to try to conserve and improve their biodiversity. We have also sought advice from the Suffolk



Wildlife Trust. It has been pleasing to see that the work along this tranquil track has been noticed by the many walkers who use it. We have erected two little explanatory noticeboards for the information of those who pass by.

One section of the lane has already been tended and planted with bee-friendly plants and wildflowers. A further section is mainly grass but is being left uncut to allow native

plants to grow and with locally sourced wildflower seeds introduced. The old water pump here has been reinstated having been found in pieces. We are clearing a large section (at the High Lane end) of pernicious weeds, to try to ensure that conditions are favourable for colonisation by wild plants and enabling existing ones to flourish.



Continued over page ..



..continued

At the same time, we are leaving log shelters and have constructed a bat box, etc, to support and encourage the development of local fauna. We have been pleased to see inquisitive ducks and moorhens arrive.



We count ourselves fortunate to have the opportunity of undertaking this small wildlife conservation project. However, whilst the Highways Authority is normally legally responsible for managing roadside

verges, there are ways in which we can all become more involved in making sure our verges thrive – see, for example,

<https://plantlife.love-wildflowers.org.uk/roadvergecampaign>

Mike and Paula Laycock, 'The Cherries', Pitmans Corner



**Amanda
Polley**

Swimming Lessons

Private one-to-one swimming lessons nr Wetheringsett

For all ages and abilities

30 min sessions

Available on weekday evenings and weekends

Experienced, STA Qualified, CRB checked and Insured

Call **07910 376 906** or

Email **theswimteacher@yahoo.com** for details



It's a Dog's Life

Hello everyone...
exciting news! I've been on holiday!
I have to say there seemed to be an awful lot of fuss for just a few days away...as long as I had my bed,

food and had selected a favourite toy (I took particular care with this...in the end squeaky Santa was chosen) what else is there to do?

To be perfectly honest I'm not a fan of car journeys. I think they forget that even though I'm extremely smart I really have no concept of time so are we going to be in the car an hour? A day? FOREVER?!?

I make a point of doing a great deal of shaking and looking pathetic so that frequent stops are made for my comfort and convenience.

Eventually we arrived in Yorkshire. We were staying with friends of mum and dad's who I am particularly fond of so that was exciting...I knew I could guarantee plenty of attention!

We had lots of nice walks that seemed to always end up at the pub...funny that...and I met some guinea fowl; very strange things indeed!

I have to say I found the whole experience very relaxing and restful, just what I needed.

Now for a snooze...



Border Collie working from home





Wetheringsett Manor

ACORN

Better days, Better lives

Wetheringsett Manor School is now opened to pupils.

Unfortunately, due to COVID, we regret that we have been unable to show residents and others around the school after the refurbishment but hope that this is something that will be able to go ahead in the future.

If you require further information call: - 01449 703935

News from Wetheringsett Manor School

The pupils have now started on the allotments and once we have grown some vegetables we will be selling them at the end of the drive.



Starting work ..!



Peaceful corner with more insect 'Desirable Residences'!



Looking after the insects ..



Ready to go ...!

Wetheringsett cum Brockford Parish Council

Report on the meeting held 7 June at the Village Hall, Wetheringsett

Parish Council meeting: This was the first face to face meeting Council Members have been able to hold for just over a year, it was a fine a warmish evening so the meeting was held outside on the school field. Thanks were recorded to Cllr Mike Pease for hosting the video meetings over the last year. Going forward live meetings will now be held on the usual first Monday of the month at the Village Hall and as usual members of the public are very welcome to attend.

Planning Application DC/21/04921: land east of Hockey Hill – this application had been re-submitted for comments following a new flood report on the site. Members gave the application due consideration and reiterated their recommendation of refusal on the same grounds: lack of infrastructure to accommodate the additional dwellings, loss of garaging and parking spaces in Hockey Hill and the surface water flooding issues.

Planning Application DC/21/03108 & 03109: Town Lane Farm, Town Lane – Renovation of a 3 bay garage to create living/guest wing etc and erection of a detached 6 bay cart lodge to west boundary. Members gave this application due consideration and a recommendation of refusal was recommended on the grounds the proposal appeared to be overdevelopment of the site next to and in the grounds of a listed building.

Village Event – Cllr Pease gave a report on the celebration event to be held on Sunday 29 August 2021 on the Village Hall field – an opportunity for the village to get together after the last year. The Parish Council has donated £500 towards the event, the sound system purchased with funds donated by District Cllr Andrew Stringer will be available for use. Our Council Members are looking forward to hearing about the activities that will be taking place.

VAS equipment – a request had been received to re-site the VAS equipment when located in Brockford Street so as to monitor traffic speed travelling north as it enters the 30pmh limit. A resident believed speed at that point was in excess of the speed limit. Cllr Harvey would look into whether that particular site met the VAS requirements.

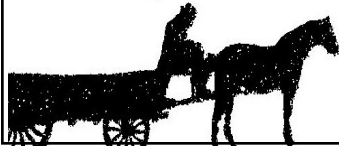
Parish Council Vacancy – the current vacancy is available to be filled by co-option. Any parishioner, 18 years and over is eligible to join the council. Please speak to a councillor or clerk if you think you may be interested.

Date of next meeting: Monday 5 July 2021, 7pm at the Village Hall, Wetheringsett.

GREEN MAN

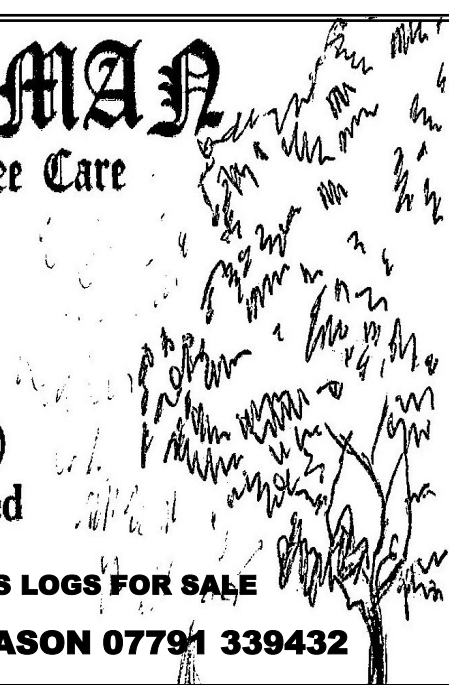
Forestry & Tree Care

Horse Logging
Tree & Hedge Maintenance
Health Report & Advice
Tree Felling (*only as last resort*)
NPTC qualified - fully insured



JASON HAS LOGS FOR SALE

Ring: JASON 07791 339432



RUST IN TIME

Lovingly created in steel that will
"Rust in time" for many years throughout the
changing seasons



FACEBOOK
@rustintimesuffolk

EBAY
seller:rustintimesuffolk

WEBSITE
www.rustintime.com

Snippets from the Village History: **Foundation of the School cont. ...** **School Building**

1865 Dimensions of school as recorded in the log book:

	Length	Breadth	Height
Recess	45ft	10ft	14ft
Main Room	20ft	16ft	15ft
Classroom	18ft	12ft	15ft

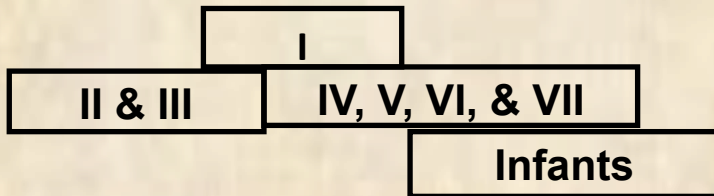
In 1900 the Log Book records that there was still one large room and one small room for older scholars with a separate room for infants. In the infant's room there was a small gallery and in 1902 this was removed to give more room.

During 1902 alterations were made in school—most of the windows were enlarged. This was duly reported in the Hartismere Deanery magazine:

May 1902

During the holidays considerable alterations have been made in the lighting of the school by the enlargement of most of the windows in accordance with government requirements. A great and much needed improvement has thus been effected. Two new windows have also been put in the School House and new furniture added. This work has involved considerable outlay. The Managers do not know whether they will have to make a general request to the parishioners for further contributions, but I shall be glad if all annual subscribers will take an early opportunity of sending their subscriptions to me, as the work must be paid for in the year that ends next month.

Later in 1902 an extra classroom was put on—built by Mr Thos Miles of Thorndon. The plan as follows:



According to our parishioners a house to house collection was made to help defray expenses

More next month

DIGITAL

copycentre

For All Your Copying



1992 - 2017

Digital Laser Colour Copies
Plan Prints to A0 size
Booklet - Magazine Printing
Laminating to A2 size

We print from E-mail, CD
Memory stick, or hard copy

EXCELLENT RANGE OF
COLOURED PAPER AND CARD
DOCUMENT COMB BINDING

Email: info@digitalcopycentre.co.uk

37 Stowupland Street, Stowmarket, IP14 1EG

01449 678100

Creative Silk Painting

Book yourself on a day course to learn the Art of Creative Silk Scarf Painting

No experience necessary & beginners are very welcome.

Booking is essential These are small workshops allow for individual tuition, Based in Pages Green.

Workshop Days are 10am~3pm, cost £45

Be Inspired, Get Creative, Have Fun

Various dates available, Please see website for dates or call Ruth ...

Call to book your place...

01728 861899

theartysilkworm.co.uk



Take the right direction with expert financial advice

I provide a comprehensive wealth management service, offering specialist face-to-face advice tailored to you. My services include:

- Investment Planning
- Retirement Planning
- Inheritance Tax Planning
- Intergenerational Planning

For further details please contact:



Amanda Dossett

T: 01449 768768 | M: 07808 549876

E: amanda.dossett@sjpp.co.uk

W: www.amandadossett.co.uk



Cleaning
and
Gardening Services

Friendly team who provide an excellent
cleaning and gardening service

Wetheringsett, Brockford, Mendlesham
and other IP14 areas

Kitchens

Bathrooms

Hoovering

Polishing

Holiday Let Change Over

End of Tenancy

Garden Maintenance

Mowing

Trimming

Please get in touch for availability
Email karinathacker1@gmail.com
or
Phone 01449 767731



"Fast, efficient and thorough
- highly recommended"
The Cartledge A140



Willow Upholstery

Meeting all your upholstery needs!

**Serving Debenham, Eye, Diss, Stowmarket, Ipswich
and surrounding villages**

- Modern and Traditional upholstery
- Repair and Restoration of wooden frames
- Re-cover and Loose Covers
- Headboards
- Ottomans and Footstools
- Lampshades
- Cushions
- Notice boards

**Please call me, I'd love to hear from you!
M: 07394 544588**

**Or browse my website
W: Willow-upholstery.com**

Providing Personal Care in your own Home



**Recruiting
NOW!
We need
exceptional
people who
love to
care**

Do you need help with:

Personal Care
Dementia Care
Respite Care
Help Around the
House
Day Trips Special
Occasions

**Request a
Brochure or book
an appointment
on 01449 763086
or 01284 711845**



We only employ people who love to care.

 **MyCare
at Home**

Supporting Independent Living

www.mycare-at-home.co.uk



BEV & KIRSTY

FORMERLEY CURL UP & DYE

**WE ARE BOTH FULLY QUALIFIED WITH OVER 40 YEARS
OF EXPERIENCE BETWEEN US**

PROFESSIONAL ADVICE AND PERSONAL ATTENTION

IN ALL ASPECTS OF HAIRDRESSING

PERMS: COLOURS: HI-LITES: CASUAL PUT-UPS WEDDING HAIR: RESTYLES Etc

FOR ALL THE FAMILY AT UNBEATABLE PRICES

SENIOR CITIZEN RATES TUESDAY ONLY

EAR PIERCING AVAILABLE

EASY OFF ROAD PARKING

LOYALTY CARD, STAMP EVERY SERVICE

ALL DEBIT/CREDIT CARDS ACCEPTED

GIFT VOUCHERS AVAILABLE

FOR ALL ADVICE AND APPOINTMENTS

D.I. ALSTON LTD THE CEDARS BROCKFORD

20ft Containers for self storage:

£100/month inc VAT

We can also store your caravan on hardstanding.

Enquiries: 07788 974169

To let:

OFFICES AND WORKSHOPS ALSO

HOLIDAY ACCOMMODATION

AT BROCKFORD RAILWAY SIDING

Tel: 01449 766231

tonyalston@hotmail.com

CHIMNEY SWEEP



ECO SWEEP

CHIMNEY SERVICES



- POWER SWEEP METHOD USED FOR A MORE THOROUGH CLEAN THAN A BRUSH
- FULLY INSURED
- INSURANCE RECOGNISED CERTIFICATES ISSUED ON EVERY SWEEP
- GOLD MASTER MEMBER OF GUILD OF MASTER CHIMNEY SWEEPS
- ALL CHIMNEYS, WOOD/MULTI FUEL BURNERS, AGA, BOILER FLUES SWEPT
- BIRD GUARDS FITTED

TEL: (01359) 232335

EMAIL: ecosweep@live.com



Do you need help
with Babysitting
or Ironing?

My name is Georgie

I'm a Year 11
student and I am looking for
work.

If you need any
ironing done or
babysitting,
please give me a
call or text me

on

07541 834453

You can also email -

georgiebullock12345@gmail.com

Thank you



Covid quotes:

It's been a great blessing to be at home with the wife these past few months. We've caught up on everything I've done wrong in the past 20 years.

Friends of Debenham Library

See www.suffolklibraries.co.uk/coronavirus for the latest details

Our shelves are full, so why not come and take some books out? We are open for browsing, computer use, printing and collecting reservations. We are now open until 7.30pm on Wednesday evenings.

Outside the library on the wall of the school hall there are four new swift boxes—we hope to see some occupants soon! The garden is looking good too.

We hope to resume films and other events when circumstances permit, hopefully in the Autumn.

For free audiobooks, ebooks, films, newspapers/magazines and other online services, use your library card at www.suffolklibraries.co.uk. There are also podcasts and videos available on the YouTube channel (SuffolkLibraries).

Opening hours:

Tuesday: 0930 am – 1300 pm Wednesday : 1500 – 1930 pm
Saturday: 0900 am – 1300 pm Sunday: 1200 – 1600 pm

Tel: 01728 861940

School Corner, Debenham IP14 6PL (next to Primary School).

www.suffolklibraries.co.uk/visit/locations-and-times/debenham-library

Facebook: @DebenhamLibraryFriends

Email: debenham.library@suffolklibraries.co.uk

The logo for 'Boots n Blades' features the words 'Boots' and 'Blades' in a white, bold, sans-serif font, stacked vertically. A vertical line separates the two words, and a small 'n' is positioned between them. The background is a dark green square.

GARDEN MACHINERY SERVICE & REPAIRS.

SPRING INTO ACTION IN YOUR GARDEN

WE NOW HIRE GARDEN MACHINERY OUT FOR THOSE ONE OFF JOBS.

ROTOVATOR, SCARIFIER, POST HOLE BORER AND LOTS MORE

Open Mon - Fri 9am-4pm, Sat 9am - 12pm

Closed Sundays and Bank Holidays

6A MEADOW WORKS BUSINESS PARK, DEBENHAM. IP14 6RP. TEL 01728 860330 EMAIL karen@bootsnblades.co.uk

FOLLOW US ON TWITTER @BOOTSNBLADES AND FACEBOOK BOOTSNBLADES DEBENHAM

WETHERINGSETT PARISH COUNCILLORS

<u>Parish Councillors</u>			
Cllr Elizabeth Cain	CHAIRMAN	eccain@btinternet.com	
Cllr Mrs Ann Arnold	VICE CHAIRMAN	broadoaksuffolk@googlemail.com	01449 767781
Cllr Charles Harvey		charles@the-harveys.org	
Cllr Tony Alston		tonyalston@hotmail.com	01449 766231
Cllr Barry Lacey		sally.lacey@btconnect.com	01728 860273
Cllr Mrs Elizabeth Aldred		aldred.sons@gmail.com	01728 860482
Cllr Mike Pease		mikepease@btinternet.com	
Cllr Mrs Hilary Green		greenhills2911@gmail.com	
Cllr Mrs Rachel Leech		rachelleech67@btinternet.com	
Cllr Claire Estcourt		clairehestcourt@gmail.com	
Cllr David Brown		dsbwsettpc@gmail.com	01449 766151
<u>Parish Clerk</u> : Mrs Lynne Cockerton		lynne.cockerton@btopenworld.com	01728 862001
<u>County & District Councillor</u> :		Andrew.Stringer@midsuffolk.gov.uk	01449 780339
Cllr Andrew Stringer		Stowmarket.snt@suffolk.pnn.police.uk	101 (non emergency calls only)



**MOT testing
in Wetheringsett at MPA**

**All cars and light vans up to 3T
Testing by appointment**

Ring Michael to book your test

Tel: 01449 767070

**Classic car restoration,
service and repair.**



Email: mpaclassics@hotmail.com
Tel: 01449 767070

**Unit 2, Old Station Yard, Station Road, Wetheringsett, IP14 5QJ
Next door to Mid Suffolk Light Railway Museum**