

JULY 2023 NEWSLETTER



USEFUL CONTACTS

Parish website;

<http://wetheringsettcumbrockford.onesuffolk.net/home/>

VILLAGE HALL BOOKINGS ~ Sue Stannard	01449 767752
RECTOR ~ Rev. Julia Lall	01379 678064
PCC SECRETARY ~ Emma Morris	01449 766117
ADMINISTRATIVE CHURCH WARDENS	
~ Tim Rowe	07775 872742
~ Edward Gordon-Hall	07780 495851
WETHERINGSETT V C PRIMARY SCHOOL	01449 766215
Executive Headteacher ~ Imogen Wallis	
Head of School ~ Samantha Sheeran	Chair of Governors ~ Jo Pitt
PARISH TREE WARDEN ~ Elizabeth Aldred	01728 860482
TOWNLANDS TRUST ~ Lynne Cockerton	01728 862001
PARISH FOOTPATH WARDEN ~ Elizabeth Aldred	01728 860482
RSPCA Suffolk Central ~ Ian Hendry	01449 767747
NON-EMERGENCY POLICE ~ Reporting, Info or Enquiries	101
MENDLESHAM HEALTH CENTRE	01449 767722
NEWSLETTER ~ Editor, Cally Buch	01449 766417
~ Adverts/Invoicing, Bernie Grindlay	07745 503967
~ Distribution, Sue & Eddie Payne	07857 686067
Email ~ wetheringsettnews@gmail.com	

DISCLAIMER

All adverts are placed in good faith, and the publishers cannot undertake responsibility for work carried out.

The opinions expressed in articles are not necessarily those of the editor. We cannot be held responsible for the accuracy of material submitted for publication; however, we reserve the right to refuse inclusion; to edit or amend as we think appropriate.

The newsletter is produced in good faith but errors and omissions may occur during the process of production. Please let us know if this is the case so that any errors may be corrected in future editions.

Welcome to the
July 2023 issue of your
Newsletter



Well, we've had the Summer Solstice and unbelievably the nights are now officially 'drawing in!' July is the warmest month in the Northern Hemisphere on average. ...although last month was the hottest June on record!

July brings Wimbledon and seasonal strawberries; barbeques and, for the USA, the celebrations of 4th July.



We had some lovely memories last month of the 'Cat and Mouse', (Thank you, Tony Proctor). It would be really good to hear of any other recollections of the village that you have so that we can include them in the newsletter. Contact details opposite. With the school holidays to look forward to ..

Enjoy your month

Cally (Editor)

Dates for the Diary

July

Monday 3rd	Parish Council Meeting 7pm
Friday 7th	School Sports Day
Saturday 8th	Middy Market 10am —2pm
Saturday 22nd	Debenham Shed
Friday 28th	Last day of school term
Monday 31st	Last day to vote on Neighbourhood Plan (p.10)

Contributions from the village community for inclusion in the newsletter are welcomed

Deadline for copy 15th of every month

*Advertise
here*

See page 30 for details

*“Rosedale really do make
an emotional time more
bearable and your care
and concern shines
through all you do.”*

– from a family we have
cared for at Rosedale



We are a family business and promise to
provide exceptional care and a truly personal
24hr service, when you need it most.



Rosedale
FUNERAL HOME

Victoria Road, Diss **01379 640810**

Exchange Street, Harleston **01379 853999**

www.rosedalefuneralhome.co.uk

Michael Brame

60 Pretyman Avenue, Bacton, IP 14 4NY

**“A” rated UPVC windows, doors and conservatories
with ‘A’ rated installation ‘C’ rated prices**

**Complete replacement of fascias, soffits,
guttering and downpipes**

Needing quotes for any of the above?

Contact Michael on

01449 781533 mob. 07931 784470



SPEEDING

At the Parish Council meeting on 5th June, two parishioners expressed their concerns over the amount of speeding in both Wetherup Street and Park Green, in particular during early morning dog walks. Something I experienced first-hand at 7:45 on 9th June when about to step onto Wetherup Street from the footpath when a large, brown SUV narrowly missed me and my dogs. It was travelling well in excess of 30mph and probably over 40mph. Having looked after the VAS speed sign for the past 6 years, I have developed a good sense of the speed of cars.

According to ROSPA, pedestrians are 3.5 to 5.5 times to suffer a fatal accident when hit by a car travelling between 30 and 40mph, but for people who doubt that statistic, the basic fact remains that the faster a car is travelling when it hits a person, the greater the injuries and likelihood of a fatality.

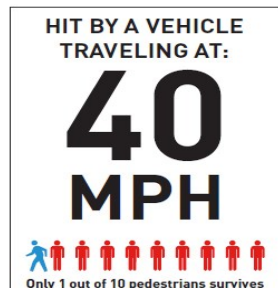
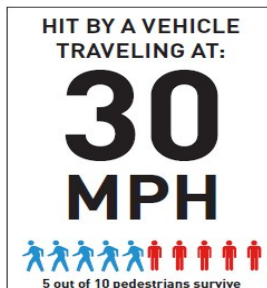
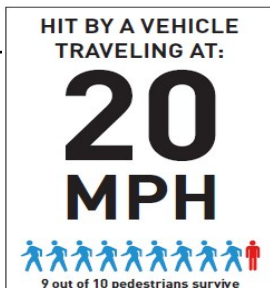
The VAS data reports that only 36% of drivers drive within the speed limit in Park Green and Wetherup Street and there is no way of knowing whether the speeding drivers are residents in the parish, or not. Sadly, it will likely take that fatality before the Police take an interest.

So, will that fatality be one of the early morning dog walkers, one of our elderly residents taking a stroll, a child or a jogger? And will it be an SUV, van, car, resident, non-resident, grey, silver, brown, petrol or a quiet electric car?

As residents, we can do our bit to reduce that risk and keep within the speed limits.

Cllr Harvey

Wetheringsett-cum-Brockford Parish Council



Debenham & District

Need help with your PC?

Friendly advice & training

Repairs & upgrades

No fix, no fee

Windows – Web – Email

Microsoft Word & Excel expert

Home network – WiFi – TV links

At your Home or Business

Phone Chris on

0757 069 5279

email: info@ubestree.co.uk

www.ubestree.co.uk

Laura Beardsell-Moore
Fine Art

Animal paintings and
pet portraits in oils

PLUS

Art gifts including:
prints, canvases, placemats,
coasters, cushions, tea towels,
aprons, greetings cards
and more.

Tel: 07534 424591

Email: Laura@lhm-art.com

www.laurabeadsellmoore.com

Brockford Green, Wetheringsett

Vince Plumbing and Heating

Gas Boilers and Heating, Bathrooms, Kitchens,
and Plumbing.

Justin Vince

07585081787

vinceplumbingandheating@gmail.com



Collective Worship Theme: Respect

We have had a fantastic start to this Summer term and have been up to lots of exciting things!

Children's University Passports

We are excited to see some of our children pass their graduation and have begun their exciting journey

MySmiles

We are excited to announce Early years and KS1 have achieved their accreditation. We are officially a healthy tooth school. The children love brushing their teeth at school daily and have enjoyed learning about why it is important.

Ocean day

Early years and KS1 have entered a competition to celebrate ocean life. The children had to design their own under the ocean habitats.



Forest schools

All the children have enjoyed their parents/guardians joining in forest schools. They were able to share all the exciting things they get up to.

Quad kids

The whole school enjoyed going to Thomas Mills high school to join in a range of mini sports activities including running, vortex throwing and long jump. All the children tried their best and made us proud.

Pet Photography and Digital art
Transform any photo

Watercolour, Pencil Sketch
Oil Painting
Restore damaged
photos

call John, 07961224515
jfoximaging@gmail.com



Wetheringsett Village Hall
Newly refurbished



**Bookings available
at weekends,
evenings
and holiday periods**
**Please contact Sue
Stannard
01449 767752**

Rates for hire of the Village Hall are:
£12.00 an hour
£50.00 for half a day (up to 5 hours) and
£100.00 for a full day (incl. the evening)



NEIGHBOURHOOD PLAN

Wetheringsett cum Brockford Neighbourhood Plan Update June 2023

Unfortunately the Neighbourhood Plan Examination was suspended in May due to a procedural issue. The Steering Group are working to address this.

At the same time, 3 things happened which affect what happens next with the Neighbourhood Plan.

1. Mid Suffolk District Council published Part 1 of their Local Plan for public consultation in March. All sites proposed for development in previous versions of the Local Plan have been removed until Part 2 of the Local Plan is produced. This includes a site for 10 houses east of Brockford Street. Work is due to begin on Part 2 of the Plan in 2024.
2. Outline planning permission was granted on appeal for 14 new houses east of Hockey Hill (on the former football field).
3. Planning permission was refused on appeal for 11 houses east and (north) of Hockey Hill.

This pause in the process allows the Steering Group to check how the community feels about the potential for new housing. Neighbourhood Plans **do not** have to allocate land for new housing.



MSDC's '*indicative*' housing figure for Wetheringsett between 2018 and 2037 is **10** new houses.

The current commitment (houses recently completed, under construction and with planning permission) is now **36**.

Please see over page - to place your vote ...

Do you think the Neighbourhood Plan should be allocating more land for housing (above that already permitted) ?

Yes

No

Please return this slip to the box in the Church porch, or email your views to wetheringsettcumbrockfordndp@gmail.com by the 31st July 2023.

For further information go to <http://wetheringsettcumbrockford.onesuffolk.net/neighbourhood-plan-2/>

DOGS DIE IN HOT CARS

Take the pledge to never
leave your dog unattended.



You could lose your
best mate in just
6 MINUTES

RSPCA 
New South Wales

Wetheringsett cum Brockford Parish Council

Report on Parish Council meeting held 5 June 2023

Excess Speeding – the speed of vehicles travelling through Wetherup Street and Station Road areas was raised by parishioners. Excessive speeds have been confirmed by the VAS equipment together with very excessive speeds in Brockford Street. The Parish Council will continue to monitor and spend data to Suffolk Constabulary and it is intended these areas will take part in the ANPR scheme (Automatic Number Plate Recognition) carried out by Suffolk CC Highways. The Parish Council would also support parishioners volunteering to take part in the Speed Gun scheme. This is used widely throughout the county, will register the number plate of vehicles in excess of the speed limit which is forwarded to Suffolk Constabulary for action. If any parishioners are willing to take part in the scheme please let the clerk or a parish councillor know – this scheme has proved to be effective.

Parish Council Vacancies – as mentioned in the last magazine report following the May elections there are two parish council vacancies. It is really important that the parish council is fully represented, this ensures the council can carry out its business democratically, that all areas of the village are represented and that meetings are quorate in order to go ahead.

Meetings are held on the first Monday evening of the month at 7pm at Wetheringsett Village Hall. Minutes of Parish Council meetings are available to view on the Wetheringsett website at wetheringsettcumbrockford.onesuffolk.net these will give an overview of the work of the parish council alternatively, meetings are always open to the public and anyone interested can attend a meeting to observe the council in action – you would be very welcome.

County and District Councillor – reports were received from County and District Councillor Andrew Stringer. The County Council has confirmed that £10m will be set aside to be spent over the next 20 months on the surfaces of smaller local roads where people live, in partnership with Milestone, the new highways contractor.

Cllr Stringer reported he had been elected portfolio holder for Heritage, Planning and Infrastructure at the District Council. He stated Babergh and Mid Suffolk was aiming to reduce the number of long-term empty properties and bring them back into use. There are an estimated 600 empty homes across the two districts. Houses for homes was a re-branding of the service in the hope people will engage better with the Councils to bring these homes into use. Anyone with knowledge of an empty property should let Cllr Stringer know.

Date of next meeting: Monday 3 July 2023, 7pm at Wetheringsett Village Hall.

The Anne Robson Trust Helpline

If you or someone close to you is dying, you can talk to us
'No one deserves to die alone'

The Anne Robson Trust has launched a telephone helpline to provide support to people who are struggling with the imminent death of someone they care about.

Our telephone helpline is manned by specially trained volunteers to support people across the UK.

The Anne Robson Trust Telephone Helpline 0808 801 0688

Lines are open: Monday to Friday 12-6pm

Calls are completely free from all UK landlines and mobiles

To find out more please visit our website www.annerobsontrust.org.uk

The Cedars Pool

The Cedars pool was well used over the Easter holiday, and we have managed to keep the temperature at 80F. Our registered families in the parish is up to last year's number and the regular swimmers have returned, so hopefully we are a fitter community!



tonyalston@hotmail.com for details.

Coffee Mornings

All Saints Church Wetheringsett

every Wednesday between 10:30 & 12:00

Scrumptious home-made spread, teas and coffees

Why not drop in and join our cheerful social gathering

All ages welcome and friendly dogs too

We do not charge, but donations as you see fit
are welcome

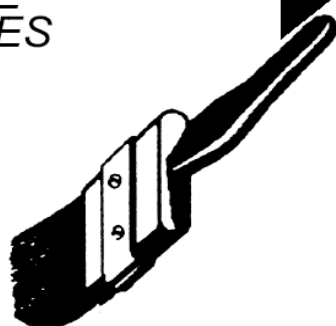
S.C. CLIFFORD **PAINTER & DECORATOR**

• INTERIOR/EXTERIOR • PRIVATE & COMMERCIAL

9 Stowmarket Road
Stonham Aspal
Stowmarket
Suffolk IP14 6AB

FREE
ESTIMATES

Tel: STOWMARKET (01449) 711369



TAYLORMADE KITCHENS **BEDROOMS ~ BATHROOMS**



Traditional to Ultramodern

Standard sizes or Bespoke
(Plywood carcass option)

Granite, Quartz, Timber,
Corian or Laminate worktops

Most makes of appliances

Built-in wardrobes

Large range of bathroom
suites and showers

Professional, Meticulous Installations or supply only

Tel: 01728 860856 Mob: 07860 602317 ~ taylormadekitchens.neil@gmail.com

Friends of Debenham Library

Suffolk
Libraries

Afternoon Teas at the Library will be on **Sunday 9 July** and **Sunday 10 September**, from 2-4pm. Come and enjoy cake, scones and hot drinks while you browse the books, read, chat or use the computers—or enjoy the garden outside, if the weather is fine. Last month the weather was *too* warm, so we sat inside and enjoyed the air conditioning instead!

Did you know....?

Authors receive royalties when their books are borrowed from libraries.

Reading Challenge: look out for the Summer Reading Challenge, starting on **15 July**. This year's theme for 4-11 year olds is *Ready, Set, Read*. Adult volunteers would be very welcome to

help with this; speak to the staff.

If you went to the Suffolk Show you may have seen **PAWS-itivity** at the Suffolk Libraries stand—45 decorated Labrador dog sculptures created to raise funds. *Leopardor* by local artist Lily Hammond will visit Debenham soon! The Friends have given £250 sponsorship.

At the People's Champion Awards in June

Howard Simpson won the Innovation award for organising the Heavy Metal Day held last July, which raised over £2,000 for library funds by collecting scrap metal. He gave credit to his wife Jane for suggesting the idea! Unfortunately our manager Maureen John did not win the Volunteer's choice award, but continues to give her excellent support to volunteers.



Lego Brickology Fun Day Workshop: Wednesday 9 August, 2-4pm. Ages 4+ (and adults!), sponsored by Denbury Homes.

The junior **Dungeons and Dragons group** will be launching soon. Speak to the staff for details.

Books, DVDs, WiFi, Computers, Printing/photocopying/scanning, CDs and audiobooks, downloadable films/music/audiobooks/ebooks, free reservations. The room is available for hire outside opening hours.

School Corner, Debenham IP14 6PL (next to the Primary School).

Opening hours:

Tuesday: 0930 am – 1300 pm Wednesday : 1500 – 1930 pm

Saturday: 0900 am – 1300 pm Sunday: 1200 – 1600 pm

Tel: 01728 861940 Email: debenham.library@suffolklibraries.co.uk

Facebook: DebenhamLibraryAndFriends

www.suffolklibraries.co.uk/visit/locations-and-times/debenham-library



Strength

Flexibility

Calmness

BOOST YOUR WELLBEING WITH YOGA

Whether you are an athlete or an absolute beginner, why not try it for yourself? Discover the **Yogaways** to increase your flexibility, build strength, improve your balance, breathe more effectively, feel calmer, and have fun. You don't need to be able to reach your toes!

Classes every Wednesday evening at Wetheringsett Village Hall
6.30pm start

If you are interested in coming along, please contact me for further details: -

Amanda Wearing. Telephone: 01449 711674;

Email: atwearing@yahoo.co.uk

Providing Personal Care in your own Home



Recruiting
NOW!
We need
exceptional
people who
love to
care

Do you need help with:

Personal Care
Dementia Care
Respite Care
Help Around the
House
Day Trips Special
Occasions

Request a
Brochure or book
an appointment
on 01449 763086
or 01284 711845



We only employ people who love to care.


Supporting Independent Living

www.mycare-at-home.co.uk

THE COMBINED CHURCHES'
CHOIR
INVITES YOU TO A
**CONCERT FOR
PEACE**



**Stowmarket Parish Church of St Peter
and St Mary**

7pm Saturday 15th July

Including the Choral Suite from Karl Jenkins'
Armed Man, Mass for Peace, and other music
and readings on the theme of peace

Free admission - Retiring collection for Stowmarket
Relief Trust and
Disasters Emergency Committee

Bishop & Miller

AUCTIONEERS VALUERS

We offer free no obligation valuations on a wide range of objects either in our Stowmarket saleroom or from the comfort of your own home.



www.bishopandmillerauctions.co.uk

19 Charles Industrial Estate, Stowmarket, IP14 5AH
01449 673088 enquiries@bm-auctions.co.uk



**Mid-Suffolk
Light Railway
Museum**
01449 766899
www.mslr.org.uk
Brockford Station,
Wetheringsett, IP14 5PW



Suffolk's award winning and only standard gauge heritage railway
The Middy Bar now open again on Friday Nights
Spring 2023 Programme

The Spring events pave the way for a full programme of open days every Sunday and Bank Holiday from 4th June to 3rd September.

At every opening there will be steam train rides in genuine Victorian 4-wheel carriages and the Museum, cafe, Restoration Shed, souvenir shop and Middy's real ale bar will all be open too.

Next event: - 2nd July
Steam Railway & Land Rover Owners Day

For the full programme and entry prices see www.mslr.org.uk

******* NEW - The Middy Market *******

Something new at The Middy—the start of a series of craft fairs / car boot sales
'The Middy Market' 10am—2pm

These will run every second Saturday morning of each month during the summer season.

Next dates: - **8th July, 12th August 9th September.**

Free pitches - to book a space go to www.mslr.org.uk/middy-market
No trains will run on these days but the Tea Room and Museum will be open

Middy Café

Open to the local community on Wednesday and Saturday mornings 9am-1pm (when railway volunteers are there)

Stenning Photographic



Portraiture, model portfolios
Commercial/Industrial Photography
email: stenningphotographic@gmail.com
www.michael-stenning.format.com



Willow Upholstery

M: 07394 544588
E: willow.upholstery@gmail.com
W: willow-upholstery.com

DIGITAL

copycentre
For All Your Copying



Digital Laser Colour Copies
Plan Prints to A0 size
Colour & B/W
Booklet - Magazine Printing
Laminating to A2 size

***We print from E-mail, CD
Memory stick, or hard copy***

**EXCELLENT RANGE OF
COLOURED PAPER AND CARD
DOCUMENT COMB BINDING**

Email: info@digitalcopycentre.co.uk
37 Stowupland Street, Stowmarket, IP14 1EG

01449 678100

Optimal Heating

Father & Son Team
with over 30 years experience

Specialist Heating Engineers
Oil, Natural Gas & LPG Servicing and Repairs



Tel: 01728 628687
Mobile: 07806 660399



South Hartismere Benefice

July Newsletter 2023

Leaving Well



Dear Friends,

This month I am writing to you all with very mixed emotions as I prepare to leave the churches and communities of South Hartismere.

I have been reflecting on an inspirational quote illustrated by Revd Lauren Moore:

'Life is a balance of holding on and letting go'

I have been here for 10 years, and I have always known that I would recognise when it was the right time for me to leave, and that time is now. As I let go of my duties and responsibilities, I will always hold on to the fond memories I have of my time here. However, I am not ready to retire, so my next post will be a good stepping-stone for me between full-time ministry and retirement.

The new post will be part-time, about 4 days a week plus Sundays, and it is a small rural benefice close to Bury St Edmunds, with 3 parishes, 4 churches, and 1 Church of England Primary school. It was a difficult decision to make at first, but I feel very affirmed that it was the right one.

It is time for someone new to lead you through the next chapter in the life of our churches, and to build on all that we have achieved together. I am so grateful for all the encouragement and support I have received, and this time with you has been one of the happiest times in my life.

My last service here will be **on 3rd September at Thorndon Church at 10.30am, followed by a picnic lunch.** My licensing service in the Rougham Benefice will be on **5th October at 7.00pm**, - details to be confirmed - and I would love it if you could join me at either or both of those services.

In the meantime, I leave you with Paul's words to the Corinthians:

Finally, brothers and sisters, farewell. Put things in order, listen to my appeal, agree with one another, live in peace; and the God of love and peace will be with you. And the grace of the Lord Jesus Christ.

And the love of God, and the fellowship of the Holy Spirit be with all of you.

With love and prayers,

Julia

From the Parishes: May 2023

In Loving Memory: Lucy Muskett, Thorndon; Jennifer Charles, Gislingham; Malcolm McCartney, Wetheringsett

Congratulations: to Jake Field and Lauren Packer on their wedding at Yaxley



South Hartismere Benefice

For services held in church and online

JULY 2023

Week 1 Sunday 2nd July <i>The 4th Sunday after Trinity</i>	Yaxley	10.30am	Benefice Holy Communion <i>followed by bring and share lunch</i>
Saturday 8th July	Mellis	10-12noon	CONNECT <i>with cake & company</i>
Week 2 Sunday 9th July <i>The 5th Sunday after Trinity</i>	Mellis Stoke Ash	10.30am 10.30am	Worship for All Holy Communion
Week 3 Sunday 16th July <i>The 6th Sunday after Trinity</i>	Thornham Parva Thorndon Gislingham	10.30am 10.30am 10.30am	Holy Communion Holy Communion Worship for All
Saturday 22nd July	Thornham Magna	6.00pm	Sung Evensong for the Feast of St Mary Magdalene, <i>followed by refreshments</i>
Week 4 Sunday 23rd July <i>The 7th Sunday after Trinity</i>	Wetheringsett Thornham Magna	10.30am 10.30am	Holy Communion Holy Communion
Week 5 Sunday 30th July <i>The 8th Sunday after Trinity</i>	Gislingham	10.30am	Benefice Holy Communion

Contact:



Reverend Canon Julia Lall - *Rector*
rev.julialall@gmail.com 01379 678064 & 07850 492212

Reverend Lauren Moore – *Curate*
rev.laurenmoore@gmail.com 07798 705876

Reverend Debbie Nicholls – *Assistant Curate*
rev.d.nicholls@gmail.com 01379 678753



<https://www.facebook.com/groups/SouthHartismereChurches/>



Mid Suffolk

My oldest child is starting school in September and with uniforms and PE kits, the costs are already mounting. We're already pretty stretched, so I'm not sure how to cover these new costs. Is there any extra help I can get?

The start of a school year can be tough for many people's budgets, so you're not alone in your worries. But there is help available.

On the National Citizens Advice website, we have lots of information on the support you might be entitled to for school-related costs. If you're claiming benefits it's worth checking if you can get extra help for things like school lunches, transport and uniforms. This information can be found at citizensadvice.org.uk/family/education/help-with-school-costs. If you are not online, Citizens Advice Mid Suffolk can advise on the telephone or in person.

Children in Reception, Year 1 and Year 2 automatically get free school meals. For older children, you can apply for free school meals if you claim certain types of benefits. The full list is available on the Citizens Advice website, and includes Universal Credit, Child Tax Credit and Income Support.

Schools can advise on finding cheap or free second hand uniforms. Often the school will have a second hand uniform shop, where the cost is much cheaper. A lot of schools accept cheaper non logo items rather than official logo school uniform, so do check with your school if this is the case.

If your child is disabled or has a health condition, you can also claim Disability Living Allowance (this isn't means-tested).

A lot of people's budgets are feeling the squeeze at the moment, but it's important to remember that help is available with starting school costs.

Citizens Advice Mid Suffolk can provide advice on this or any other issue, including debt, finances, employment, benefits and family/relationships. You can contact them on 01449 676060, visit in person at Milton House, 5 Milton Road South, Stowmarket IP14 1EZ or use the contact form at midsuffolkcab.org.uk/contact-us.

Our opening hours are Monday-Thursday 9.30am – 3.30pm and Friday 9.30am – 12.30pm. For more information go to midsuffolkcab.org.uk.



The Hair Studio at Mendlesham Ltd

BEV & KIRSTY

FORMERLEY CURL UP & DYE

WE ARE BOTH FULLY QUALIFIED WITH OVER 40

YEARS OF EXPERIENCE BETWEEN US

PROFESSIONAL ADVICE AND PERSONAL ATTENTION

IN ALL ASPECTS OF HAIRDRESSING

PERMS: COLOURS: HI-LITES:

CASUAL PUT-UPS WEDDING HAIR: RESTYLES Etc

FOR ALL THE FAMILY AT UNBEATABLE PRICES

EAR PIERCING AVAILABLE

EASY OFF ROAD PARKING

ALL DEBIT/CREDIT CARDS ACCEPTED

GIFT VOUCHERS AVAILABLE

FOR ALL ADVICE AND APPOINTMENTS

CALL US ON 01449 766977

OR VISIT US AT

Ropers Farm, Church Road, Mendlesham, IP14 5SF

www.hairstudioatmendlesham.co.uk

MPD TANKS LTD



Steel and Plastic oil tanks installed



**Registered
Technician**

Fully Insured

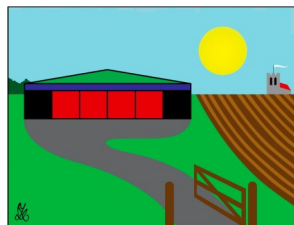
Telephone: -

Mendlesham

01449 767820

07708 395 889

Debenham Shed



Come to our craft days! Our next is **Saturday 22 July** from 9am to 12pm, using decoupage to decorate oyster shells with guidance and tuition. Book early to avoid disappointment (email chairman@debenhamshed.org.uk). Special Price: members £5, non members £8 (includes refreshments and materials). Location: 2 Fields, Low Road, Debenham, IP14 6BJ. We meet monthly through the year with different activities to join in with, so come along and have a go!!



Debenham Shed is at 2 Fields Farm, Low Road (IP14 6BJ). We are open on Monday mornings 9am-12pm, Friday afternoons 2-5pm and normally the second Saturday morning of each month.

Chairman: Dennis Morley 07976 925016. Treasurer: Tony Hutt 07906 614328. Visit our website at www.debenhamshed.org.uk (sign up to newsletters on the Contact page) Email info@debenhamshed.org.uk . Like our Facebook page at www.facebook.com/DebenhamShed.

*What is Debenham Shed? A place to make things by yourself, with guidance or with others. It could be in metal, cloth, wood or plastic. We have lots of tools and sourcing materials. You may want to repair or make new—the limit is your imagination. It is also for social connecting and friendship building, sharing skills and knowledge, and of course a lot of laughter. **Debenham shed is open to all adults.***

GREEN MAN

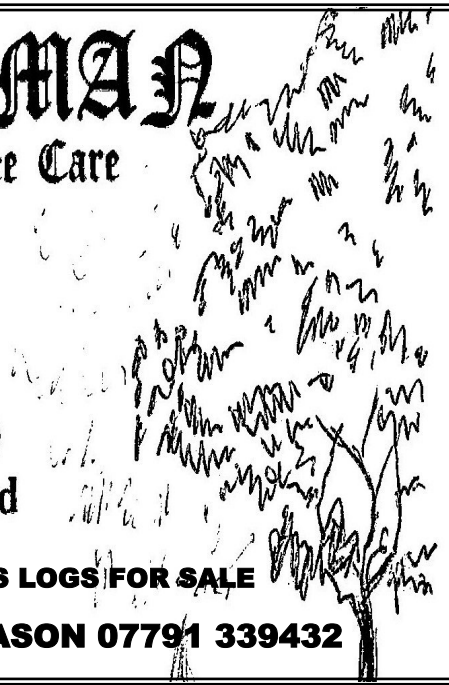
Forestry & Tree Care

Horse Logging
Tree & Hedge Maintenance
Health Report & Advice
Tree Felling (*only as last resort*)
NPTC qualified - fully insured



JASON HAS LOGS FOR SALE

Ring: JASON 07791 339432



Wetheringsett Manor

Wetheringsett Manor School News

During the half term we had some art work displayed at the Suffolk Show for the "Save our Seas Exhibition". We have lots more planned for the Summer term, which is now underway.

So far, six pupils have already completed a Duke of Edinburgh walk and camped for one night! There are more trips planned and the pupils will be going to London Dungeons and staying at Bawdsey Manor.

The exams have now been completed and we wish all pupils who completed them good luck for their results.

We have plants such as courgettes and tomatoes at the end of the driveway as we had too many for the allotment so we are selling them- we have lots to go to a good home!





Amanda
Polley

Swimming Lessons

Private one-to-one swimming lessons nr Wetheringsett

For all ages and abilities

30 min sessions

Available on weekday evenings and weekends

Experienced, STA Qualified, CRB checked and Insured

Call **07910 376 906** or

Email **theswimteacher@yahoo.com** for details

Smile awhile -

Continuing from last month ... more actual maintenance complaints submitted by Qantas' pilots and the solutions recorded by maintenance engineers.

(P=The problem logged by the pilot) (S=The solution & action taken by mechanics)

P: Evidence of leak on right main landing gear.

S: Evidence removed.

P: DME volume unbelievably loud.

S: DME volume set to more believable level.

P: Friction locks cause throttle levers to stick.

S: That's what they're for.

P: IFF inoperative.

S: IFF always inoperative in OFF mode.

P: Suspected crack in windshield.

S: Suspect you're right.

P: Number 3 engine missing.

S: Engine found on right wing after brief search.



Final few next month ...

Brockford Sidings Dog Park

A fun and secure place to exercise your dogs in the countryside!
Bring your own dogs' toys or make use of our supplied agility equipment.

Park inside the field so no need for a lead! Shelter for rain cover and a clean water tap for dog bowls and washing your dog off also available.

Bookings online only at:
www.brockforddogpark.co.uk

Location: Brockford Sidings, Brockford Green, IP14 5NN

D. I. ALSTON LTD.

THE CEDARS, CEDARS HILL, BROCKFORD. IP14 5PQ

OFFICE AND WORKSHOP LETS

SELF STORAGE CONTAINERS

(20FT, £100 PCM inc. VAT)

BROCKFORD SIDINGS HOLIDAY LETS

BROCKFORD CAMPSITE

DOG EXERCISE PARK

FOR ALL ENQUIRIES CONTACT:

TONY ALSTON

01449 766231

dialstonltd@outlook.com

CHIMNEY SWEEP



ECO SWEEP CHIMNEY SERVICES



- POWER SWEEP METHOD USED FOR A MORE THOROUGH CLEAN THAN A BRUSH
- FULLY INSURED
- INSURANCE RECOGNISED CERTIFICATES ISSUED ON EVERY SWEEP
- GOLD MASTER MEMBER OF GUILD OF MASTER CHIMNEY SWEEPS
- ALL CHIMNEYS, WOOD/MULTI FUEL BURNERS, AGA, BOILER FLUES SWEEP
- BIRD GUARDS FITTED


TEL: (01359) 232335

EMAIL: ecosweep@live.com

GEOFF NICHOLLS & CO
SPECIALISTS IN
PERIOD PROPERTY
RESTORATION

renovation work, all repairs,
alterations, conversions,
roofing, decoration etc.

Quality work guaranteed



Bacton.
(01449) 781375

Complete Building Service

Traditional Oak Carpentry

Conservation and Construction



New Homes
Extensions
Garden Frames
Structural Repairs
Historic Reports
Design Service

www.traditionaloakcarpentry.co.uk

01449 768817



ACORN

Better days, Better lives

Wetheringsett Manor School

Wetheringsett Manor

We invest time with each individual child to recognise and understand their learning needs so that we can put in place the right support package.

Trust is the core of our education provision at Wetheringsett Manor, we have a focus on building strong relationships between individual students, teachers and the wider school community.

If you require further information please call: - 01449 703935

ADVERTISING RATES

for the Wetheringsett-Cum-Brockford Newsletter

A5 Full Page	11 Issues - £ 100.00	5 Issues - £ 50.00
A5 Half Page	11 Issues - £ 50.00	5 Issues - £ 25.00
A5 Quarter Page	11 Issues - £ 40.00	5 Issues - £ 20.00
Back cover	11 Issues - £ 150.00	5 Issues - £ 75.00

RING Bernie Grindlay on 07745 503967
bernadette.grindlay@sky.com

WE WELCOME NEW ADVERTISERS

Ipswich Mobile Library Route 7

7H	<i>Brockford St</i>	<i>Old Griffin</i>	1245 – 1300
7I	<i>Wetheringsett</i>	<i>Hockey Hill</i>	1405 – 1420
7J	<i>Wetheringsett</i>	<i>Wetherup St</i>	1430 – 1445
7K	<i>Wetheringsett</i>	<i>Park Green</i>	1450 – 1505

Email: help@suffolklibraries.co.uk

Telephone: 01473 263838

Calling every 4 weeks on **Thursdays**

Next visit: Thursday 6th July

WETHERINGSETT PARISH COUNCILLORS

<u>Parish Councillors</u>			
Cllr Elizabeth Cain	CHAIR	eccain@btinternet.com	
Cllr Mrs Rachel Leech	VICE CHAIR	rachelleech67@btinternet.com	
Cllr Charles Harvey		charles@the-harveys.org	
Cllr Tony Alston		tonyalston@hotmail.com	01449 766231
Cllr Barry Lacey		sally.lacey@btconnect.com	01728 860273
Cllr Mrs Elizabeth Aldred		aldred.sons@gmail.com	01728 860482
Cllr Nigel Lingard		nigel.lingard@hotmail.co.uk	01449 766918
Cllr Lizzie Drury		equine.nutrition1972@gmail.com	07470 513211
Cllr Kaylee van Zyl		mrandmrskvanzy@gmail.com	
Parish Clerk: Mrs Lynne Cockerton		lynne.cockerton@btopenworld.com	01728 862001
County & District Councillor : Cllr Andrew Stringer		Andrew.Stringer@midsuffolk.gov.uk	01449 780339
Stowmarket Safer Neighbourhood Team		Stowmarket.snt@suffolk.pnn.police.uk	101 (non emer- gency calls only)



MOT testing in Wetheringsett at MPA

**All cars and light vans up to 3T
Testing by appointment**

Ring Michael to book your test

Tel: 01449 767070

**Classic car restoration,
service and repair.**



Email: mpaclassics@hotmail.com

Tel: 01449 767070

**Unit 2, Old Station Yard, Station Road, Wetheringsett, IP14 5QJ
Next door to Mid Suffolk Light Railway Museum**