

Wetheringsett-cum-Brockford



NEWSLETTER

APRIL 2024

USEFUL CONTACTS

Parish website; http://wetheringsettcumbrockford.onesuffolk.net/home/	
VILLAGE HALL BOOKINGS ~ Sue Stannard	01449 767752
RECTOR ~ Rev. Canon Susan Loxton revloxton@gmail.com	01379 388493
PCC SECRETARY ~ Emma Morris	01449 766117
ADMINISTRATIVE CHURCH WARDENS ~ Tim Rowe ~ Edward Gordon-Hall	07775 872742 07780 495851
WETHERINGSETT V C PRIMARY SCHOOL Executive Headteacher ~ Imogen Wallis Head of School ~ Samantha Sheeran Chair of Governors ~ Jo Pitt	01449 766215
PARISH TREE WARDEN ~ Elizabeth Aldred	01728 860482
TOWNLANDS TRUST ~ Lynne Cockerton	01728 862001
PARISH FOOTPATH WARDEN ~ Elizabeth Aldred	01728 860482
RSPCA Suffolk Central ~ Ian Hendry	01449 767747
NON-EMERGENCY POLICE ~ Reporting, Info or Enquiries	101
MENDLESHAM HEALTH CENTRE	01449 767722
NEWSLETTER ~ Editor, Cally Buch	01449 766417
~ Adverts/Invoicing, Bernie Grindlay	07745 503967
~ Distribution, Sue & Eddie Payne	07857 686067
Email ~ wetheringsettnews@gmail.com	

DISCLAIMER

All adverts are placed in good faith, and the publishers cannot undertake responsibility for work carried out.

The opinions expressed in articles are not necessarily those of the editor. We cannot be held responsible for the accuracy of material submitted for publication; however, we reserve the right to refuse inclusion; to edit or amend as we think appropriate.

The newsletter is produced in good faith but errors and omissions may occur during the process of production. Please let us know if this is the case so that any errors may be corrected in future editions.

Welcome to the April 2024 issue of your Newsletter



We start this month on the last Easter bank holiday, and the first day of British Summer Time ...it's also All Fool's Day! As Mark Twain said,

Happy
April Fool's
Day!



"The first of April is the day we remember what we are the other 364 days of the year."

April—famous for its showers that bring on May's flowers! Now it really feels as though we can glimpse the summer ahead ...the days are lighter and so feel longer, and the gardeners amongst us can really get cracking with all the work that needs to be done. Calling for willing volunteers for the annual village litter pick on Sunday 7th details on p.5 Also the Village Hall Committee are seeking a new Treasurer - details on p.7

Looking toward June and the 80th anniversary of D-Day, Tommy Downing is preparing to undertake The Overlord Challenge and would like to acknowledge anyone from the village that was involved in D-Day. If you know of anyone please contact Tommy (details on p.13)



Enjoy your April,

Cally (Editor)

Dates for the Diary

April

Monday 1st	Easter Monday (Bank Holiday)
Monday 1st	April Fools' day
Sunday 7th	Village Litter Pick
Wednesday 23rd	St Georges Day

May

Tuesday 7th	Annual Parish Meeting. All welcome to attend
Friday 17th	'Curtains Up' Murder Mystery evening (Village Hall)
Saturday 18th	'Curtains Up' Murder Mystery evening (Village Hall)

June

Thursday 6th	80th Anniversary of D-Day
--------------	---------------------------

Contributions from the village community for inclusion in the newsletter are welcomed

Deadline for copy 15th of every month

Stenning Photographic



Portraiture, model portfolios
Commercial/Industrial Photography
email: stenningphotographic@gmail.com
www.michael-stenning.format.com



Willow Upholstery

M: 07394 544588
E: willow.upholstery@gmail.com
W: willow-upholstery.com

DIGITAL

copycentre



For All Your Printing

News letters, Flyers
Booklets - Magazines
Plan Prints up to AO size
B/w, Colour & Scanning
Order of Services
Sewing Patterns
Comb binding
Laminating

Email: info@digitalcopycentre.co.uk
37 Stowupland Street, Stowmarket, IP14 1EG

01449 678100

Optimal Heating

Father & Son Team
with over 30 years experience

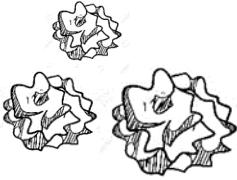
Specialist Heating Engineers
Oil, Natural Gas & LPG Servicing and Repairs



Tel: 01728 628687
Mobile: 07806 660399



SPRING VILLAGE LITTER PICK



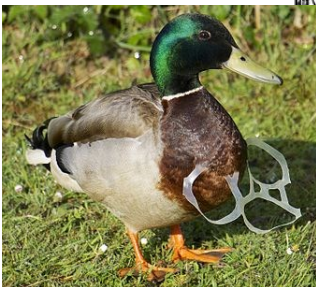
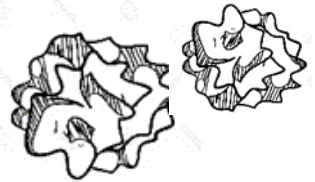
Please join us on
Sunday morning 7th April
for the village litter pick

Pickers and bags will be provided as usual

Please bring your own gloves if needed

Accompanied children and dogs very welcome

We hope to see everyone at the village
hall at 10am



Wetheringsett cum Brockford Parish Council

Report of meeting held 4 March 2024

Litter Pick – Sunday 7 April 2024 – meet 9.45am – 10am at Wetheringsett Village Hall - volunteers to help with the litter pick would be very welcome, equipment provided but please bring your own gloves.

Kill your Speed Signs – thanks were recorded to County Cllr Andrew Stringer for providing a grant of some £500 from his locality highway budget for the purchase of ten Kill Your Speed signs. These will be located around the village to remind motorists of speed restrictions.

Parish Emergency Plan – Cllr Mrs Kaylee van Zyl reported on progress with the revised village emergency plan. Contact had been made with parishioners with regard to equipment that could be provided in an emergency, ie use of a Land Rover and two-way radio. Further progress will be reported at the next parish council meeting.

Flooding – the long-standing blocked drain in Church Street is currently being investigated by Suffolk CC Highways.

Village Hall Solar Panels – Cllr Nigel Lingard confirmed grant funding of £13,500 for the proposed solar panels had been secured, £8,500 from a MSDC capital grant and s.106 funding and £5000 from the Lottery Community Fund. Installation due to commence during April.

Thanks were recorded to Cllr Lingard for his work on the project.

Council Tax – Cllr Stringer reported the MSDC 2024-25 budget had been agreed. There will be a 2% increase in Council Tax for the MSDC portion and he stated at £3.50 per year this was the lowest tax rise of any Suffolk authority.

The County Council portion of council tax was due to rise by £74 annually for a Band D property from April. Cllr Stringer added the County Council was borrowing from its reserves to meet the growing demand for social care for adults and children.

Potholes, Highway Maintenance, Flooding, Public Rights of Way – parishioners are reminded of the very useful Suffolk CC ‘Report a Repair or Problem’ facility available on the Suffolk CC website, go to Suffolk CC Report a Highway Issue go to the Green Box ‘Report an Issue’ which will direct the user to a map where they can pinpoint the problem and request a repair – a very useful facility.

Wetheringsett Annual Parish Meeting – this will be held on Tuesday 7 May 2024, 7pm at the Village Hall. This is a meeting for parishioners –

All Welcome to attend.

Date of next meeting – Monday 8 April 2024, 7pm at Wetheringsett Village Hall.



Urgently Required - we are looking for someone who likes money!

The Village Hall Committee urgently needs a new Treasurer, (a voluntary post), as the current postholder, who has done a magnificent job for the last 4 years, is resigning from the end of April.

The duties are not very onerous with monthly meetings held in the village hall and the usual things associated with looking after a bank account and paying bills etc

If you think you might be interested in becoming involved with an enthusiastic group of people and supporting your village, then please get in touch with Charles Harvey, the Chairman, at charles@the-harveys.org

Vince Plumbing and Heating

Gas Boilers and Heating, Bathrooms, Kitchens,
and Plumbing.

Justin Vince

07585081787

vinceplumbingandheating@gmail.com



CHIMNEY SWEEP



ECO SWEEP

CHIMNEY SERVICES



- POWER SWEEP METHOD USED FOR A MORE THOROUGH CLEAN THAN A BRUSH
- FULLY INSURED
- INSURANCE RECOGNISED CERTIFICATES ISSUED ON EVERY SWEEP
- GOLD MASTER MEMBER OF GUILD OF MASTER CHIMNEY SWEEPS
- ALL CHIMNEYS, WOOD/MULTI FUEL BURNERS, AGA, BOILER FLUES SWEPT
- BIRD GUARDS FITTED

TEL: (01359) 232335

EMAIL: ecosweep@live.com

GEOFF NICHOLLS & CO
SPECIALISTS IN
PERIOD PROPERTY
RESTORATION

renovation work, all repairs,
alterations, conversions,
roofing, decoration etc.

Quality work guaranteed

Bacton.
(01449) 781375

Complete Building Service

Traditional Oak Carpentry

Conservation and Construction



New Homes
Extensions
Garden Frames
Structural Repairs
Historic Reports
Design Service

www.traditionaloakcarpentry.co.uk

01449 768817

Curtains Up

PRESENTS

A MURDER MYSTERY EVENING

CURIOSITY KILLED THE CARETAKER

FRIDAY 17TH MAY & SATURDAY 18TH MAY

At Wetheringsett Village Hall

DOORS OPEN 6.45PM FOR 7.15PM PROMPT START

TICKETS, on sale now, are £12.50 EACH

TO INC A LIGHT SUPPER & DESSERT

(Please inform of any allergies when booking)

B.Y.O DRINKS

RAFFLE ON THE EVENING

BOX OFFICE 01449 767752

WE HOPE YOU CAN JOIN US

COME AND TRY OUT YOUR DETECTIVE SKILLS

TO SEE IF YOU CAN

"GUESS WHO DUNNIT"



April Jokes

What goes up when April showers come down? An umbrella.

How can you tell when April is happy? It has a little spring in its step

**What do you call a sunny day that follows two rainy April days?
Monday.**





Often charities, a bit like businesses, are judged by the largest number of customers for the smallest costs. However, successful community-based projects like The Debenham Project almost always follow an alternative principle – provide the care and support now, and worry about the cost later. We have always applied this approach by “getting on and doing something” – something that might help a family carer, or the loved one they care for, even if only just a little. We hope that The Debenham Project will always be somewhere to find help. The numbers that come to the Carers Club, Fit Club, Lunch Clubs, Songs for Sharing, etc. are great, but the real benefits of the Project lie in the difference that it can make, personally and individually, from having someone to talk to, assistance with forms, information, advice, guidance, friendship, etc. All acts of kindness not readily to be measured by statistics. I am convinced that it is these, and the personal relationships involved, that help and strengthen the well-being of those families amongst us who are having to live with dementia.

With all my best wishes, Lynden Jackson

www.the-debenham-project.org.uk ; 01728 862003

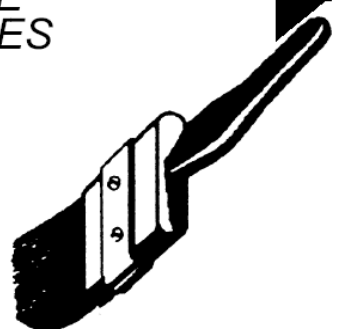
S. C. CLIFFORD PAINTER & DECORATOR

• INTERIOR/EXTERIOR • PRIVATE & COMMERCIAL

9 Stowmarket Road
Stonham Aspal
Stowmarket
Suffolk IP14 6AB

FREE
ESTIMATES

Tel: STOWMARKET (01449) 711369





It's a Dog's Life

Hello everyone!
I've been looking forward to some warm weather for a bit of sunbathing in the garden but it doesn't seem to be happening yet.....

Also, mum's got a bad back so I've been helping by offering my services as a heat pad on the sofa and watching TV. The other day we saw something called Crufts... I was amazed! Not a scruffy dog in sight! Now I know I'm a total fuss pot but I'm not sure I could do with all that grooming and faffing. Mum suggested that the agility classes might be something I should take up, running up & down ladders, over gates, through tunnels....I needed a nap just watching it.

So I wondered what classes I could be entered for?

The suggestions were:

- Best scrounger
- Best at sleeping in odd positions
- Best stealer of socks

As far as I'm concerned, it should be best in show!

Woofles of Wetheringsett

***Accommodation required for one week
from Saturday 20 July – Saturday 27 July for a couple with
young baby helping on Wetheringsett Summer Camp
at the manor.***

Happy to pay normal rates.

If you can help, please call Oli Watson on 07964 088310

Are you looking for something fun to do with your dog? Come and try

Hoopers

An exciting new canine sport suitable for every shape & size of dogs from 6mths old

Nervous or Reactive dogs welcome too

Beginners classes and 1-2-1 lessons now available at

Brockford Sidings Dog Park

Fully Insured and Accredited Canine Hoopers UK (CHUK) Instructor.

For details and to book please call or WhatsApp Sue on - 07748 587 131 or email— fullsteamdogs@gmail.com



KELLYS CRAFTY CORNER
HABERDASHERY
2 Chancery Lane, Debenham, IP14 6RN



AS FROM APRIL THE SHOP WILL BE
Open

Wednesday	9 to 4
Thursday	9 to 4
Friday	9 to 4
Saturday	9 to 4

Keep a look out for new evening and daytime workshops... More Info to follow soon...

01728 598 550 / 07835 450 282

 Kelly's Crafty Corner  @kellys_craftycorner



Providing Personal Care in your own Home



Recruiting NOW!
We need exceptional people who love to care

Do you need help with:

Personal Care
Dementia Care
Respite Care
Help Around the House
Day Trips Special Occasions


Request a Brochure or book an appointment
on 01449 763086
or 01284 711845

We only employ people who love to care.

 **MyCare**
at Home
Supporting Independent Living

www.mycare-at-home.co.uk



This year is the

80th anniversary of the D-Day landings.

Tommy Downing from Brockford is taking part in the Overlord Challenge 2024 in June for the 80th anniversary of D-Day, to raise money for The Royal British Legion and the Veterans Hub.

Currently in training, making several-mile walks with a 50lb load, Tommy will be crossing over to France in June to participate in the 60 mile challenge! More information to follow in next month's newsletter.

To find out more and to make a donation, please go to -

<https://www.justgiving.com/team/overlord>

<https://www.facebook.com/groups/745221537560144>

Do you know of anyone from the village who was involved in the D-Day landings?

If so, please let Tommy know on 07809 499 361, or by email tommydowning@hotmail.com



Michael Brame

60 Pretyman Avenue, Bacton, IP 14 4NY

**“A” rated UPVC windows, doors and conservatories
with ‘A’ rated installation ‘C’ rated prices**

**Complete replacement of fascias, soffits,
guttering and downpipes**

Needing quotes for any of the above?

Contact Michael on

01449 781533 mob. 07931 784470

GREEN MAN

Forestry & Tree Care

Horse Logging

Tree & Hedge Maintenance

Health Report & Advice

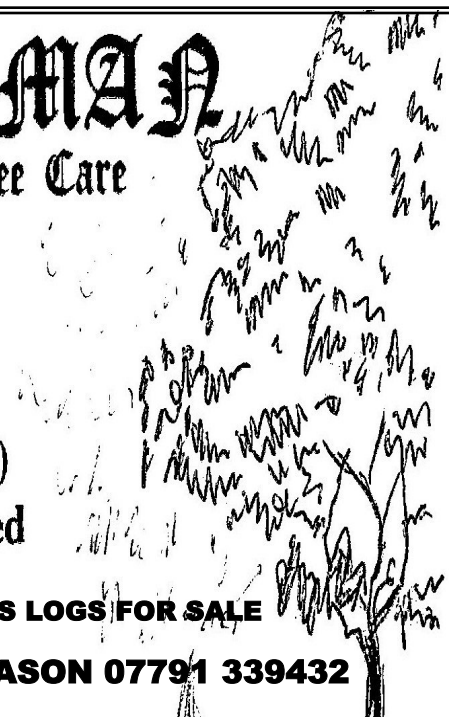
Tree Felling (*only as last resort*)

NPTC qualified - fully insured



JASON HAS LOGS FOR SALE

Ring: JASON 07791 339432



Wetheringsett Manor

Wetheringsett Manor School News

We have had lots going on at Wetheringsett Manor this term. The pupils have been fundraising and raised £300 for MND Association, which we presented to them!

Money was also raised for Comic relief on the

15th March 2024, as we wore red and bought Red Noses. There have been trips out to lots of different places such as Banham Zoo and the University of Cambridge. We have held lots of different events too such as Mexican Day, with hit the piñata, face painting and even a bucking bronco!



Mexican tiles

Friends of Debenham Library

Introducing Reading Quest,
our new summer reading programme
for children

**Suffolk
Libraries**

Children will receive a map of Suffolk, beautifully illustrated by Anna Lindsay, a local artist, and featuring alliterative myths and legends from across Suffolk. On the back will be a number of special activities, ideas and experiences to take part in over the summer. Children will be encouraged to read as many books as they like around any genre or subject. There will also be prizes and rewards for each week!

Did you know....?

Warm spaces – Anyone is welcome to visit the library just to keep warm and find someone to talk to. You don't have to take part in an activity or be borrowing something, it's ok just to come in to get out of the cold and be around people.

Heavy Metal Day Saturday 25th May

Don't forget to save up your scrap metal for our Heavy Metal Day! Help will be available on request to collect large items within Debenham or nearby, if you cannot deliver them on the day.

Last time we raised over £2,000, as well as diverting a lot of items from waste collection

Books, DVDs, WiFi, Computers, Printing/photocopying/scanning, CDs and audiobooks, downloadable films/music/audiobooks/ebooks, free reservations. The room is available for hire outside opening hours.

Opening hours:

Tuesday: 0930 am –1300 pm Wednesday: 1500 –1930 pm
Saturday: 0900 am –1300 pm Sunday: 1200 –1600 pm

www.suffolklibraries.co.uk/visit/locations-and-times/debenham-library

Email: debenham.library@suffolklibraries.co.uk

Facebook: DebenhamLibraryAndFriends

Tel: 01728 861940





Strength

Flexibility

Calmness

BOOST YOUR WELLBEING WITH YOGA

Whether you are an athlete or an absolute beginner, why not try it for yourself? Discover the **Yogaways** to increase your flexibility, build strength, improve your balance, breathe more effectively, feel calmer, and have fun. You don't need to be able to reach your toes!

Classes every Wednesday evening at Wetheringsett Village Hall
6.30pm start

If you are interested in coming along, please contact me for further details: -

Amanda Wearing. Telephone: 01449 711674;

Email: atwearing@yahoo.co.uk

Pension Credit

One benefit that a lot of people don't claim is pension credit.

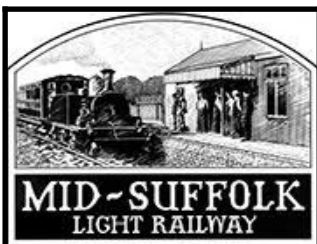
This gives people extra money to help with living costs if they are over state pension age and on a low income. It can also help with some housing costs.

It tops up your weekly income to £201.05 if you are single, or your joint weekly income to £306.85 if you have a partner, and you may be able to get extra sums on top if you have other responsibilities or costs.

The government's figures show that in the 2019-20 financial year up to £1.7 billion of available pension credit went unclaimed. On average, that added up to about £1,900 a year for each of the up to 850,000 families entitled to receive it who - for whatever reason - didn't claim.

To find out if you are eligible and how much you could get, use the government's pension credit calculator.

You can apply online, by phone (0800 99 1234) or by post.



Mid-Suffolk Light Railway Museum

01449 766899

www.mslr.org.uk

Brockford Station,
Wetheringsett, IP14 5PW



Easter Steam Up

Sunday 31st March and Monday 1st April

Opening Times: 10.30 - 16.30 each day

Steam into Spring at The Mid-Suffolk Light Railway with new USAAF 34th Bomb Group display

The first big weekend of the 2024 season at The Middy, Suffolk's only standard gauge preserved railway now has an extra reason for a visit as the museum will be hosting the 34th Bomb Group's display during 2024 and 31st March will be the opening day.

During Easter Weekend all the Middy facilities will all be open, including steam train rides in genuine Victorian 4-wheel coaches, MSLR museum, visits to the Restoration Shed, souvenir shop, café and the Middy real ale bar.

Plus Easter Bunny hunts for younger visitors.

Duty engines will be guest locomotive Andrew Barclay 1910 built 0-4-0ST no.1219 'Caledonia Works', plus the 1906 Cockerill Steam Tram and the Heritage Railway Association's Restoration Award winning Fowler diesel mechanical 'Shreddie', the Shredded Wheat Factory shunter.

Visitors will also be able to see progress on the restoration of the railway's own locomotive, Hudswell Clarke 0-6-0ST 1604 and LNER Y7 no. 985 resident with us in the Lottery Funded Restoration Shed. Work is also continuing to progress on the extension of the line to just over twice its current length to a new build destination station, to be called Aspall Halt.

The Mid-Suffolk Light Railway, the 2015 Suffolk Museum of the Year, offers a fascinating picture of what life was like on and around a rural railway during the early part of the last century and its contribution to the both 20th century world wars. It will be a great day out for families and railfans alike.

Standard entry prices apply: adults £12.00, children under 16 £6.00, families (2+20 £30.00, concessions over 65 £10.00. For more programme information visit www.mslr.org.uk



The Speed of Air Travel

Over time, I have flown on a number of occasions, mostly at non peak times, so have not suffered huge queues, and the systems have got better. However, the airlines usually request one gets there in good time, like 2 hours ahead of flight time, or longer and because traffic might be bad, one adds a safety time. Sometimes I think this is planned so that one has to walk, after security checks, through half a mile of shops, to the cafes etc, for consumption during the long period before the flight is called.

My question: have you ever spent longer in flight than in the airport?!! (Like Tom Hanks in that excellent film!)

It is nice to get away from the incessant rain, and counting the road potholes to get to sleep!

AJA 18.3.2024

The Cedars Pool—No water in the pool!



We are having maintenance done on the pool this month, and hope to be back in action before Easter, even if not heated to 80°F !



Doggy Park

The dog park is being used increasingly; in spite of the wet conditions, it is a bit swampy, but training still goes ahead.

Our Units are getting fully occupied: the taxi man should be an asset to the community - I can't advertise but he will get you there swiftly.

tonyalston@hotmail.com for details.

Do you have anything 'to say'? Any thoughts you would like to share with the rest of us— or just something you would like to 'get off your chest'

Please send your thoughts about any of the articles in the newsletter - or any other matter, to wetheringsetnews@gmail.com

(Please refer to Disclaimer on page 2)



MB Refurbishments

07964402137

mbrefurbishments@gmail.com

General Builder

***Kitchens *Bathrooms**

***Utility rooms**

***Bespoke Shelving & Cabinets**

Free Quotations

“Rosedale really do make an emotional time more bearable and your care and concern shines through all you do.”

– from a family we have cared for at Rosedale



We are a family business and promise to provide exceptional care and a truly personal 24hr service, when you need it most.



Rosedale
FUNERAL HOME

Victoria Road, Diss

01379 640810

Exchange Street, Harleston

01379 853999

[**www.rosedalefuneralhome.co.uk**](http://www.rosedalefuneralhome.co.uk)

Laura Beardsell-Moore
Fine Art

Animal paintings and
pet portraits in oils

PLUS

Art gifts including:
prints, canvases, placemats,
coasters, cushions, tea towels,
aprons, greetings cards
and more.

Tel: 07534 424591

Email: Laura@lhm-art.com

[**www.laurabeadsellmoore.com**](http://www.laurabeadsellmoore.com)

Brockford Green, Wetheringsett

Debenham & District

**Need help with
your PC?**

Friendly advice & training

Repairs & upgrades

No fix, no fee

Windows – Web – Email

Microsoft Word & Excel expert

Home network – WiFi – TV links

At your Home or Business

Phone Chris on

0757 069 5279

email: [**info@ubestree.co.uk**](mailto:info@ubestree.co.uk)

[**www.ubestree.co.uk**](http://www.ubestree.co.uk)



South Hartismere Benefice

APRIL 2024

Sunday 7th April
The 2nd Sunday of Easter

Gislingham
Thorndon

10.30am
10.30am

Holy Communion
Worship for All

Sunday 14th April
The 3rd Sunday of Easter

Mellis
Stoke Ash
Thorndon

10.30am
10.30am
4.00pm

Holy Communion
Worship for All
CONNECT

Sunday 21st April
The 4th Sunday of Easter

Thornham Parva
Thorndon

10.30am
10.30am

Holy Communion
Holy Communion

Sunday 28th April
The 5th Sunday of Easter

Thornham Magna
Wetheringsett
Yaxley

10.30am
10.30am
10.30am

Worship for All
Holy Communion
Holy Communion

Telephone Church BCP Holy Communion is on Thursdays at 11.00am



Reverend Canon Susan Loxton
Rural Dean of the Hartismere & Hoxne Deanery
revloxtongmail.com 01379 388493

Reverend Debbie Nicholls – Curate
rev.d.nichollsgmail.com 01379 678753

facebook

<https://www.facebook.com/groups/SouthHartismereChurches/>

The Anne Robson Trust Helpline

If you or someone close to you is dying, you can talk to us
'No one deserves to die alone'

The Anne Robson Trust has launched a telephone helpline to provide support to people who are struggling with the imminent death of someone they care about.
Our telephone helpline is manned by specially trained volunteers to support people across the UK.

The Anne Robson Trust Telephone Helpline 0808 801 0688
Lines are open: Monday to Friday 12-6pm

Calls are completely free from all UK landlines and mobiles

To find out more please visit our website www.annerobsontrust.org.uk

South Hartismere Benefice

April 2024 Newsletter



When I filled up with petrol recently I purchased a new UK road atlas – after all why would I turn down the chance to buy something that “no serious driver can do without”? Pleased with my new purchase I showed Mrs Rowe who asked whether I was planning a road trip that I hadn't told her about. I wasn't. She asked why I therefore needed a new road atlas as we knew all the main motor way routes to all our favourite places, towns and cities. Where we do not know the way, we put blind faith in one of the many map navigation systems, almost as if we are on auto-pilot.

Whilst it was a comfort to know that I had the most up to date road atlas, I suspect Mrs Rowe was right – maybe we will never need use of it.

I admit to having a character trait where I need to be in control and it should therefore come as no surprise that I have always had a life plan, a road map for my life to control what I can, and accept the things that I can't. Perhaps it is only when we look back on our lives that we can see the paths that we have taken. We of course have to decide for ourselves whether we took those paths out of choice; whether our lives are on autopilot; whether things, especially life changing events, happened over which we had no control or whether there were times when our destiny was perhaps decided for us. In Psalm 139 it says *“My frame was not hidden from you, when I was being made in secret, intricately woven in the depths of the earth. Your eyes beheld my unformed substance. In your book were written all the days that were formed for me, when none of them as yet existed.”* I often think on this when I consider the 2 road traffic accidents I have endured, the first when I was 10 (As you may have read before) and the 2nd in 2002 when I was hit head-on by an overtaking car whilst riding my bicycle. Those on the scene, and who picked me off the road for the 2nd time in my life, said it was only my cycle helmet that saved me.

In the Easter story we hear that as Jesus entered Jerusalem, he knew the path that he was to follow (and which would eventually lead him to the cross), but he was led into the city to be greeted as a King with cheering and celebration and with palm branches laid before him – but he wore no crown. He had previously spoken with his disciples when he said “And you know the way to the place where I am going.” Thomas said to him, “Lord, we do not know where you are going. How can we know the way?” Jesus said to him, “I am the way, and the truth, and the life. No one comes to the Father except through me.” Jesus knew, and no matter how painful he knew it was to be, that this was to be his destiny through his crucifixion and resurrection on the 3rd day.

Coming back to my own life and the future, of course I can stick to my life plan, I can blindly follow a sat nav and know that I have my new road atlas as back up and, of course, I can always put trust in my cycle helmet, but where then do I put my real faith? - in the man that wore the crown of thorns.

Tim Rowe, Church Warden

All Saint's Church, Thorndon and All Saint's Church, Wetheringsett

From the Parishes:

In Loving Memory: Rex Stubbington (Yaxley); Paul Oldfield (Mellis); Alan Miller (Gislingham)



Wetheringsett C of E Primary School

Tractors in Schools

In Geography we have been learning about the journey of food. In February we had a visit from a farmer with his tractor. Lime Class were able to ask him lots of questions. He said 'It's always a great pleasure to be able to bring a



tractor into school and talk about farming, especially with classes of children as well behaved and engaging as yours.'



A year 6 pupil was inspired to produce his own tractor artwork, which the farmer has told us is up on his office wall.

Lime class enjoyed having Rev Chrissy in to talk to them about what it is like to be a Christian. They were linking their ideas to their RE.



This term Lime and Sycamore have enjoyed sharing their learning with their parents and guardians. They spoke about what they have achieved this term and learnt about in a range of their favourite subjects.



DT day

This term the children learnt a range of different skills during DT. Lime class made moving minibeasts using pivot and sliding mechanisms, Sycamore made stable structures and Chestnut made bird houses.





The children thoroughly enjoyed watching the Hare and the Tortoise performance.



Bollywood dancing

We had lots of fun learning traditional Indian dancing alongside modern Bollywood dancing. All the children persevered and showed great determination when learning new moves.



TAYLORMADE KITCHENS BEDROOMS ~ BATHROOMS



- Traditional to Ultramodern
- Standard sizes or Bespoke (Plywood carcass option)
- Granite, Quartz, Timber, Corian or Laminate worktops
- Most makes of appliances
- Built-in wardrobes
- Large range of bathroom suites and showers

Professional, Meticulous Installations or supply only

Tel: 01728 860856 Mob: 07860 602317 ~ taylormadekitchens.neil@gmail.com



Dawmisk

HAIR AND AESTHETICS



Located on Cedars Hill, Wetheringsett.
Hairdresser, beautician, barber and aesthetician.
Highly experienced in all women's haircutting,
colouring, perming, styling and extensions,
children's hair and barbering. Offering a vast array
of other treatments including dermal fillers, anti
wrinkle injections .

TEL:

01449 768809/ 07837608444



Amanda
Polley

Swimming Lessons

Private one-to-one swimming lessons nr Wetheringsett

For all ages and abilities

30 min sessions

Available on weekday evenings and weekends

Experienced, STA Qualified, CRB checked and Insured

Call **07910 376 906** or

Email **theswimteacher@yahoo.com** for details



Coffee Mornings *All Saints Church Wetheringsett*

every Wednesday between 10:30 & 12:00

Scrumptious home-made spread, teas and coffees

Why not drop in and join our cheerful social gathering

All ages welcome and friendly dogs too

We do not charge, but donations as you see fit
are welcome

Great Insults

"I feel so miserable without you;
it's almost like having you here" - Stephen Bishop

"He has all the virtues I dislike and none of the vices I
admire." - Winston Churchill

"He had delusions of adequacy" - Walter Kerr



Mid Suffolk

My council tax bill is coming out in March, and I am dreading opening it as it always goes up. My income has stayed the same but everything else seems more expensive and I have hardly anything left over - how will I cope if my payments for this year go up?

Many of us are feeling overwhelmed as we see our basic bills and essential costs go up. You're not alone in finding things difficult and, crucially, there's support available.

First off, there are discounts available to some people depending on their circumstances. You can check your bill or contact your council to find out if you might be eligible for an automatic reduction to your council tax.

If you're not getting a discount, you might still be entitled to one. It depends on who lives in the property. So, if you're the only adult in your home, you'll get a 25% discount on your council tax bill.

When working out how many people live in a property, some people aren't counted - they're called 'disregarded people' and include under 18s, a student nurse or someone on an apprenticeship scheme and many more. Checking the government website (<https://www.gov.uk/council-tax/who-has-to-pay>) for more details. If everyone who lives in the property is disregarded, you will still receive a council tax bill, but it will have a 50% discount. However, if everyone in your home is a student or severely mentally impaired, you won't pay any council tax. Additionally, if someone has moved out, tell the council as this might change your eligibility. If you are entitled to a discount as a result, it will be valid from the date when the person moved out, even if you told the council after the event, and the reduction may be backdated.

If you think you might be eligible you should apply to your local council for a discount as soon as possible. You can find your council's contact details via <https://www.gov.uk/apply-for-council-tax-discount>

You mention that your income hasn't increased. If you are on a low income, you might be able to get your council tax reduced. If you get benefits or have other people living with you, this might affect how much your council tax is reduced by. Your local council will ask you details about your income and your circumstances, so they can work out if you're entitled to a council tax reduction. They will then calculate your new bill and tell you how much council tax you need to pay.

If you have other people living with you who are aged 18 or over, you might all be responsible for paying council tax. Only one of you needs to apply for a council tax reduction.



Mid Suffolk

The council will make a decision and reduce the amount of council tax you have to pay accordingly. You may also be eligible for additional support if you've reached State Pension age which you can check on the government website via <https://www.gov.uk/state-pension-age>. If you're under State Pension age, the 'working age rules' apply

and if you've reached State Pension age, it depends if you or your partner get certain benefits.

The working age rules still apply if you've reached State Pension age and you or your partner get:

- Universal Credit

- Income-based Jobseeker's Allowance (JSA)

- Income-related Employment and Support Allowance (ESA)

- Income Support

If you've reached State Pension age and don't get any of these benefits, the 'pension age rules' apply.

Even if none of the reduction criteria applies to you, your local council can still reduce your council tax bill or cancel it altogether, this is called 'discretionary reduction'. They'll normally only do this if you can show that you're suffering severe hardship and can't afford to pay council tax.

If you're in this situation you should ask your local council for help. You'll need to show them evidence of your circumstances. If your immigration status doesn't let you claim public funds, you can still apply for a discretionary reduction. A discretionary reduction doesn't count as public funds.

We know that times are incredibly tough and council tax is a priority bill so it's important to keep in contact with your council if you can't keep up payments.

Citizens Advice is here to help you find a way forward, without judgement, working with you side by side.

Citizens Advice Mid Suffolk can provide in depth advice on this issue and much more, including debt, finances, employment, benefits and family/relationships. You can contact them by phone on 01449 676060, visit in person at Milton House, 5 Milton Road South, Stowmarket IP14 1EZ or use the contact form at midsuffolkcab.org.uk/contact-us. Opening hours are Monday-Thursday 9.30am – 3.30pm and Friday 9.30am – 12.30pm. Citizens Advice Mid Suffolk can provide in depth advice on this issue and much more, including debt, finances, employment, benefits and family/relationships. You can contact them by phone on 01449 676060, visit in person at Milton House, 5 Milton Road South, Stowmarket IP14 1EZ or use the contact form at midsuffolkcab.org.uk/contact-us. Opening hours are Monday-Thursday 9.30am – 3.30pm and Friday 9.30am – 12.30pm.



In memory of
Beatrice (Beat) Farrow

Beat was born in April 1925 at Lacey's Corner, Wetherup Street in the cottage which is now known as Middle End Cottage. She lived in Wetheringsett for 70 years, where she enjoyed many happy times. Her final years were spent at The Limes Retirement Home in Mellis where she died in August 2023 at the age of 98. Beat is now buried in the village cemetery with her husband Don.

The donations of £400 from her funeral were gifted to Wetheringsett Village Hall and the Committee have spent the money on providing new cutlery, crockery etc for 80 place settings in order for them to be used for future events and gatherings in the Hall.

*Remembered with love by all her
family*

*Wetheringsett Village Hall Committee are very
grateful for this generous donation which will
enhance the Hall for future generations.*

Pet Photography and Digital art
Transform any photo

Watercolour, Pencil Sketch
Oil Painting
Restore damaged
photos

call John, 07961224515
jfoximaging@gmail.com



Wetheringsett Village Hall
Newly refurbished



Bookings available
at weekends,
evenings
and holiday periods
Please contact Sue
Stannard
01449 767752

Rates for hire of the Village Hall are:
£12.00 an hour
£50.00 for half a day (up to 5 hours) and
£100.00 for a full day (incl. the evening)

MPD TANKS LTD



Steel and Plastic oil tanks installed



**Registered
Technician**

Fully Insured

Telephone: -

Mendlesham

01449 767820

07708 395 889

Brockford Sidings Dog Park

A fun and secure place to exercise your dogs in the countryside!
Bring your own dogs' toys or make use of our supplied agility equipment.

Park inside the field so no need for a lead! Shelter for rain cover and a clean water tap for dog bowls and washing your dog off also available.

Bookings online only at:
www.brockforddogpark.co.uk

Location: Brockford Sidings, Brockford Green, IP14 5NN

D. I. ALSTON LTD.

THE CEDARS, CEDARS HILL, BROCKFORD. IP14 5PQ

**OFFICE AND WORKSHOP LETS
SELF STORAGE CONTAINERS
(20FT, £100 PCM inc. VAT)**

**BROCKFORD SIDINGS HOLIDAY LETS
BROCKFORD CAMPSITE
DOG EXERCISE PARK**

FOR ALL ENQUIRIES CONTACT:

**TONY ALSTON
01449 766231
dialstonltd@outlook.com**



The Hair Studio at Mendlesham Ltd

BEV & KIRSTY

FORMERLEY CURL UP & DYE

WE ARE BOTH FULLY QUALIFIED WITH OVER 40

YEARS OF EXPERIENCE BETWEEN US

**PROFESSIONAL ADVICE AND PERSONAL ATTENTION
IN ALL ASPECTS OF HAIRDRESSING**

**PERMS: COLOURS: HI-LITES:
CASUAL PUT-UPS WEDDING HAIR: RESTYLES Etc**

FOR ALL THE FAMILY AT UNBEATABLE PRICES

EAR PIERCING AVAILABLE

EASY OFF ROAD PARKING

**ALL DEBIT/CREDIT CARDS ACCEPTED
GIFT VOUCHERS AVAILABLE**

FOR ALL ADVICE AND APPOINTMENTS

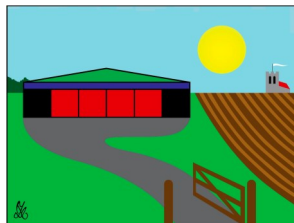
CALL US ON 01449 766977

OR VISIT US AT

Ropers Farm, Church Road, Mendlesham, IP14 5SF

www.hairstudioatmendlesham.co.uk

Debenham Shed



Two community projects have recently been completed. A bench seat was renovated by two Debenham High School students at the Shed and is now installed near the footpath from Kenton Road to Crow's Hall in memory of their uncle. A ramp was made for St Mary Magdalene church to ease access from the nave to the chancel. Meanwhile members are working on a wide variety of projects, ranging from getting Percy the Parrot working once more (complete with voicebox, flapping wings and other moving parts) to restoring flood-damaged furniture. We have also bought a nice wood lathe which we can use for wood turning projects in future.



Debenham Shed is at 2 Fields Farm, Low Road (IP14 6BJ). We are open on Monday mornings 9am-12pm, Fridays 10am-5pm and normally the second Saturday morning of each month. Membership by the year, half-year or PAYG.

Chairman: Rob Davies 07952 556152
Treasurer: Tony Hutt 07906 614328.
Visit our website at

www.debenhamshed.org.uk (sign up

to newsletters on the Contact page) Email info@debenhamshed.org.uk . Like our Facebook page at www.facebook.com/DebenhamShed.

*What is Debenham Shed? A place to make things by yourself, with guidance or with others. It could be in metal, cloth, wood or plastic. We have lots of tools and sourcing materials. You may want to repair or make new—the limit is your imagination. It is also for social connecting and friendship building, sharing skills and knowledge, and of course a lot of laughter. **Debenham shed is open to all adults.***

Quote of the month

Heaven goes by favour. If it went by merit, you would stay out and your dog would go in.

Mark Twain



ACORN

Better days, Better lives

Wetheringsett Manor School

Wetheringsett Manor

We invest time with each individual child to recognise and understand their learning needs so that we can put in place the right support package.

Trust is the core of our education provision at Wetheringsett Manor, we have a focus on building strong relationships between individual students, teachers and the wider school community.

If you require further information please call: - 01449 703935

ADVERTISING RATES

for the Wetheringsett-Cum-Brockford Newsletter

A5 Full Page	11 Issues - £ 100.00	5 Issues - £ 50.00
A5 Half Page	11 Issues - £ 50.00	5 Issues - £ 25.00
A5 Quarter Page	11 Issues - £ 40.00	5 Issues - £ 20.00
Back cover	11 Issues - £ 150.00	5 Issues - £ 75.00

RING Bernie Grindlay on 07745 503967
bernadette.grindlay@sky.com

WE WELCOME NEW ADVERTISERS

Ipswich Mobile Library Route 7

7H	<i>Brockford St</i>	<i>Old Griffin</i>	1245 – 1300
7I	<i>Wetheringsett</i>	<i>Hockey Hill</i>	1405 – 1420
7J	<i>Wetheringsett</i>	<i>Wetherup St</i>	1430 – 1445
7K	<i>Wetheringsett</i>	<i>Park Green</i>	1450 – 1505

Email: help@suffolklibraries.co.uk

Telephone: 01473 263838

Calling every 4 weeks on **Thursdays**

Next visit: Thursday 11th April

WETHERINGSETT PARISH COUNCILLORS

<u>Parish Councillors</u>		
Cllr Elizabeth Cain	CHAIR	eccain@btinternet.com
Cllr Mrs Rachel Leech	VICE CHAIR	rachelleech67@btinternet.com
Cllr Tony Alston		tonyalston@hotmail.com
Cllr Barry Lacey		sally.lacey@btconnect.com
Cllr Mrs Elizabeth Aldred		aldred.sons@gmail.com
Cllr Nigel Lingard		nigel.lingard@hotmail.co.uk
Cllr Lizzie Drury		equine.nutrition1972@gmail.com
Cllr Kaylee van Zyl		mrandmrskvanzyl@gmail.com
Cllr Mrs June Weir		juneweir1@hotmail.com
Parish Clerk: Mrs Lynne Cockerton		lynne.cockerton@btopenworld.com
County & District Councillor : Cllr Andrew Stringer		Andrew.Stringer@midsuffolk.gov.uk
Stowmarket Safer Neighbourhood Team		Stowmarket.snt@suffolk.pnn.police.uk
		01449 766231
		01728 860273
		01728 860482
		01449 766918
		07470 513211
		01728 862001
		01449 780339
		101 (non emer- gency calls only)



MOT testing in Wetheringsett at MPA

**All cars and light vans up to 3T
Testing by appointment**

Ring Michael to book your test

Tel: 01449 767070

**Classic car restoration,
service and repair.**



Email: mpaclassics@hotmail.com
Tel: 01449 767070

**Unit 2, Old Station Yard, Station Road, Wetheringsett, IP14 5QJ
Next door to Mid Suffolk Light Railway Museum**